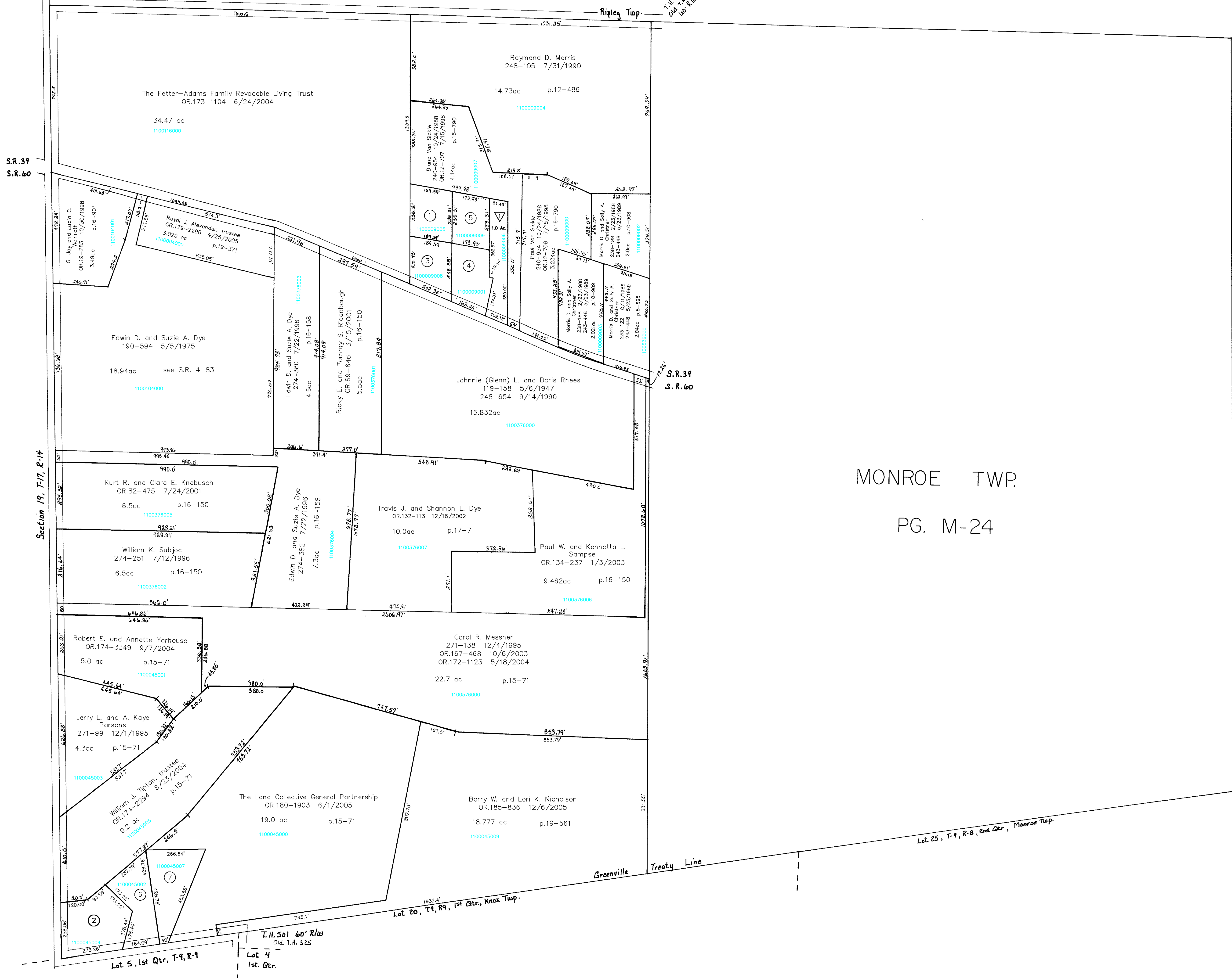


T.H. 501 60' R/W
Ord. T.R. 325

T.H. 501
60' R/W
Ord. T.R. 325



MONROE TWP.
PG. M-24

Lot 25, T-9, R-8, End Qtr., Monroe Twp.

Greenville Treaty Line

Lot 20, T-9, R-9, 1st Qtr., Knox Twp.

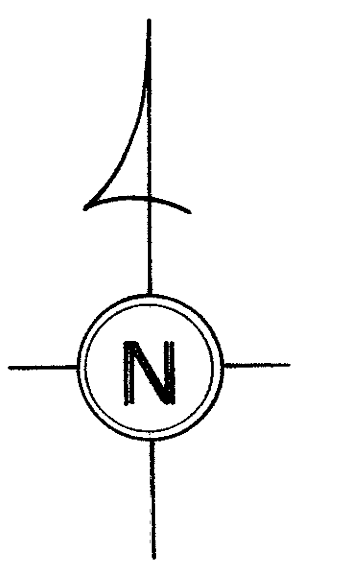
T.H. 501 60' R/W
Ord. T.R. 325

Lot 5, 1st Qtr., T-9, R-9

Lot 4
1st Qtr.

Hillside Subdivision
Plat 18-516 Platted 2/7/2003
1100009006 BYLER D & D CONSTRUCTION, INC.
OR 0138-114 2/18/2003
1.0 ac

- 1100009005 ① CARDER THOMAS
285-698 8/26/1994
1.0 ac p.14-587
- 1100045004 ② STRICKLAND SHIRLEY A.
OR 0168-540 11/13/2003
1.75 ac p.18-536
- 1100009008 ③ CARDER THOMAS L. AND JESSICA J.
OR 0027-669 3/10/1999
1.0 ac p.14-587
- 1100009001 ④ CARDER NOLA F.
237-385 12/11/1987
1.083 ac p.10-873
- 1100009009 ⑤ CARDER THOMAS L.
OR 0119-78 7/30/2002
0.917 ac p.18-344
- 1100045002 ⑥ CHRISTOPHEL VICKY
DUNCAN JUANITA D.
OR 0146-330 2/28/2003
1.25 ac p.18-536
- 1100045007 ⑦ Vicky Christophel and Juanita D. Duncan
OR 184-2820 11/15/2005
1.482 ac p.19-544



KNOX TWP.
T-17, R-14
Section 20
SCALE 1"=200'
Last Revision: 12/6/2005

LET IT BE KNOWN, THIS MAP HAS BEEN PREPARED AS A REFERENCE GUIDE TO PROPERTY OWNERSHIP. WE BELIEVE THIS INFORMATION TO BE CORRECT AND CURRENT, HOWEVER, IT IS NOT INTENDED FOR ANY LEGAL USE, WHETHER IT BE IN SALES, TRANSFERS, TRADES, LEASES OF ANY TYPE, ETC., AND DO NOT ACCEPT RESPONSIBILITY FOR ERRORS OF ANY NATURE OR OMISSIONS CONTAINED HEREIN.

KX-37