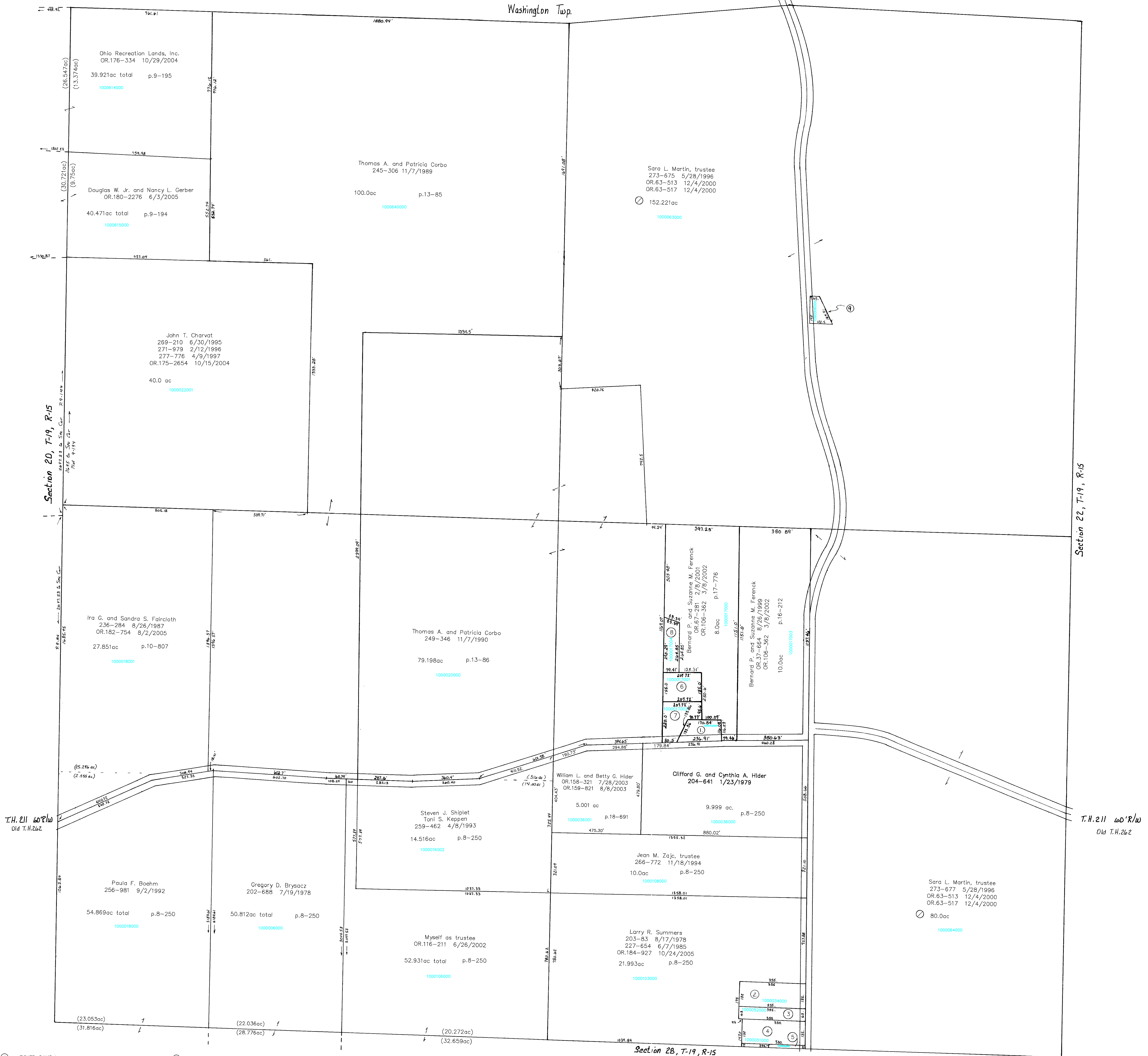


C.H.22 60'R/W

Washington Twp



Section 20, T-19, R-15

Section 22, T-19, R-15

T.H.211 60'R/W

T.H.211 60'R/W

Section 28, T-19, R-15

C.H.22 60'R/W

- 1000102000 ① FISHER, DAVID L.
KEENE, CAROLYN J.
274-955 8/27/1996
0.55 ac p.16-204
- 1000034000 ② HENDERSON JOHNNY AND BARBARA
179-822 3/20/1972
1.075 ac p.3-58
- 1000052000 ③ Ruth A. Hurst and Dennis K. Bean
OR.180-3366 6/17/2005
0.513 ac p.3-58
- 1000051000 ④ Ruth A. Hurst and Dennis K. Bean
OR.180-3366 6/17/2005
1.0 ac
- 1000050000 ⑤ Ruth A. Hurst and Dennis K. Bean
OR.180-3366 6/17/2005
0.113 ac
- 1000017001 ⑥ TYSER DANIEL E. AND WENDY L.
OR.0172-2625 6/2/2004
0.739 ac p.14-959
- 1000017002 ⑦ TYSER DANIEL E. AND WENDY L.
OR.0172-2625 6/2/2004
0.761 ac p.14-960
- 1000017004 ⑧ TYSER DANIEL E. AND WENDY L.
OR.0172-2625 6/2/2004
0.808 ac p.17-778
- 1090006000 ⑨ HOLMES-WAYNE ELECTRIC COOPERATIVE, INC.
189-69 10/29/1974
0.279 ac p.7-349

KNOX TWP.
T-19, R-15
Section 21
SCALE 1"= 200'
Last Revision: 10/24/2005

LET IT BE KNOWN, THIS MAP HAS BEEN PREPARED AS A REFERENCE GUIDE TO PROPERTY OWNERSHIP. WE BELIEVE THIS INFORMATION TO BE CORRECT AND CURRENT. HOWEVER, IT IS NOT INTENDED FOR ANY LEGAL USE, WHETHER IT BE IN SALES, TRANSFERS, TRADES, LEASES OF ANY TYPE, ETC., AND DO NOT ACCEPT RESPONSIBILITY FOR ERRORS OF ANY NATURE OR OMISSIONS CONTAINED HEREIN.

KX-330