

T.H. 406 60' R/W
Old T.H. 211

Washington Township
Section 14, T-19, R-15

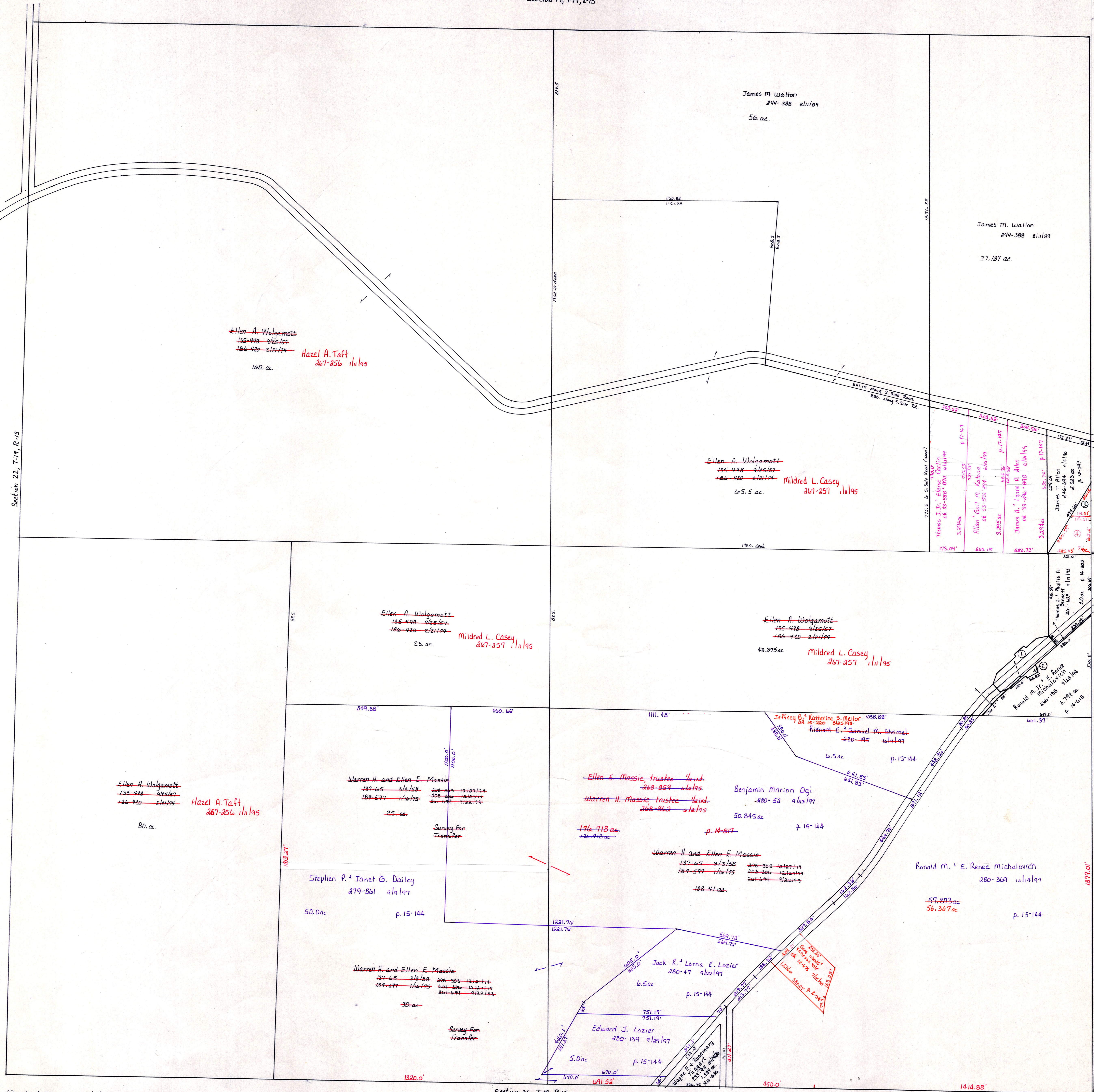
T.H. 211
Old T.H. 212
60' R/W

Section 22, T-19, R-15

T.H. 211 60' R/W
Old T.H. 212

S.R. 514

Section 24, T-19, R-15



- ① State of Ohio 260-3 s/2019 .712 ac p. 14-211
- ② State of Ohio 260-6 s/2019 .063 ac p. 14-211
- ③ Samuel & Teresa Tish OR 11-894 71.6 ac 300 p. 16-777
- ④ Wendell & Ramona K. Goughart 261-836-1010123-1075 ac S.F.T.
- ⑤ Larry L. Martin OR 10-876 110145 .77 ac p. 16-745
- Jeffery L. Martin
- Roggy S. Klingler

Section 26, T-19, R-15 S.R. 514 C.H. 50 60' R/W

KNOX TWP.
T-19, R-15
Section 23
SCALE 1" = 200'

LET IT BE KNOWN, THIS MAP HAS BEEN PREPARED AS A REFERENCE GUIDE TO PROPERTY OWNERSHIP. WE BELIEVE THIS INFORMATION TO BE CORRECT AND CURRENT, HOWEVER, IT IS NOT INTENDED FOR ANY LEGAL USE, WHETHER IT BE IN SALES, TRANSFERS, TRADES, LEASES OF ANY TYPE, ETC., AND DO NOT ACCEPT RESPONSIBILITY FOR ERRORS OF ANY NATURE OR OMISSIONS CONTAINED HEREIN.

KX-34