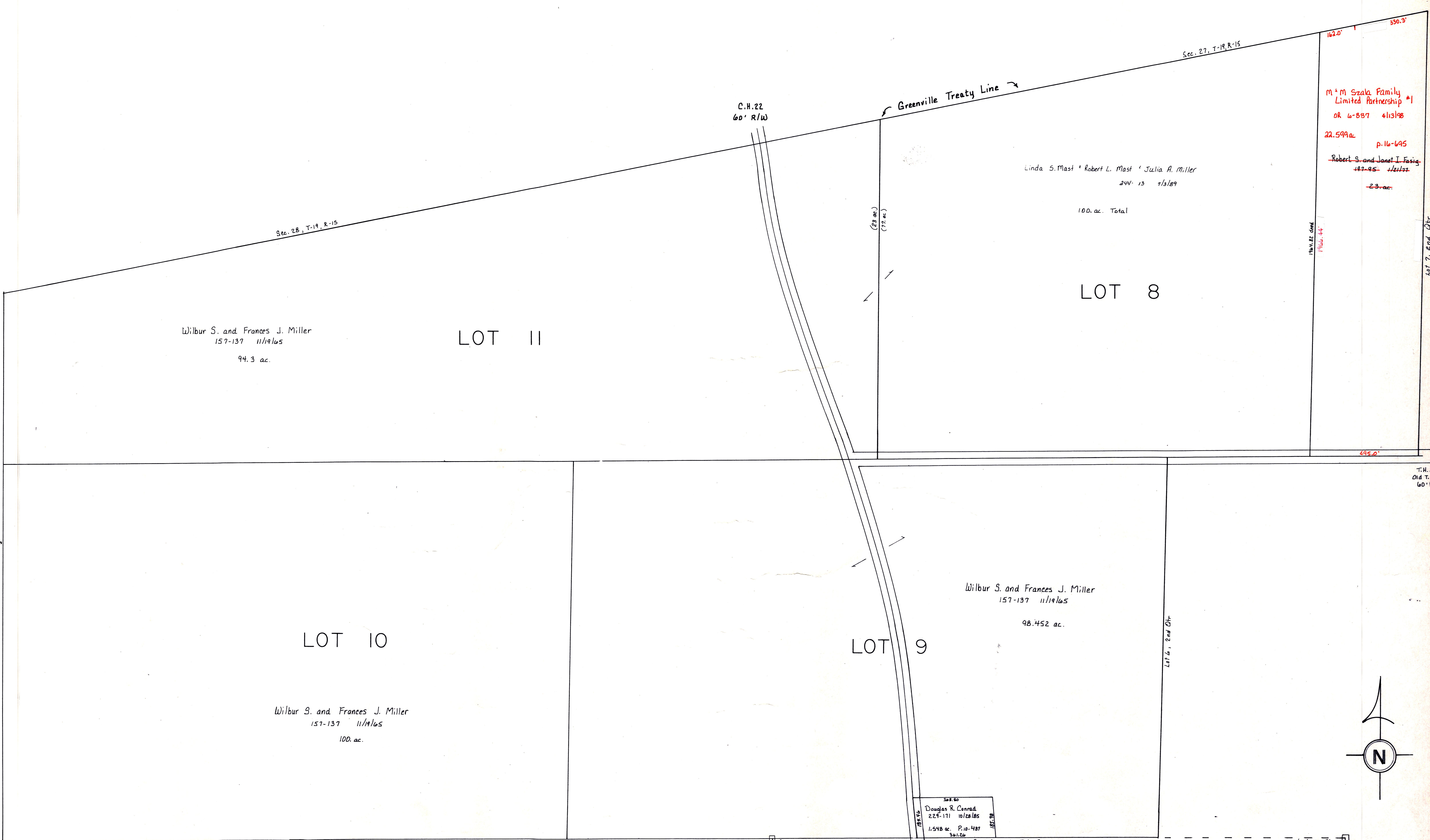


Knox County



Wilbur S. and Frances J. Miller
157-137 11/19/15
94.3 ac.

LOT II

Linda S. Mast + Robert L. Mast + Julia A. Miller
244-13 7/13/89
100 ac. Total

LOT 8

M + M Szala Family
Limited Partnership #1
OK 6-587 4/13/98
22.599 ac. p. 16-645
Robert S. and Janet I. Fasig
442-95 11/13/12
23 ac.

LOT 10

Wilbur S. and Frances J. Miller
157-137 11/19/15
100 ac.

LOT 9

Wilbur S. and Frances J. Miller
157-137 11/19/15
98.452 ac.

Douglas R. Conrad
224-171 10/22/15
1.548 ac. P. 10-487
11/13/12

KNOX TWP.
T-9, R-9
2nd Qtr.
Lots 8, 9, 10, 11
SCALE 1" = 200'

LET IT BE KNOWN, THIS MAP HAS BEEN PREPARED AS A REFERENCE GUIDE TO PROPERTY OWNERSHIP. WE BELIEVE THIS INFORMATION TO BE CORRECT AND CURRENT, HOWEVER, IT IS NOT INTENDED FOR ANY LEGAL USE, WHETHER IT BE IN SALES, TRANSFERS, TRADES, LEASES OF ANY TYPE, ETC., AND DO NOT ACCEPT RESPONSIBILITY FOR ERRORS OF ANY NATURE OR OMISSIONS CONTAINED HEREIN.

KX-4