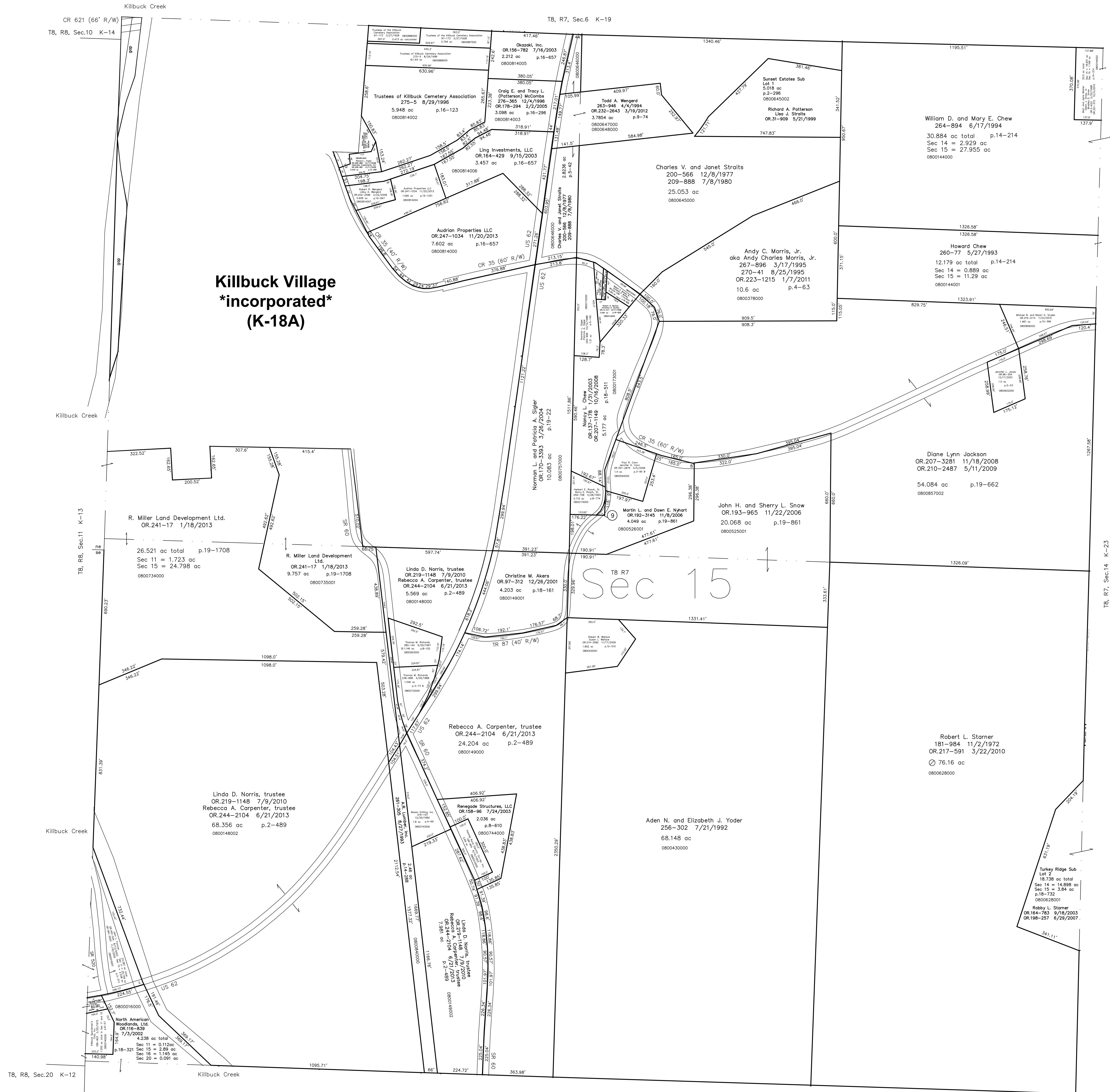


0800173000 Nancy L. Chew
OR.133-178 1/31/2003
OR.207-1149 10/16/2008
0.029 ac p.18-511

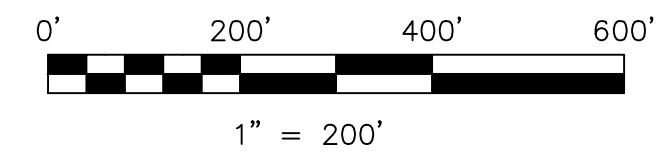


**Killbuck Village
incorporated
(K-18A)**

Sec 15

Sunset Estates Subdivision
Plat 2-296 Platted 5/20/1999

Turkey Ridge Subdivision Replat of Lot 1 and Additional Land
Plat 18-732 Platted 9/16/2003



LET IT BE KNOWN, THIS MAP HAS BEEN PREPARED AS A REFERENCE
GUIDE TO PROPERTY OWNERSHIP. WE BELIEVE THIS INFORMATION TO
BE CORRECT AND CURRENT. HOWEVER IT IS NOT INTENDED FOR ANY
LEGAL USE, WHETHER IT BE IN SALES, TRANSFERS, TRADED, LEASES
OF ANY TYPE, ETC., AND DO NOT ACCEPT RESPONSIBILITY FOR
ERRORS OF ANY NATURE OR OMISSIONS CONTAINED HEREIN.

new survey required
for next transfer

Last Revision: 11/20/2013

**T-8, R-7, Sec.15
Killbuck Twp.
Holmes County, Ohio**

K-18