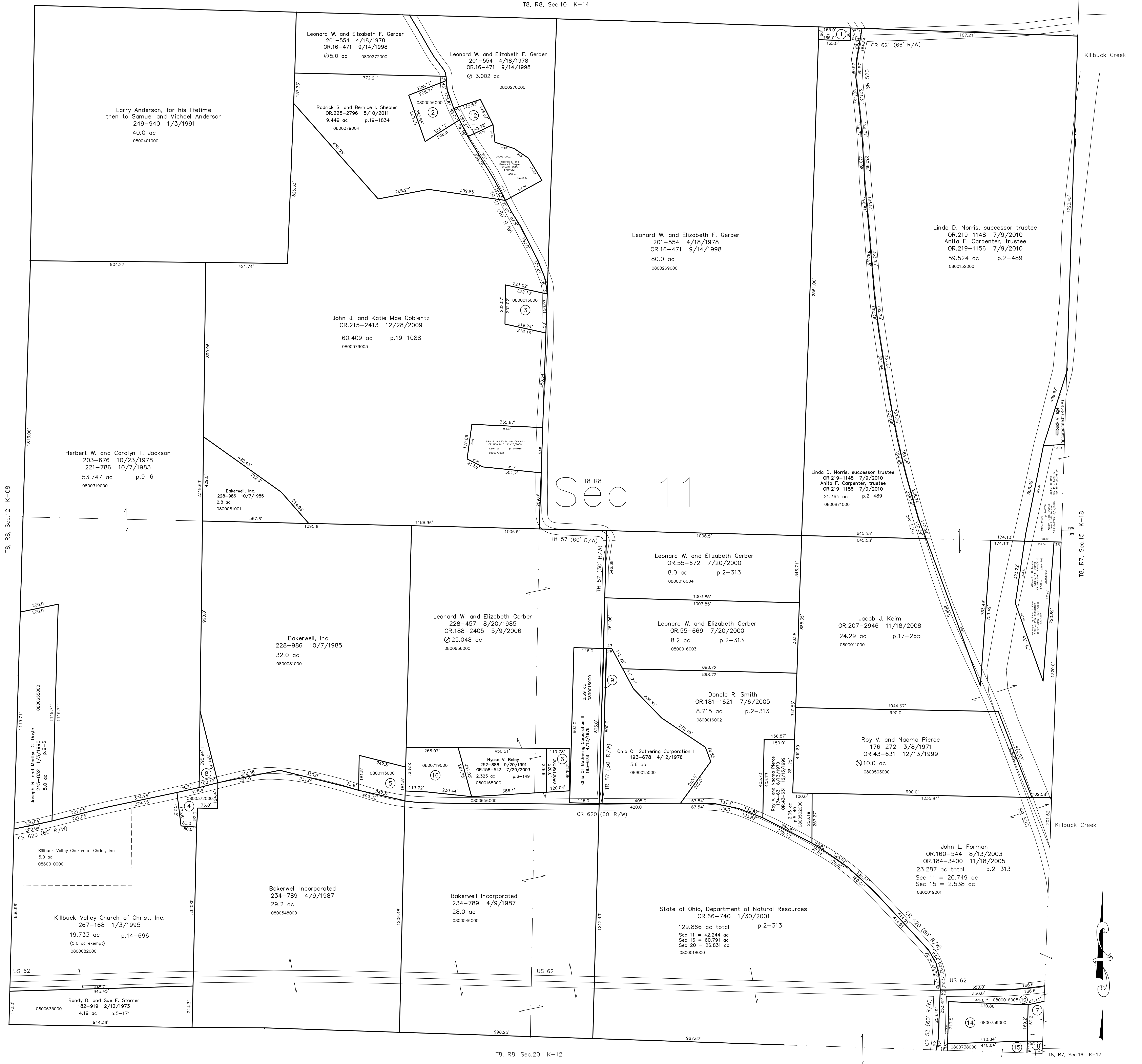
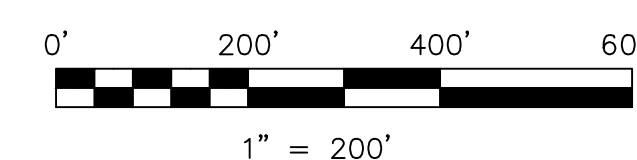


- 0800026000 ① Joseph A. Arbogast  
OR.14-922 8/18/1988  
OR.35-269 9/7/1999  
0.025 ac
- 0800566000 ② Rodrick S. and Bernice I. Shepler  
OR.65-163 3/9/2001  
1.068 ac p.8-514
- 0800013000 ③ Bradley S. Carpenter  
OR.97-603 12/27/2001  
1.0 ac p.8-83
- 0800372000 ④ Eleanor M. Madison  
180-718 7/3/1972  
0.591 ac
- 0800150000 ⑤ Cheryl L. Rutherford and Daniel D. Long  
OR.47-728 2/24/2000  
0.10 ac
- 0800166000 ⑥ Rex D. and Sharon F. Chaney  
200-39 10/14/1977  
0.612 ac p.6-149
- 0800740000 ⑦ Killbuck Sportsmen's Club, Inc.  
189-903 2/25/1975  
1.055 ac total in Sec 11 and 15 p.6-57
- 0800319001 ⑧ Bakerwell, Inc.  
237-641 12/30/1987  
0.439 ac p.10-888
- 0800016001 ⑨ Ohio Oil Gathering Corporation II  
OR.56-217 8/1/2000  
0.276 ac p.17-293
- 0800016005 ⑩ Killbuck Sportsmen's Club, Inc.  
OR.116-836 7/3/2002  
1.179 ac p.18-321
- 0800016000 ⑪ North American Woodlands, Ltd.  
OR.116-839 7/3/2002  
0.112 ac p.18-321
- 0800270001 ⑫ Rodrick S. and Bernice I. Shepler  
OR.108-1055 7/13/2007  
0.51 ac p.19-1080
- 0000000000 ⑬ not used
- 0800739000 ⑭ Killbuck Sportsmen's Club, Inc.  
157-545 2/14/1986  
1.64 ac p.4-82
- 0800738000 ⑮ Killbuck Sportsmen's Club, Inc.  
157-545 2/14/1986  
1.18 ac total in Sec 11 and 20 p.4-82
- 0800719000 ⑯ Den V. Yeat  
OR.206-1741 8/29/2008  
1.844 ac p.6-149



Last Revision: 5/10/2011  
**T-8, R-8, Sec.11**  
**Killbuck Twp.**  
**Holmes County, Ohio**



LET IT BE KNOWN, THIS MAP HAS BEEN PREPARED AS A REFERENCE GUIDE TO PROPERTY OWNERSHIP. WE BELIEVE THIS INFORMATION TO BE CORRECT AND CURRENT. HOWEVER IT IS NOT INTENDED FOR ANY LEGAL USE, WHETHER IT BE IN SALES, TRANSFERS, TRADED, LEASES OF ANY TYPE, ETC., AND DO NOT ACCEPT RESPONSIBILITY FOR ERRORS OF ANY NATURE OR OMISSIONS CONTAINED HEREIN.

new survey required for next transfer

# K-13