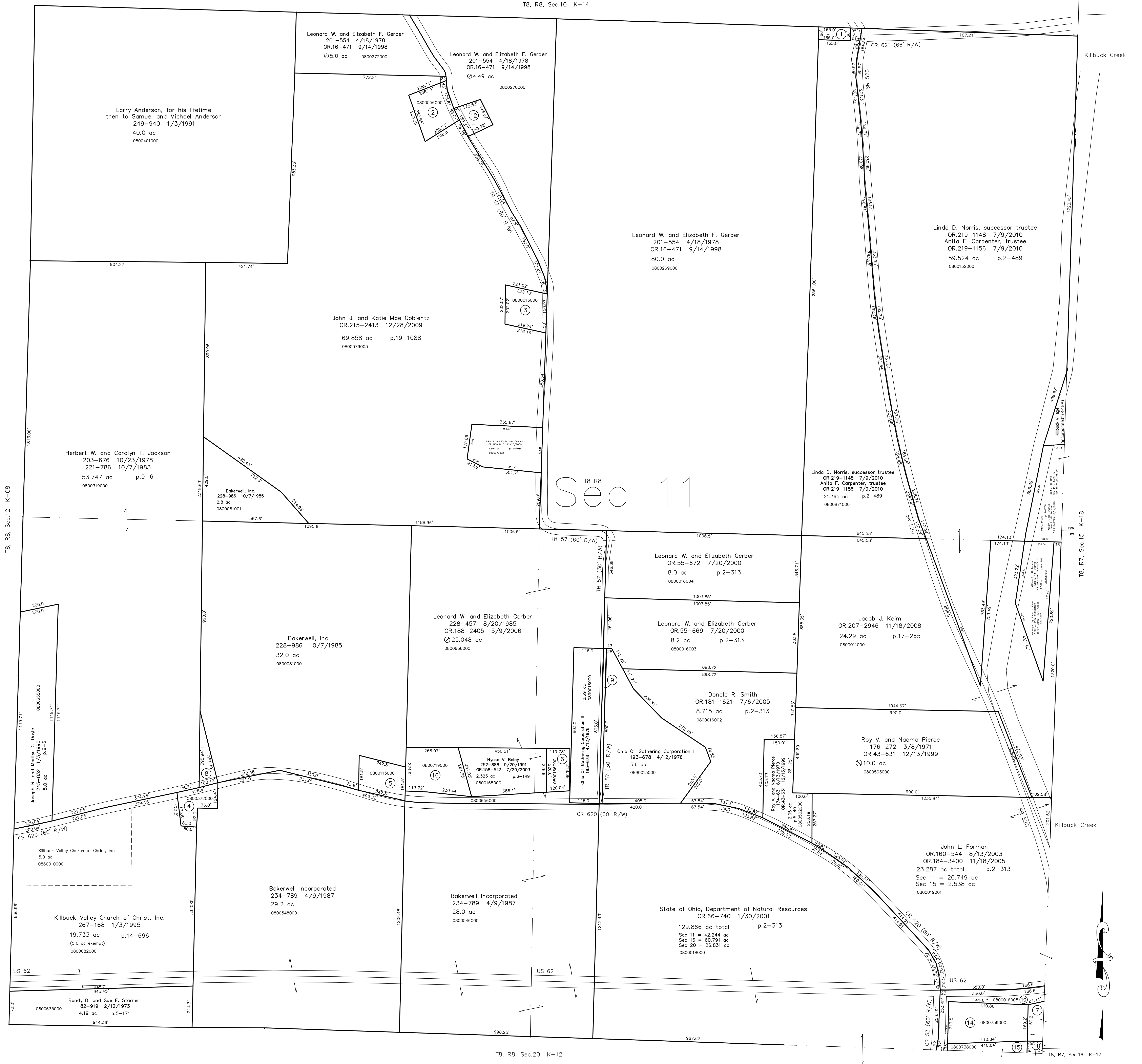
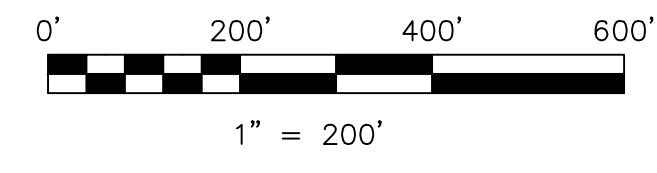


- 0800026000 ① Joseph A. Arbogast
OR.14-922 8/18/1988
OR.35-269 9/7/1999
0.025 ac
- 0800560000 ② Rodrick S. and Bernice I. Shepler
OR.65-163 3/9/2001
1.068 ac p.8-514
- 0800013000 ③ Bradley S. Carpenter
OR.97-603 12/27/2001
1.0 ac p.8-83
- 0800372000 ④ Eleanor M. Madison
180-718 7/3/1972
0.591 ac
- 0800150000 ⑤ Cheryl L. Rutherford and Daniel D. Long
OR.47-728 2/24/2000
0.10 ac
- 0800166000 ⑥ Rex D. and Sharon F. Chaney
200-39 10/14/1977
0.612 ac p.6-149
- 0800740000 ⑦ Killbuck Sportsmen's Club, Inc.
189-903 2/25/1975
1.055 ac total in Sec 11 and 15 p.6-57
- 0800319001 ⑧ Bakerwell, Inc.
237-641 12/30/1987
0.439 ac p.10-888
- 0800016001 ⑨ Ohio Oil Gathering Corporation II
OR.56-217 8/1/2000
0.276 ac p.17-293
- 0800016005 ⑩ Killbuck Sportsmen's Club, Inc.
OR.116-836 7/3/2002
1.179 ac p.18-321
- 0800016000 ⑪ North American Woodlands, Ltd.
OR.116-839 7/3/2002
0.112 ac p.18-321
- 0800270001 ⑫ Rodrick S. and Bernice I. Shepler
OR.108-1055 7/13/2007
0.51 ac p.19-1080
- 0000000000 ⑬ not used
- 0800739000 ⑭ Killbuck Sportsmen's Club, Inc.
157-545 2/14/1986
1.64 ac p.4-82
- 0800738000 ⑮ Killbuck Sportsmen's Club, Inc.
157-545 2/14/1986
1.18 ac total in Sec 11 and 20 p.4-82
- 0800719000 ⑯ Den V. Yost
OR.206-1741 8/29/2008
1.844 ac p.6-149



Sec 11

Last Revision: 7/9/2010
T-8, R-8, Sec.11
Killbuck Twp.
Holmes County, Ohio



LET IT BE KNOWN, THIS MAP HAS BEEN PREPARED AS A REFERENCE GUIDE TO PROPERTY OWNERSHIP. WE BELIEVE THIS INFORMATION TO BE CORRECT AND CURRENT. HOWEVER IT IS NOT INTENDED FOR ANY LEGAL USE, WHETHER IT BE IN SALES, TRANSFERS, TRUSTS, LEASES OF ANY TYPE, ETC., AND DO NOT ACCEPT RESPONSIBILITY FOR ERRORS OF ANY NATURE OR OMISSIONS CONTAINED HEREIN.

new survey required for next transfer

K-13