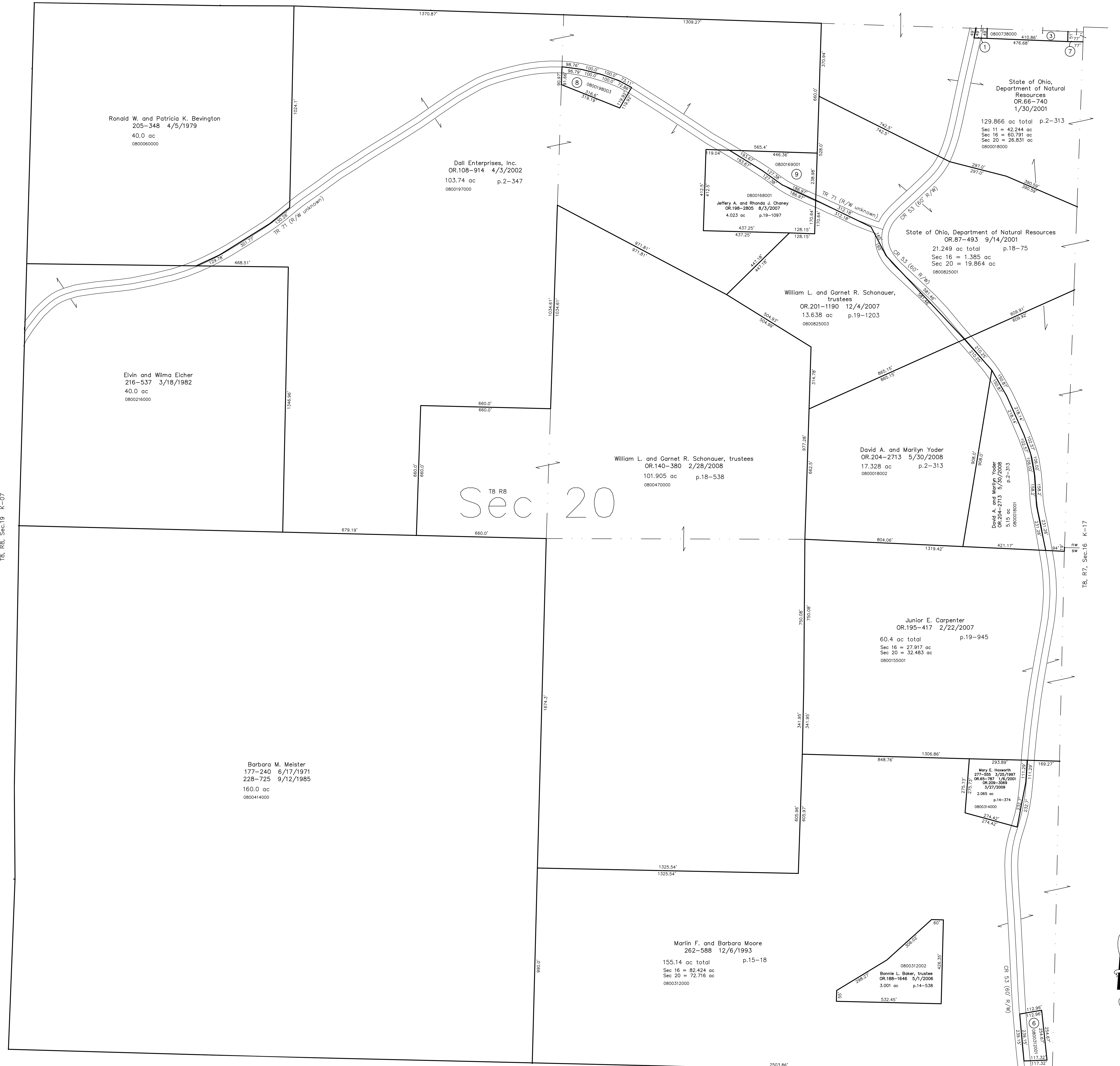


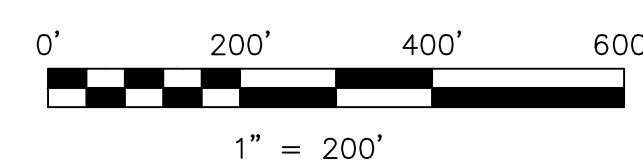
- 0800016005 ① Killbuck Sportsmen's Club, Inc.
OR.116-836 7/3/2002
0.071 ac p.18-321
- 0000000000 ② not used
- 0800738000 ③ Killbuck Sportsmen's Club, Inc.
157-545 2/14/1966
1.18 ac total in Sec 11 and 20 p.4-82
- 0000000000 ④ not used
- 0000000000 ⑤ not used
- 0800312001 ⑥ Jack Dale VanSickle
OR.101-715 1/31/2002
0.851 ac p.14-374
- 0800016000 ⑦ North American Woodlands, Ltd.
OR.116-839 7/3/2002
0.091 ac p.18-321
- 0800198003 ⑧ Michael J. Giffin
OR.88-649 9/26/2001
0.9135 ac p.12-796
- 0800169001 ⑨ Terry G. Chaney
OR.203-1396 3/21/2008
1.309 ac p.19-1097

T8, R8, Sec.19 K-07



T8, R7, Sec.16 K-17

Last Revision: 3/27/2009
T-8, R-8, Sec.20
Killbuck Twp.
Holmes County, Ohio



LET IT BE KNOWN, THIS MAP HAS BEEN PREPARED AS A REFERENCE GUIDE TO PROPERTY OWNERSHIP. WE BELIEVE THIS INFORMATION TO BE CORRECT AND CURRENT. HOWEVER IT IS NOT INTENDED FOR ANY LEGAL USE, WHETHER IT BE IN SALES, TRANSFERS, TRADES, LEASES OF ANY TYPE, ETC., AND DO NOT ACCEPT RESPONSIBILITY FOR ERRORS OF ANY NATURE OR OMISSIONS CONTAINED HEREIN.

⊙ new survey required for next transfer

K-12