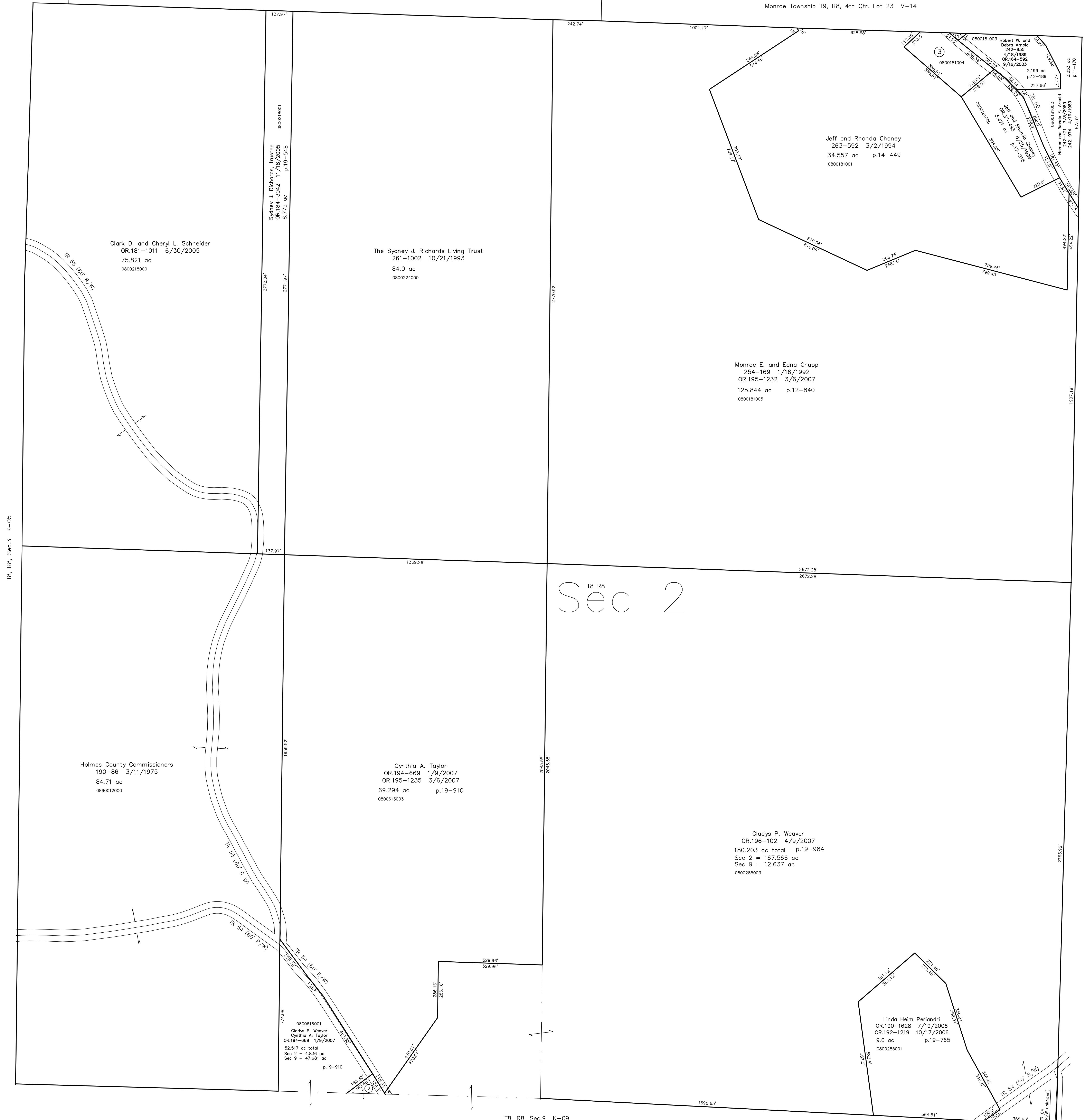


- 0800181002 ① Jason and Melissa Brooks
OR.204-2611 5/28/2008
0.039 ac p.12-198
- 0800613001 ② Robert Arnold
272-680 3/21/1996
0.29 ac p.16-51
- 0800181004 ③ Arlen J. and Lorraine J. Rober
OR.212-1783 8/23/2009
1.766 ac p.12-307



T8, R8, Sec.3 K-05

T8, R8, Sec.1 K-15

T8 R8
Sec 2

Clark D. and Cheryl L. Schneider
OR.181-1011 6/30/2005
75.821 ac
0800218000

The Sydney J. Richards Living Trust
261-1002 10/21/1993
84.0 ac
0800224000

Jeff and Rhonda Chaney
263-592 3/2/1994
34.557 ac p.14-449
0800181001

Monroe E. and Edna Chupp
254-169 1/16/1992
OR.195-1232 3/6/2007
125.844 ac p.12-840
0800181005

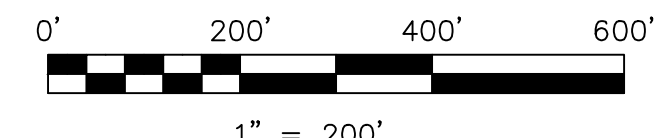
Holmes County Commissioners
190-86 3/11/1975
84.71 ac
080012000

Cynthia A. Taylor
OR.194-669 1/9/2007
OR.195-1235 3/6/2007
69.294 ac p.19-910
0800613003

Cladye P. Weaver
OR.196-102 4/9/2007
180.203 ac total p.19-984
Sec 2 = 167.566 ac
Sec 9 = 12.637 ac
0800285003

Linda Heim Periandri
OR.190-1628 7/19/2006
OR.192-1219 10/17/2006
9.0 ac p.19-765
0800285001

T8, R8, Sec.9 K-09



LET IT BE KNOWN, THIS MAP HAS BEEN PREPARED AS A REFERENCE
GUIDE TO PROPERTY OWNERSHIP. WE BELIEVE THIS INFORMATION TO
BE CORRECT AND CURRENT. HOWEVER IT IS NOT INTENDED FOR ANY
LEGAL USE, WHETHER IT BE IN SALES, TRANSFERS, TRADED, LEASES
OF ANY TYPE, ETC., AND DO NOT ACCEPT RESPONSIBILITY FOR
ERRORS OF ANY NATURE OR OMISSIONS CONTAINED HEREIN.

⊙ new survey required
for next transfer

Last Revision: 8/3/2009
T-8, R-8, Sec.21
Killbuck Twp.
Holmes County, Ohio

K-10