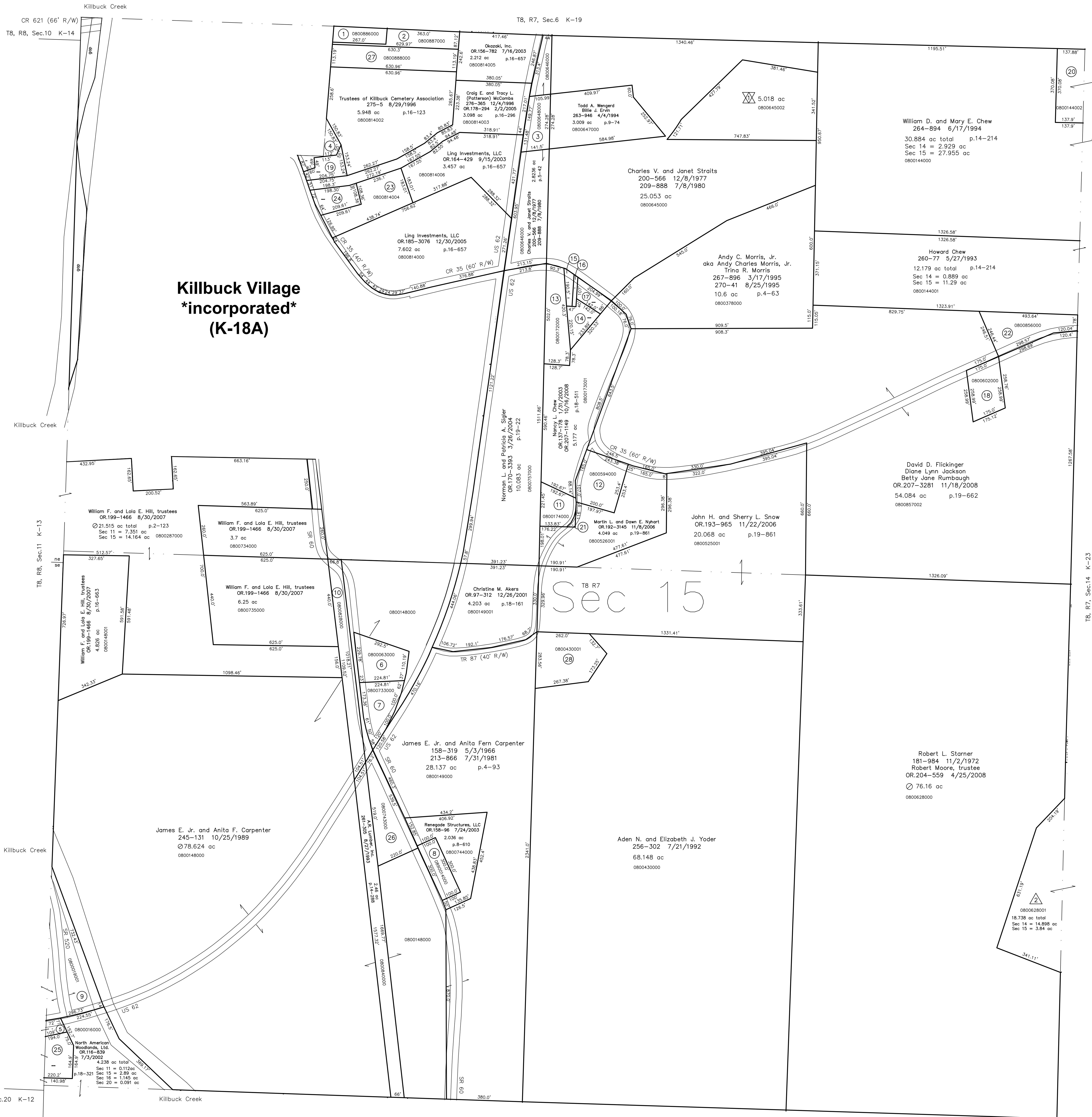


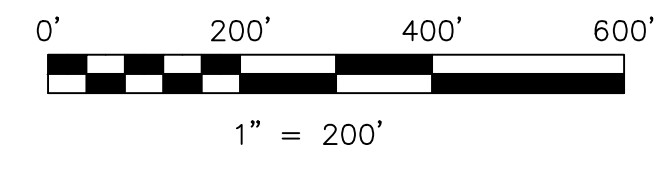
- 0800866000 ① Trustees of the Killbuck Cemetery Association
97-173 3/27/1929
0.473 ac calculated
- 0800870000 ② Trustees of the Killbuck Cemetery Association
97-173 3/27/1928
0.794 ac
- 0800648000 ③ Todd A. Wengert and Billie J. Ervin
263-946 4/4/1994
0.7764 ac p.9-74
- 0800813000 ④ Richard L. Fowler and Clearview Investments, Ltd.
OR.208-892 12/17/2008
0.343 ac p.10-209
- 0800016005 ⑤ Killbuck Sportmen's Club, Inc.
OR.116-836 7/23/2002
0.16 ac p.18-321
- 0800063000 ⑥ Thomas M. Richards
280-144 9/29/1997
0.1146 ac p.8-102
- 0800733000 ⑦ Thomas M. Richards
238-898 4/29/1988
1.046 ac p.8-102
- 0890014000 ⑧ Holmes Rural Electric Co-op, Inc.
128-464 9/14/1953
0.69 ac
- 0800019001 ⑨ John L. Forman
OR.180-344 8/13/2003
OR.184-340 11/18/2005
2.538 ac p.2-313
- 0800828000 ⑩ William F. and Lola E. Hill, trustees
OR.199-1466 8/30/2007
1.612 ac p.10-314
- 0800174000 ⑪ Herbert E. Roach, Sr. and Barry E. Roach, Sr.
259-708 4/28/1993
0.715 ac p.8-774
- 0800594000 ⑫ Paul R. and Jennifer O. Conn
OR.187-2875 4/5/2006
1.4 ac p.3-95 B
- 0800172000 ⑬ Norman L. and Patricia A. Sigler
227-839 7/1/1985
227-842 7/1/1985
240-806 10/12/1988
1.31 ac p.8-145
- 0800123000 ⑭ Robert D. and Christine D. Burkey
OR.14-617 8/17/1998
0.491 ac p.16-826
- 0800748000 ⑮ Norman L. Sigler
OR.61-436 10/31/2000
0.157 ac p.8-192
- 0800747000 ⑯ Norman L. Sigler
OR.61-436 10/31/2000
0.07 ac p.8-192
- 0800122000 ⑰ John W. Burkey
OR.205-634 6/17/2008
0.355 ac p.16-826
- 0800602000 ⑱ Jennifer L. Jones
OR.86-354 12/17/2007
1.0 ac p.5-53
- 0800814001 ⑲ Richard L. Fowler
OR.208-882 12/17/2008
Clearview Investments, Ltd.
OR.208-887 12/17/2008
0.442 ac p.12-280
- 0800144002 ⑳ Bart and Janis Mohler
Glenn J. Snow, Jr.
Bradley D. and Michele M. Snow
OR.3-422 2/20/1998
1.169 ac p.14-214
- 0800173000 ㉑ Nancy L. Chew
OR.137-178 1/31/2003
OR.207-1149 10/16/2008
0.029 ac p.18-511
- 0800856000 ㉒ Kristin Smith
OR.171-421 4/1/2004
OR.203-2526 4/3/2008
1.487 ac p.10-396
- 0800814004 ㉓ Ling Investments, LLC
OR.208-394 12/9/2008
1.595 ac p.19-1251
- 0800814007 ㉔ Robert R. and Libby A. Wengert
OR.202-2596 2/22/2008
0.856 ac p.19-847
- 0800740000 ㉕ Killbuck Sportmen's Club, Inc.
189-903 2/25/1975
1.055 ac total in Sec 11 and 15 p.6-57
- 0800743000 ㉖ Mason Drilling, Inc.
219-143 12/29/1982
1.8 ac p.4-69
- 0800888000 ㉗ Trustees of Killbuck Cemetery Association
275-5 8/29/1996
0.164 ac
- 0800430001 ㉘ Robert B. and Susan L. Wallace
248-531 8/31/1990
1.852 ac p.12-510



**Killbuck Village
incorporated
(K-18A)**

Sec 15

- ☒ Sunset Estates Subdivision
Plat 2-296 Platted 5/20/1999
- 0800645002 ☒ Richard A. Patterson and Lisa J. Straits
OR.31-909 5/21/1999
5.018 ac p.2-296
- △ Turkey Ridge Subdivision
Replat of Lot 1 and Additional Land
Plat 18-732 Platted 9/16/2003
- 0800628001 △ Robby L. Starnier
OR.164-783 9/18/2003
OR.198-257 6/29/2007
18.738 ac total p.18-732



LET IT BE KNOWN THIS MAP HAS BEEN PREPARED AS A REFERENCE GUIDE TO PROPERTY OWNERSHIP. WE BELIEVE THIS INFORMATION TO BE CORRECT AND CURRENT. HOWEVER IT IS NOT INTENDED FOR ANY LEGAL USE, WHETHER IT BE IN SALES, TRANSFERS, TRADED, LEASES OF ANY TYPE, ETC., AND DO NOT ACCEPT RESPONSIBILITY FOR ERRORS OF ANY NATURE OR OMISSIONS CONTAINED HEREIN.

☉ new survey required for next transfer

Last Revision: 12/17/2008
**T-8, R-7, Sec.15
Killbuck Twp.
Holmes County, Ohio**

K-18