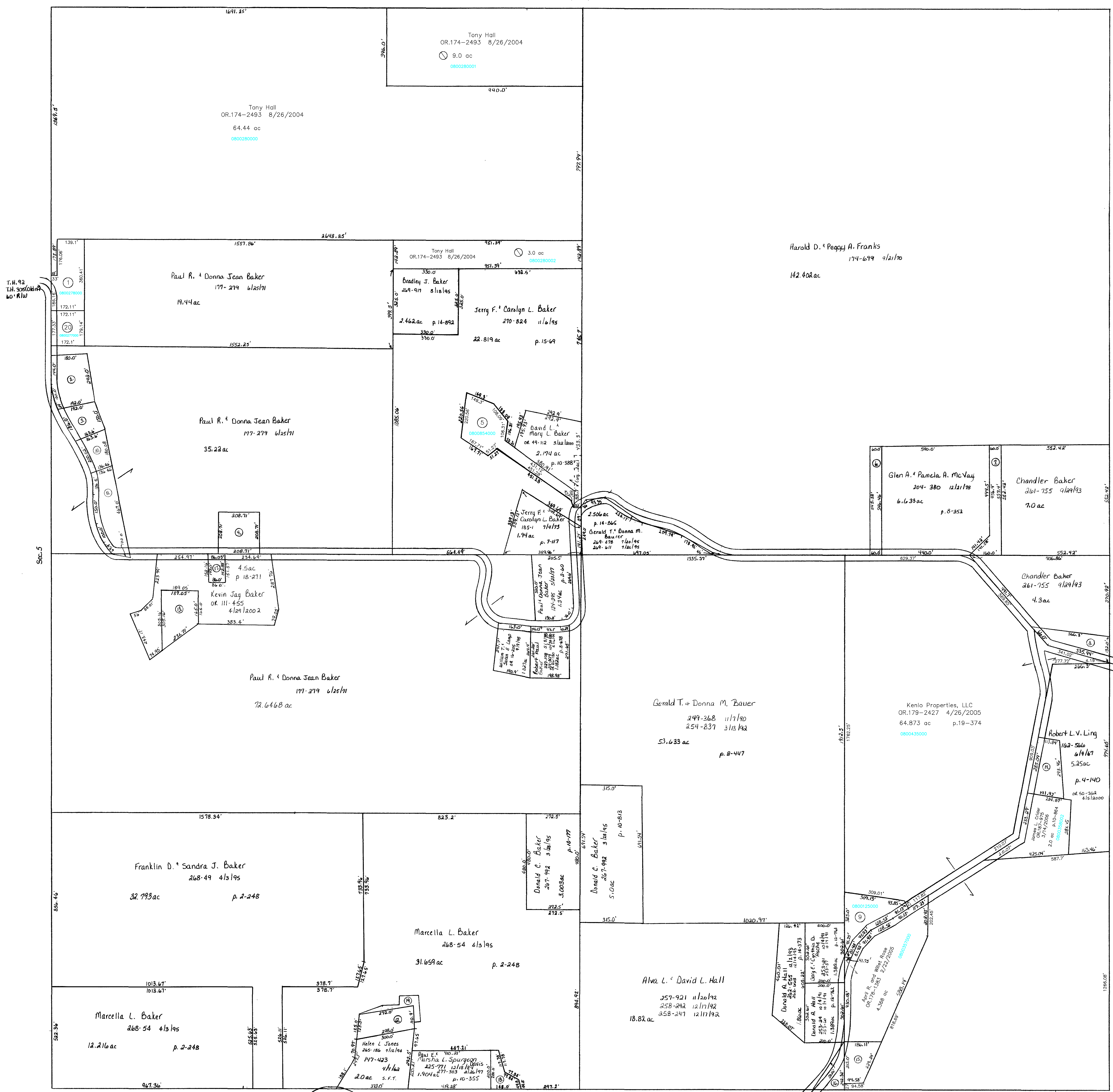


Hardy Twp.



- 0800278000 ① Thomas E. Jr. and Elizabeth M. Zellers  
OR.190-2789 8/3/2006  
1.224 ac p.19-284
- ② ROBISON CLARENCE A.  
231-184 5/16/1986  
1.1 ac p.5-1
- ③ ROBISON CLARENCE A.  
231-184 5/16/1986  
0.68 ac p.5-170
- ④ TROYER KATHY KAY  
221-568 9/6/1983  
262-661 12/13/1993  
1.0 ac p.10-188
- 0800854000 ⑤ Bradley J. Baker  
OR.184-3386 11/23/2005  
1.63 ac p.15-69
- ⑥ FRANKS HAROLD D. AND PEGGY A.  
219-522 2/14/1983  
0.752 ac p.10-97
- ⑦ MCVAY GLEN A. AND PAMELA A.  
219-520 2/14/1983  
0.887 ac p.10-97
- ⑧ ROBISON ROONEY L. AND CHRISTINA R.  
230-887 3/28/1986  
257-538 10/10/1992  
280-230 10/9/1997  
0.75 ac
- 0800125000 ⑨ David L. and Anita J. Hall  
OR.191-295 8/17/2006  
1.27 ac p.5-91
- ⑩ ROBISON WESLEY AND WANNA JEAN  
OR.0108-851 4/2/2002  
0.651 ac p.18-247
- ⑪ ROBISON WESLEY AND WANNA JEAN  
OR.0108-851 4/2/2002  
1.281 ac p.18-247
- ⑫ TRUSTEES OF THE LOCUST GROVE CHURCH  
OF CHRIST  
167-13 6/10/1968  
0.77 ac p.4-169
- ⑬ BAKER KEVIN JAY  
226-246 2/8/1985  
1.02 ac p.10-373
- ⑭ HOLMES STEVEN P.  
OR.0074-182 5/4/2001  
1.0 ac p.10-574
- ⑮ BISHOP JAMES D. AND LAURA L.  
OR.0114-774 6/7/2002  
0.682 ac p.10-748
- ⑯ BRUCE ROBERT AND PATRICIA  
240-391 9/16/1988  
0.409 ac p.13-23
- ⑰ BAKER RIDGE CEMETERY ASSOCIATION  
244-9 6/30/1988  
0.2842 ac p.12-251
- ⑱ DAVIS PAUL E. AND MARSHA L. SPURGEON  
268-52 4/3/1995  
277-303 2/28/1997  
0.388 ac p.2-248
- 0800277000 ⑲ Paul R. and Donna Jean Baker  
OR.185-2210 12/21/2005  
0.704 ac p.19-584

T-8, R-7, Sec. 4  
KILLBUCK TWP.

SCALE: 1" = 200'  
Last Revision: 8/17/2006

LET IT BE KNOWN, THIS MAP HAS BEEN PREPARED AS A REFERENCE GUIDE TO PROPERTY OWNERSHIP. WE BELIEVE THIS INFORMATION TO BE CORRECT AND CURRENT, HOWEVER, IT IS NOT INTENDED FOR ANY LEGAL USE, WHETHER IT BE IN SALES, TRANSFERS, TRADES, LEASES OF ANY TYPE, ETC., AND DO NOT ACCEPT RESPONSIBILITY FOR ERRORS OF ANY NATURE OR OMISSIONS CONTAINED HEREIN.

K-25