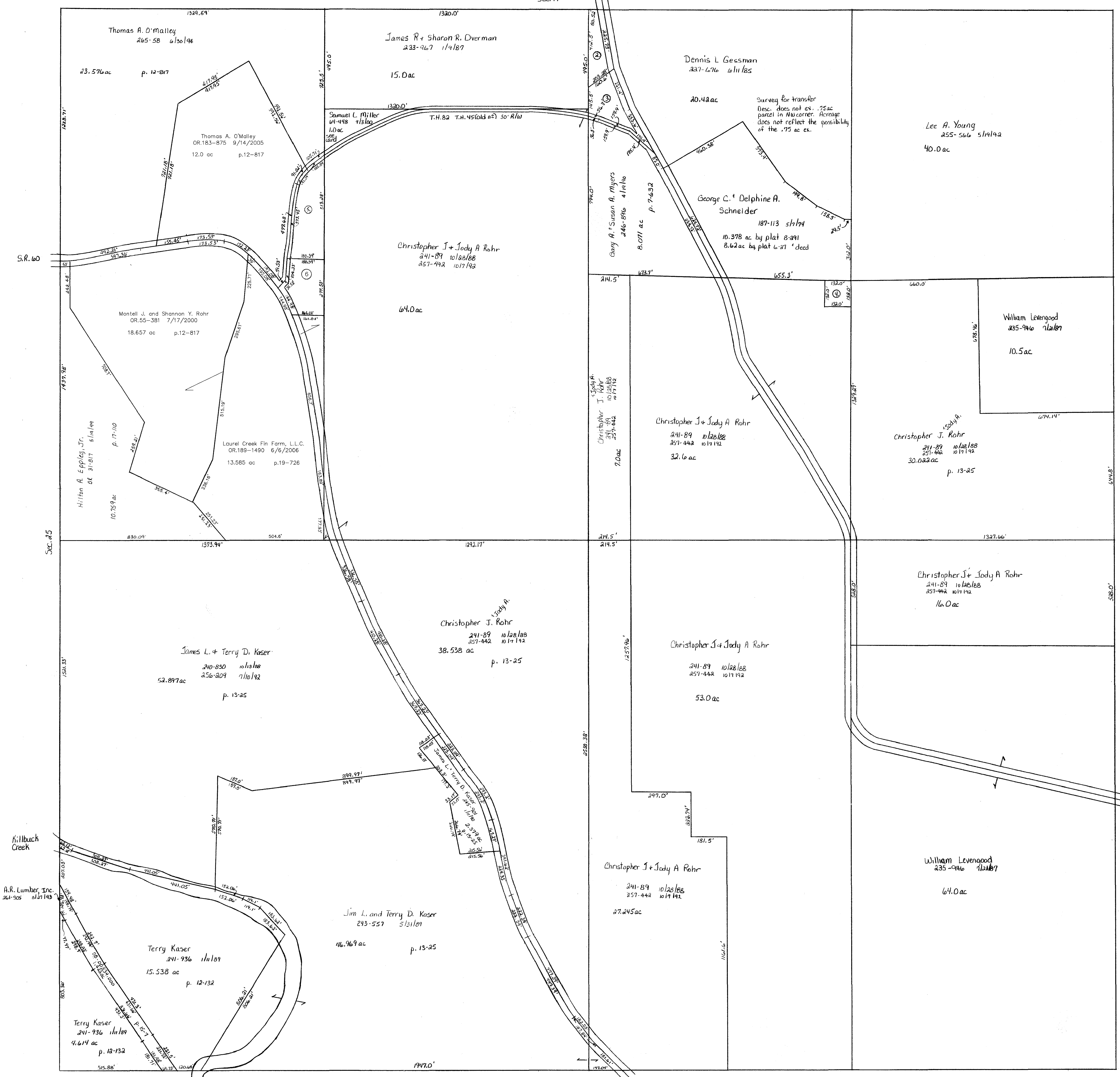


Sec. 17

T.H. 81  
T.H. 44 (old no)  
60' R/W



Sec. 23

T.H. 81  
T.H. 44 (old no)  
60' R/W

Coshacton County

- ① Not used
- ② OVERMAN JAMES R. AND SHARON R.  
233-967 1/9/1987  
0.75 ac
- ③ MYERS GARY A. AND SUSAN A.  
248-896 4/19/1990  
1.13 ac 8-5-140
- ④ SCHNEIDER GEORGE C. AND DELPHINE A.  
187-113 5/7/1974  
0.40 ac
- ⑤ CRIDDLE ERNEST AND ETHEL DIANE  
240-1 8/9/1988  
1.57 ac p.12-49
- ⑥ Florence M. Foreman  
180-845 7/14/1972  
OR.183-3389 10/13/2005  
1.237 ac p.12-392

T-8, R-7, Sec. 24  
KILLBUCK TWP.

SCALE: 1" = 200'  
Last Revision: 6/6/2006

LET IT BE KNOWN, THIS MAP HAS BEEN PREPARED AS A REFERENCE GUIDE TO PROPERTY OWNERSHIP. WE BELIEVE THIS INFORMATION TO BE CORRECT AND CURRENT, HOWEVER, IT IS NOT INTENDED FOR ANY LEGAL USE, WHETHER IT BE IN SALES, TRANSFERS, TRADES, LEASES OF ANY TYPE, ETC., AND DO NOT ACCEPT RESPONSIBILITY FOR ERRORS OF ANY NATURE OR OMISSIONS CONTAINED HEREIN.

K-21