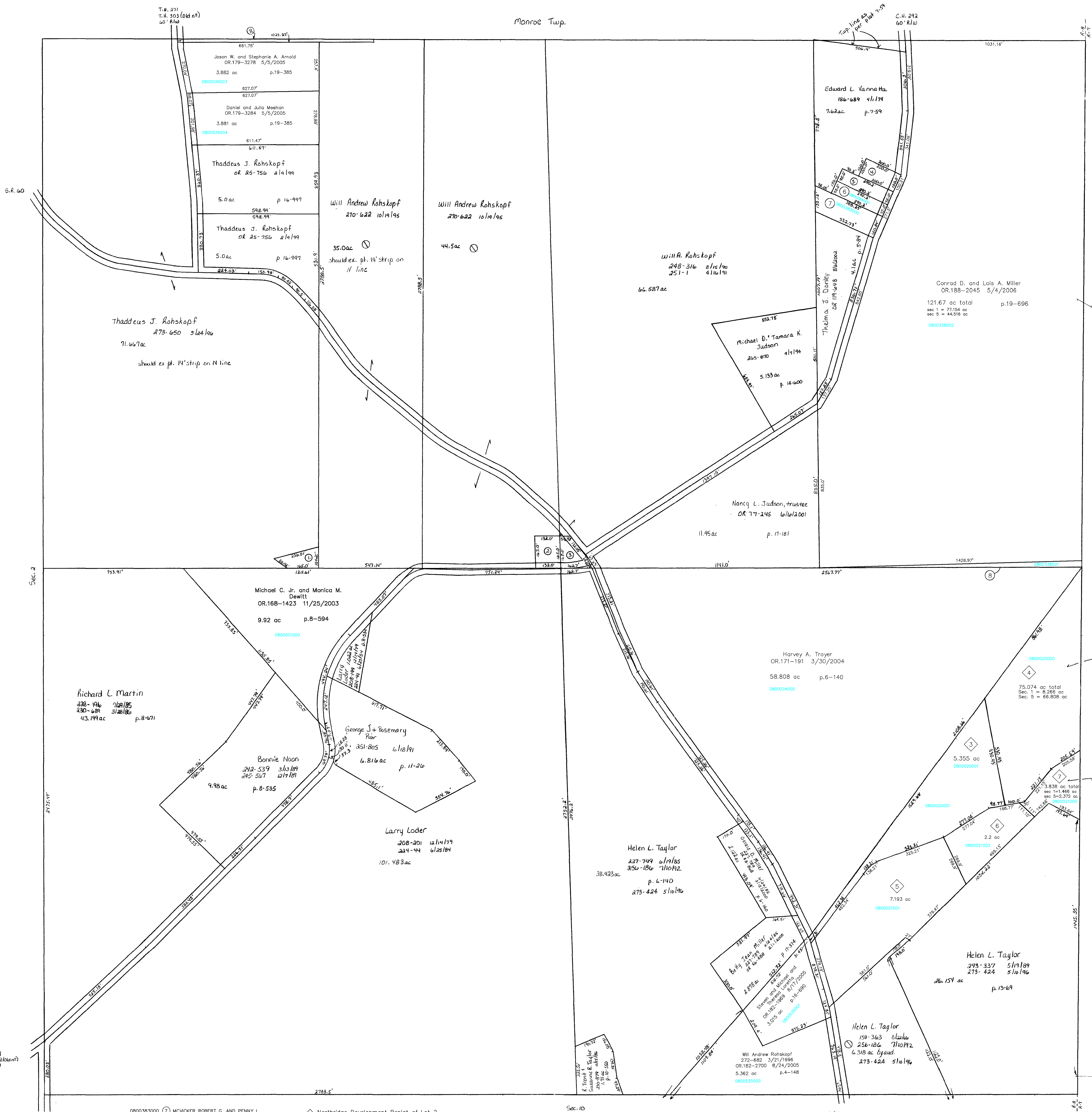


Monroe Twp.



- 0800383000 MCVICKER ROBERT G. AND PENNY L.
OR.0175-398 9/14/2004
1.0 ac p.7-210
- 0800338001 Harvey A. Troyer
OR.188-2043 5/4/2006
0.36 ac S.F.T.
- 0800210000 YODER CHRISTENA M.
238-777 4/19/1988
0.33 ac p.11-195
- 0800384000 Charles Lee and Carolyn S. Maxwell
290-5 5/25/1993
OR.175-316 9/14/2004
OR.186-621 1/17/2006
0.5 ac p.5-50

- Northridge Development Replat of Lot 2
Plat 2-269 Platted 5/5/1997
- 0800020001 Harvey A. Troyer
OR.184-2039 11/7/2005
5.355 ac
- 0800020000 Conrad D. and Lois A. Miller
OR.184-692 10/20/2005
75.074 ac total
(sect=8.266ac, sec5=66.808ac)
- Northridge Development Replat of Lot 1
Plat 2-409 Platted 11/9/2005
- 0800021001 Harvey A. Troyer
OR.184-2671 11/14/2005
7.193 ac
- 0800021002 Jerry D. and Nancy J. Halverson
OR.184-2873 11/14/2005
2.2 ac
- 0800021000 Fred A. and Alice M. Moeller
OR.184-2669 11/14/2005
3.836 ac total
(sect=1.466ac, sec5=2.372ac)

T-8, R-8, Sec. 1
KILLBUCK TWP.
SCALE: 1" = 200'
Last Revision: 5/4/2006

LET IT BE KNOWN, THIS MAP HAS BEEN PREPARED AS A REFERENCE GUIDE TO PROPERTY OWNERSHIP. WE BELIEVE THIS INFORMATION TO BE CORRECT AND CURRENT, HOWEVER, IT IS NOT INTENDED FOR ANY LEGAL USE, WHETHER IT BE IN SALES, TRANSFERS, TRADES, LEASES OF ANY TYPE, ETC., AND DO NOT ACCEPT RESPONSIBILITY FOR ERRORS OF ANY NATURE OR OMISSIONS CONTAINED HEREIN.

K-15