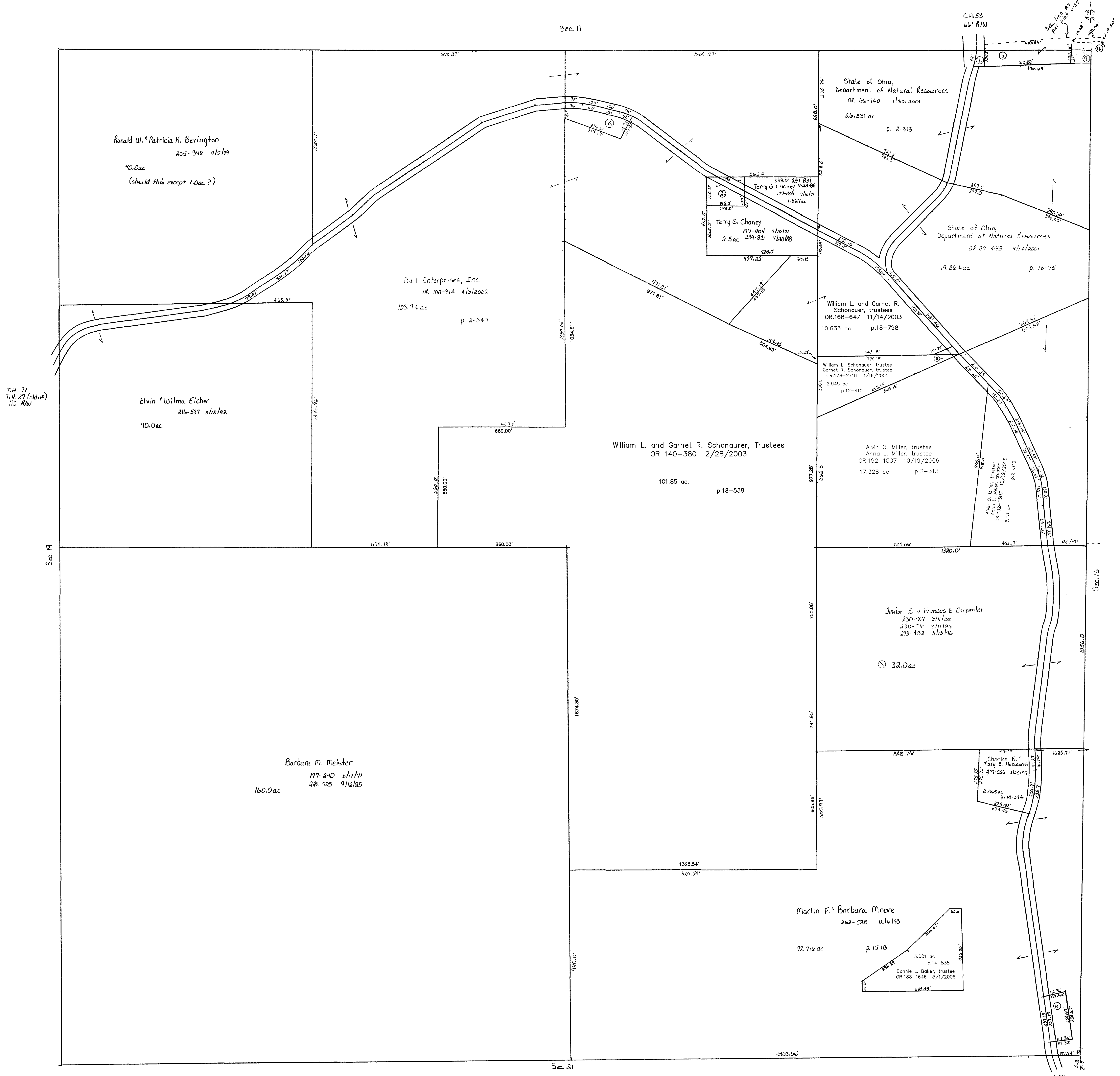


Sec. 11



- ① KILLBUCK SPORTSMEN'S CLUB, INC.
OR.0116-836 7/3/2002
0.071 ac p.18-321
- ② CHANEY TERRY C.
177-804 9/10/1971
239-831 7/28/1988
0.673 ac
- ③ KILLBUCK SPORTSMEN'S CLUB, INC.
157-545 2/14/1966
1.18 ac
- ④ KILLBUCK SPORTSMAN'S CLUB, INC.
189-803 2/25/1975
0.093 ac p.8-57
- ⑤ William L. Schonauer, trustee
Garnet R. Schonauer, trustee
OR.193-2884 12/21/2006
0.08 ac p.18-798
- ⑥ VANISICKLE JACK DALE
OR.0101-715 1/31/2002
0.651 ac p.14-374
- ⑦ NORTH AMERICAN WOODLANDS, LTD.
OR.0116-839 7/3/2002
0.091 ac p.18-321
- ⑧ GIFFIN MICHAEL J.
OR.0088-549 5/28/2001
0.9135 ac p.12-796

T-8, R-8, Sec. 20
KILLBUCK TWP.
scale: 1" = 200'
Last Revision: 12/21/2006

LET IT BE KNOWN, THIS MAP HAS BEEN PREPARED AS A REFERENCE GUIDE TO PROPERTY OWNERSHIP. WE BELIEVE THIS INFORMATION TO BE CORRECT AND CURRENT, HOWEVER, IT IS NOT INTENDED FOR ANY LEGAL USE, WHETHER IT BE IN SALES, TRANSFERS, TRADES, LEASES OF ANY TYPE, ETC., AND DO NOT ACCEPT RESPONSIBILITY FOR ERRORS OF ANY NATURE OR OMISSIONS CONTAINED HEREIN.

K-12