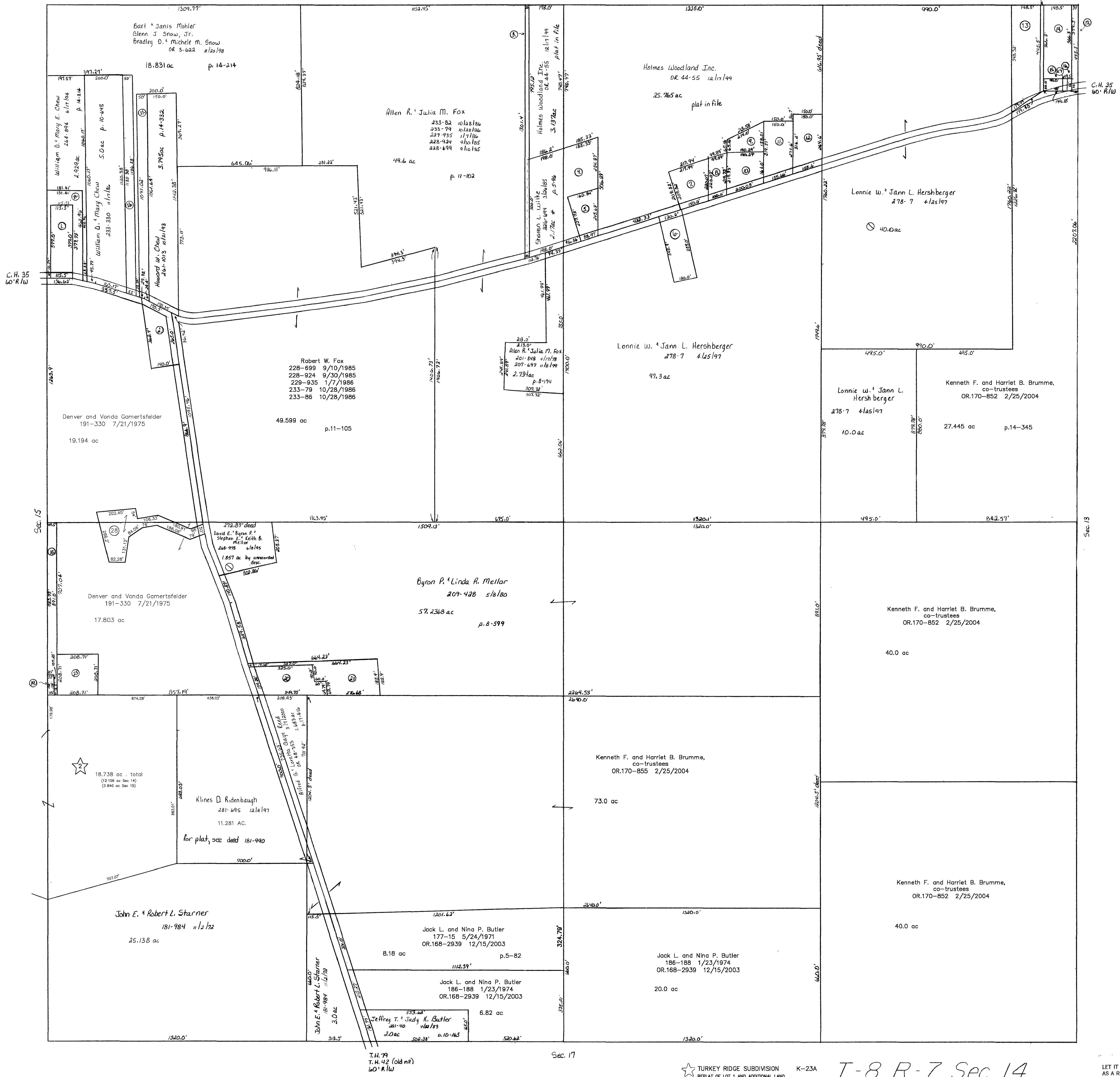


* The 2.17ac desc. covers part of the 20' drive owned by Flynn, 1/8-5/51. Revised plat, 8-4/35, only goes to the east line of the drive & the new acreage is 2.043, however, the new desc. is not recorded on a deed.

Sec. 7



Sec. 17

TURKEY RIDGE SUBDIVISION K-23A
 REPLAT OF LOT 1 AND ADDITIONAL LAND
 p.18-732 9/16/2003

T-8, R-7, Sec. 14
 KILLBUCK TWP.

SCALE: 1" = 200'
 Updated: 6/1/2004

LET IT BE KNOWN, THIS MAP HAS BEEN PREPARED AS A REFERENCE GUIDE TO PROPERTY OWNERSHIP. WE BELIEVE THIS INFORMATION TO BE CORRECT AND CURRENT, HOWEVER, IT IS NOT INTENDED FOR ANY LEGAL USE, WHETHER IT BE IN SALES, TRANSFERS, TRADES, LEASES OF ANY TYPE, ETC., AND DO NOT ACCEPT RESPONSIBILITY FOR ERRORS OF ANY NATURE OR OMISSIONS CONTAINED HEREIN.

K-23