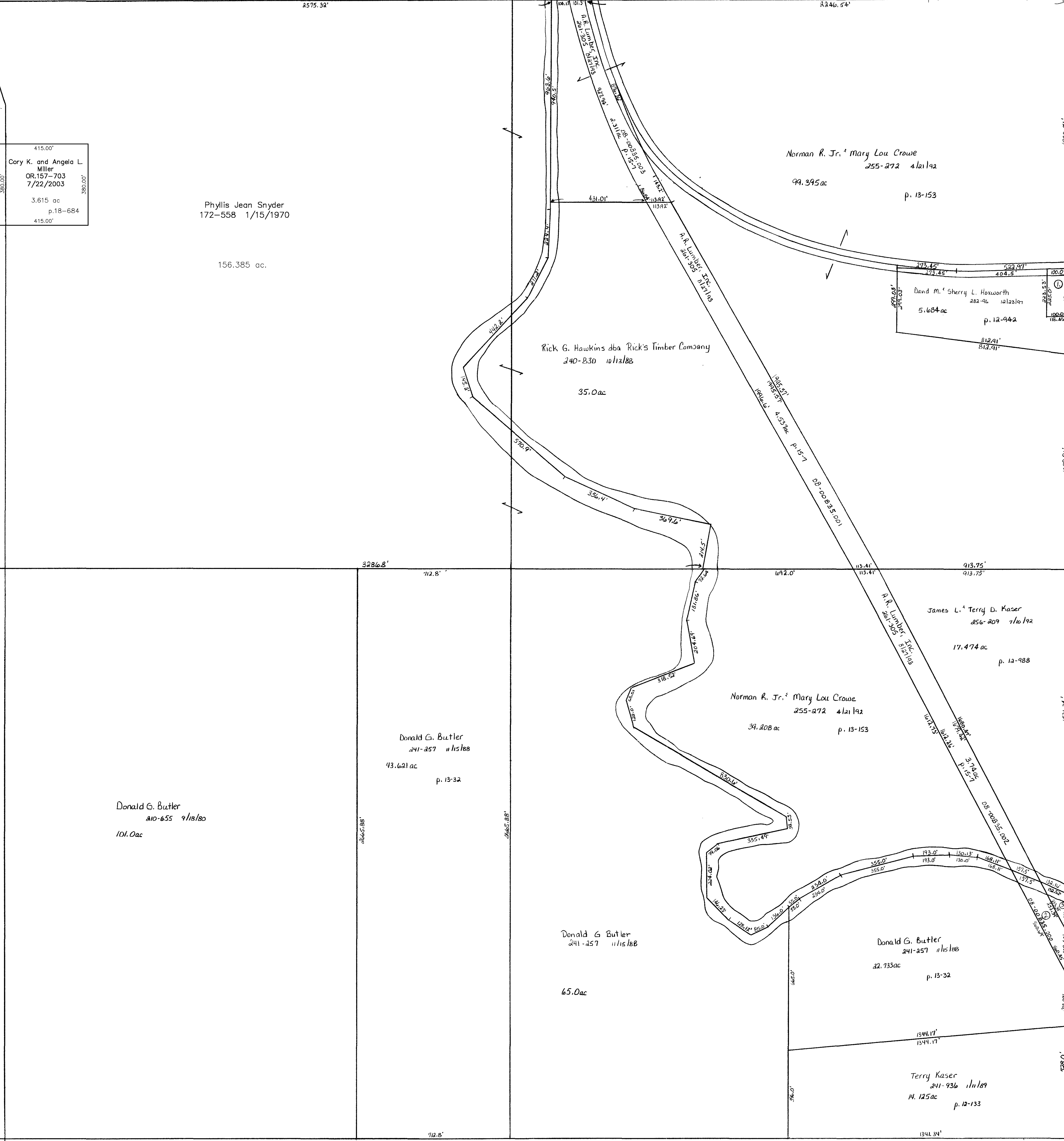


C.H. 53
66 R/10



415.00'
Cory K. and Angela L. Miller
OR.157-703
7/22/2003
3.615 ac
p. 18-684
415.00'

Phyllis Jean Snyder
172-558 1/15/1970
156.385 ac.

Rick G. Hawkins dba Rick's Timber Company
240-230 10/12/88
35.0 ac

Norman R. Jr. & Mary Lou Crowe
255-272 4/12/92
99.395 ac
p. 13-153

David M. & Sherry L. Hoxworth
282-46 10/25/89
5.684 ac
p. 12-942

James L. & Terry D. Kaser
256-209 7/6/92
17.474 ac
p. 12-988

Norman R. Jr. & Mary Lou Crowe
255-272 4/12/92
39.208 ac
p. 13-153

Donald G. Butler
241-257 11/15/88
43.621 ac
p. 13-32

Donald G. Butler
210-655 9/18/80
101.0 ac

Donald G. Butler
241-257 11/15/88
45.0 ac

Donald G. Butler
241-257 11/15/88
22.733 ac
p. 13-32

Terry Kaser
241-936 11/18/89
14.125 ac
p. 12-133

Sec. 21

Sec. 16

S.R. 60

Sec. 24

Killbuck Creek

Coshocton County

T-8, R-7, Sec. 25
KILLBUCK TWP.

SCALE: 1" = 200'
Updated: 1/1/2004

LET IT BE KNOWN, THIS MAP HAS BEEN PREPARED AS A REFERENCE GUIDE TO PROPERTY OWNERS. WE BELIEVE THIS INFORMATION TO BE CORRECT AND CURRENT, HOWEVER, IT IS NOT INTENDED FOR ANY LEGAL USE, WHETHER IT BE IN SALES, TRANSFERS, TRADES, LEASES OF ANY TYPE, AND DO NOT ACCEPT RESPONSIBILITY FOR ERRORS OF ANY NATURE OR OMISSIONS CONTAINED HEREIN.

