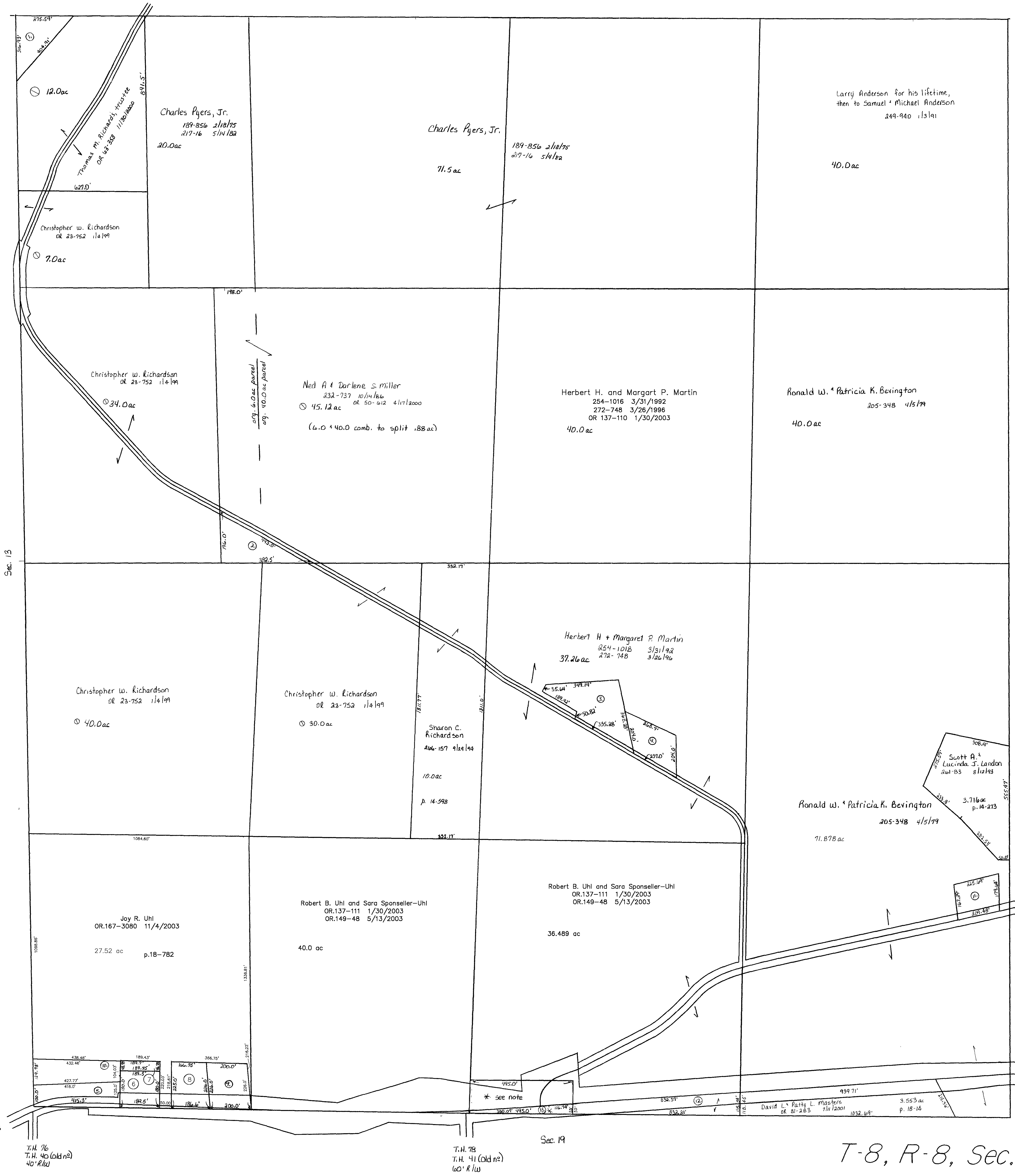


T.H. 56
old n=same
30' 60' R/W

Sec. 9



Sec. 13

Sec. 11

Sec. 19

U.S. 60
R/W varies
see plans

T.H. 76
T.H. 42 (old n2)
40' R/W

T.H. 78
T.H. 41 (old n2)
60' R/W

U.S. 60
C.H. 2 A (old n2)
60' R/W

U.S. 60
R/W varies
see plans

* Bradford Middaugh, 33-156 11/11/1890, is the last deeded owner for 30 rods x 10 rods parcel (1.475 ac). This parcel is excepted on Uhl's deeds 118-517-519, however, it is not subtracted from his taxable acreage. A piece of this tract was G.C. from Uhl to Masters in 262-806 12/21/192 p. 14-249

T-8, R-8, Sec. 12
KILLBUCK TWP.

scale: 1" = 200'

Last Revision: 12/20/2004

LET IT BE KNOWN, THIS MAP HAS BEEN PREPARED AS A REFERENCE GUIDE TO PROPERTY OWNERSHIP. WE BELIEVE THIS INFORMATION TO BE CORRECT AND CURRENT, HOWEVER, IT IS NOT INTENDED FOR ANY LEGAL USE, WHETHER IT BE IN SALES, TRANSFERS, TRADES, LEASES OF ANY TYPE, ETC., AND DO NOT ACCEPT RESPONSIBILITY FOR ERRORS OF ANY NATURE OR OMISSIONS CONTAINED HEREIN.

