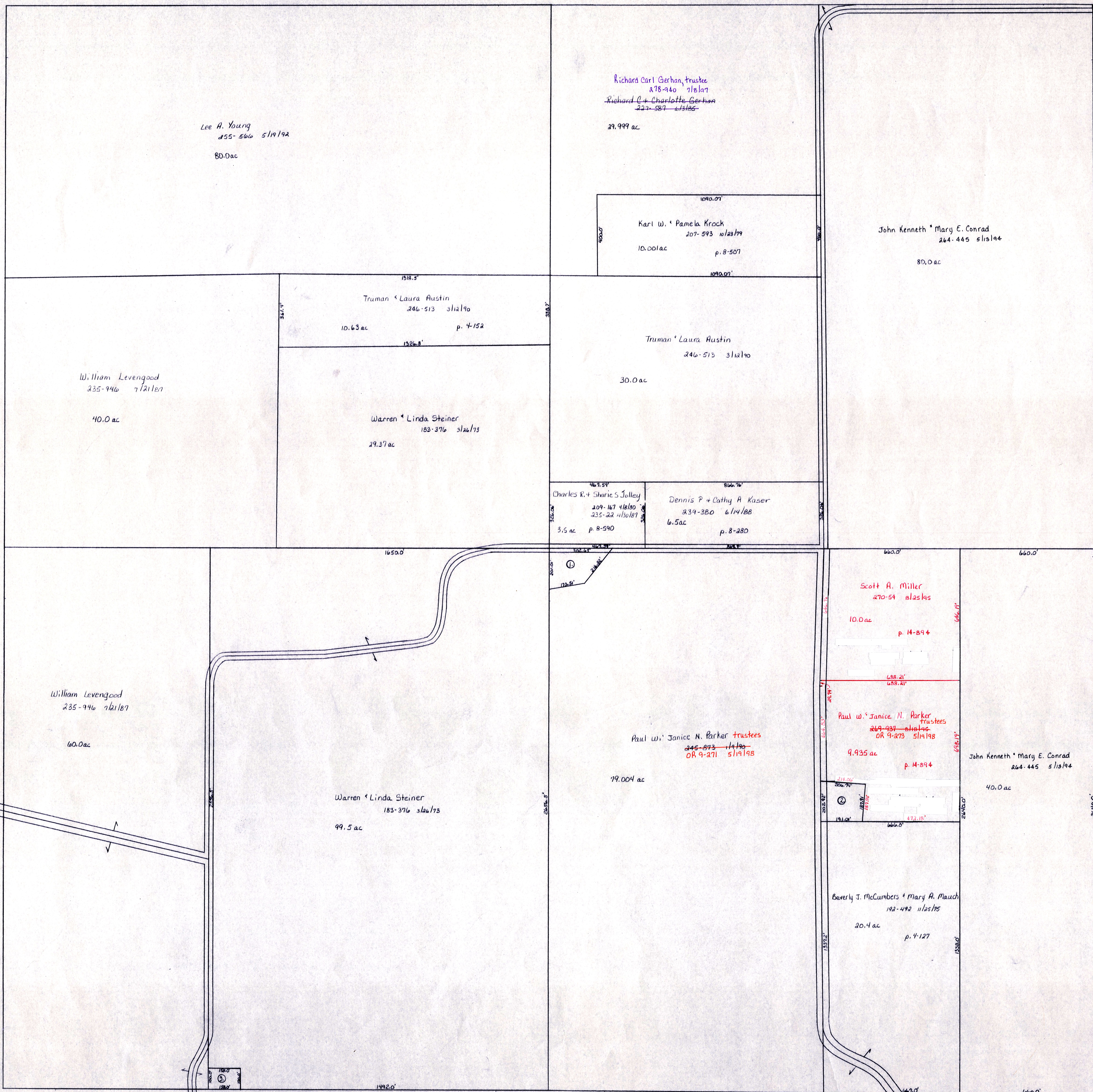


Sec. 18

T.H. 80
T.H. 43 (old n^s)
40' R/W

- ① David A. Yoder 231-45 8/11/80 207-119 8/27/79 1996a p. 8-42
- ② Franklin Earl Allebaugh 207-916 10/26/79 1891ac p. 8-510
- ③ Trustees of Killbuck Township 76-536 1/7/10 15ac T.E.



Sec. 24

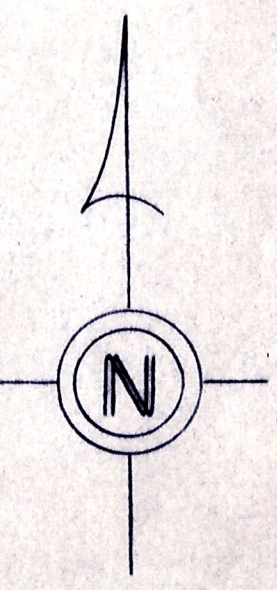
Mechanic Twp.

T.H. 81
T.H. 44 (old n^s)
60' R/W

T.H. 85
T.H. 44 (old n^s)
40' R/W

Coshacton County

T.H. 80
T.H. 43 (old n^s)
No R/W



LET IT BE KNOWN, THIS MAP HAS BEEN PREPARED AS A REFERENCE GUIDE TO PROPERTY OWNERSHIP. WE BELIEVE THIS INFORMATION TO BE CORRECT AND CURRENT. HOWEVER, IT IS NOT INTENDED FOR ANY LEGAL USE, WHETHER IT BE IN SALES, TRANSFERS, TRADES, LEASES OF ANY TYPE, ETC., AND DO NOT ACCEPT RESPONSIBILITY FOR ERRORS OF ANY NATURE OR OMISSIONS CONTAINED HEREIN.

T-8, R-7, Sec. 23
KILLBUCK TWP.

SCALE: 1" = 200'

17-000