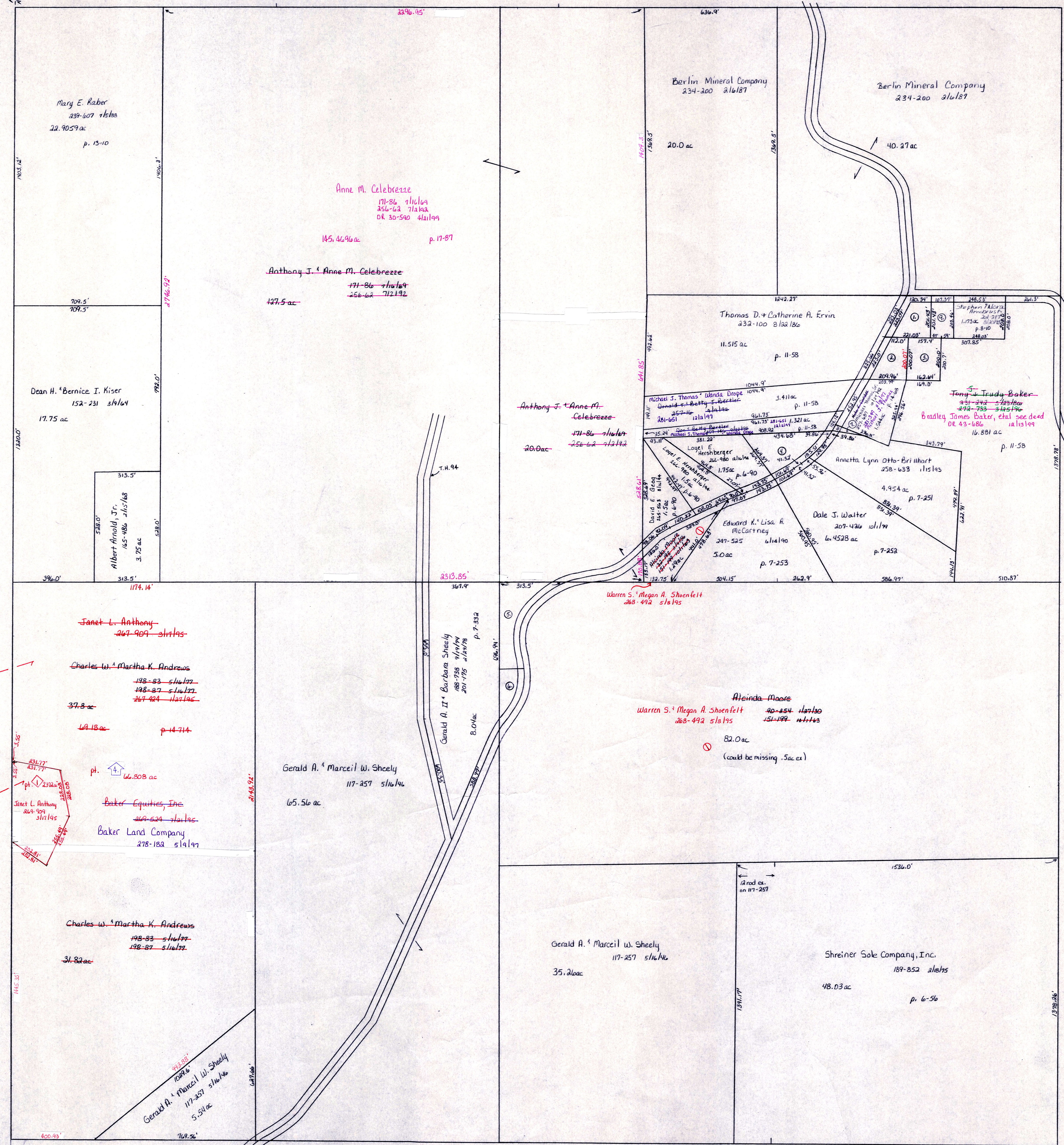


Hardy Twp.

T.H. 90
T.H. 300 (old n^o)
60' R/W



Northridge Development
 Plat 2-249 PARTED 11/1/05
 Lot 1 = 13.232 ac total
 Lot 2 = 80.423 ac total

Regist of Lot No. 2 of
 Northridge Development
 Plat 2-249 PARTED 11/1/07
 Lot 3 = 5.355 ac total
 Lot 4 = 75.074 ac total

- ① Kenneth F. McVicker 234-240 2/27/87 .783ac p. 8-110
- ② Delores Lamp 191-219 7/21/85 .89 ac p. 3-79
- ③ Lawrence Lamp 198-617 7/1/77 .73ac p. 8-17
- ④ Loyel E. Hershberger 266-980 2/12/94 1.25ac p. 6-90
- ⑤ Glen Cutlip 235-89 5/11/87 1.0ac
- ⑥ Glen Cutlip 235-89 5/11/87 .5ac
- ⑦ Annetta Lynn Otto-Brihbart 258-638 11/5/83 .041ac p. 12-525

© Kenneth F. McVicker 254-980 2/27/87 .5ac p. 12-580
 255-248 2/2/84

T-8, R-7, Sec. 5
 KILLBUCK TWP.
 SCALE: 1" = 200'

LET IT BE KNOWN, THIS MAP HAS BEEN PREPARED AS A REFERENCE GUIDE TO PROPERTY OWNERSHIP. WE BELIEVE THIS INFORMATION TO BE CORRECT AND CURRENT, HOWEVER, IT IS NOT INTENDED FOR ANY LEGAL USE, WHETHER IT BE IN SALES, TRANSFERS, TRADES, LEASES OF ANY TYPE, ETC., AND DO NOT ACCEPT RESPONSIBILITY FOR ERRORS OF ANY NATURE OR OMISSIONS CONTAINED HEREIN.

K-20