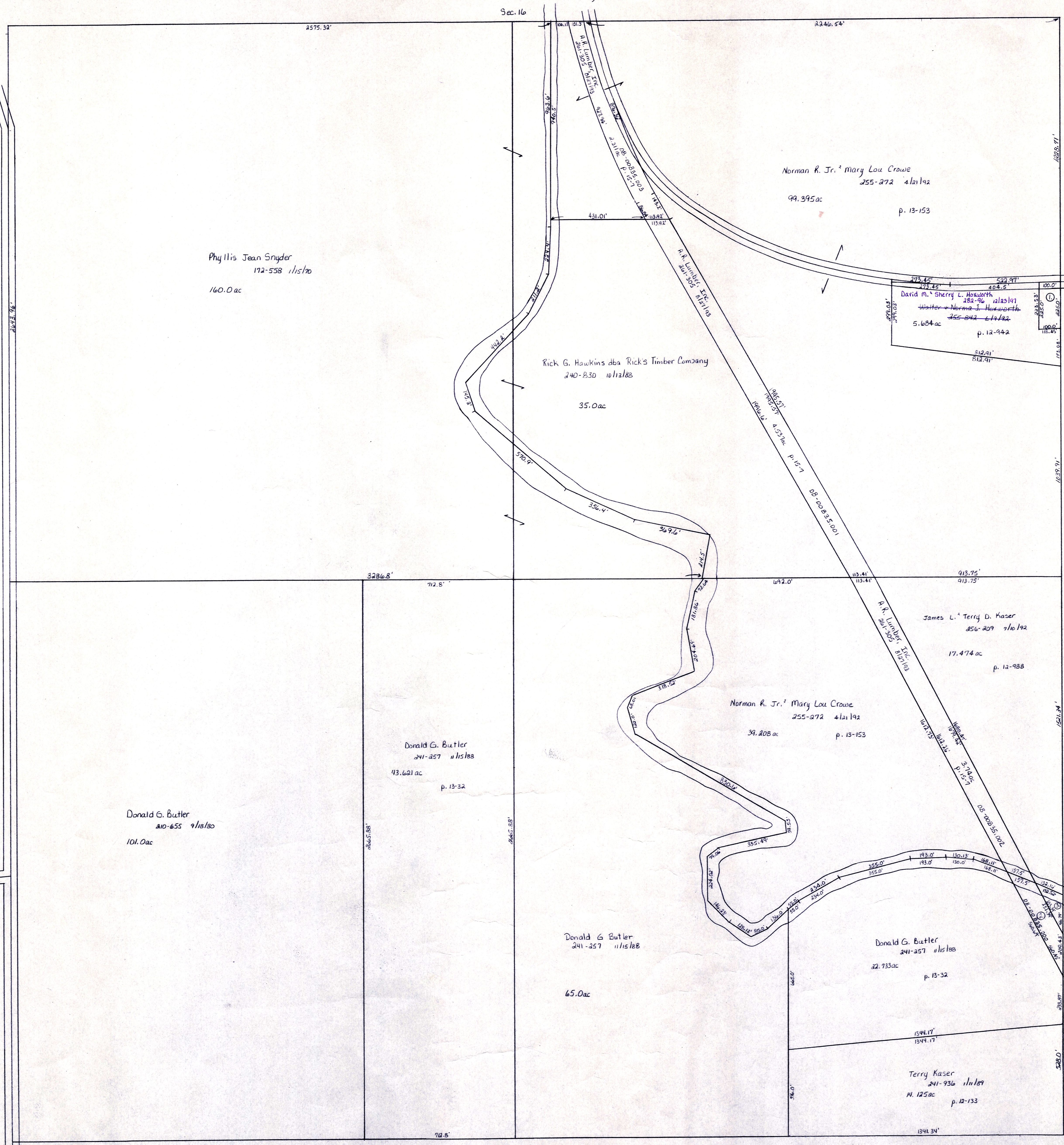


C.H. 53
66' R/W



Sec. 21

Sec. 16

S.R. 60

Sec. 24

Killbuck Creek

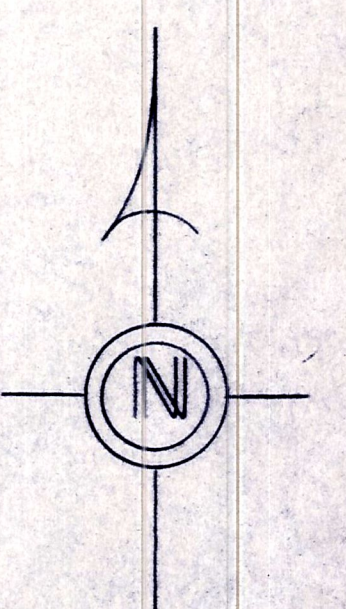
Coshocton County

T.H. 67
7.4.36 (old)
60' R/W

C.H. 53
66' R/W

- ① Clarence Hoxworth 54-95-145-418 4/6/67 .51 ac p. 3-30 B
- ② A.R. Lumber, Inc. 261-305 01/27/93 .925 ac p. 15-7
- ③ Donald G. Butler 241-257 11/15/88 .83 ac p. 13-32

T-8, R-7, Sec. 25
KILLBUCK TWP.
SCALE: 1" = 200'



LET IT BE KNOWN, THIS MAP HAS BEEN PREPARED AS A REFERENCE GUIDE TO PROPERTY OWNERSHIP. WE BELIEVE THIS INFORMATION TO BE CORRECT AND CURRENT, HOWEVER, IT IS NOT INTENDED FOR ANY LEGAL USE, WHETHER IT BE IN SALES, TRANSFERS, TRADES, LEASES OF ANY TYPE, ETC. AND DO NOT ACCEPT RESPONSIBILITY FOR ERRORS OF ANY NATURE OR OMISSIONS CONTAINED HEREIN.

K-16