

M-20

H-02

H-08

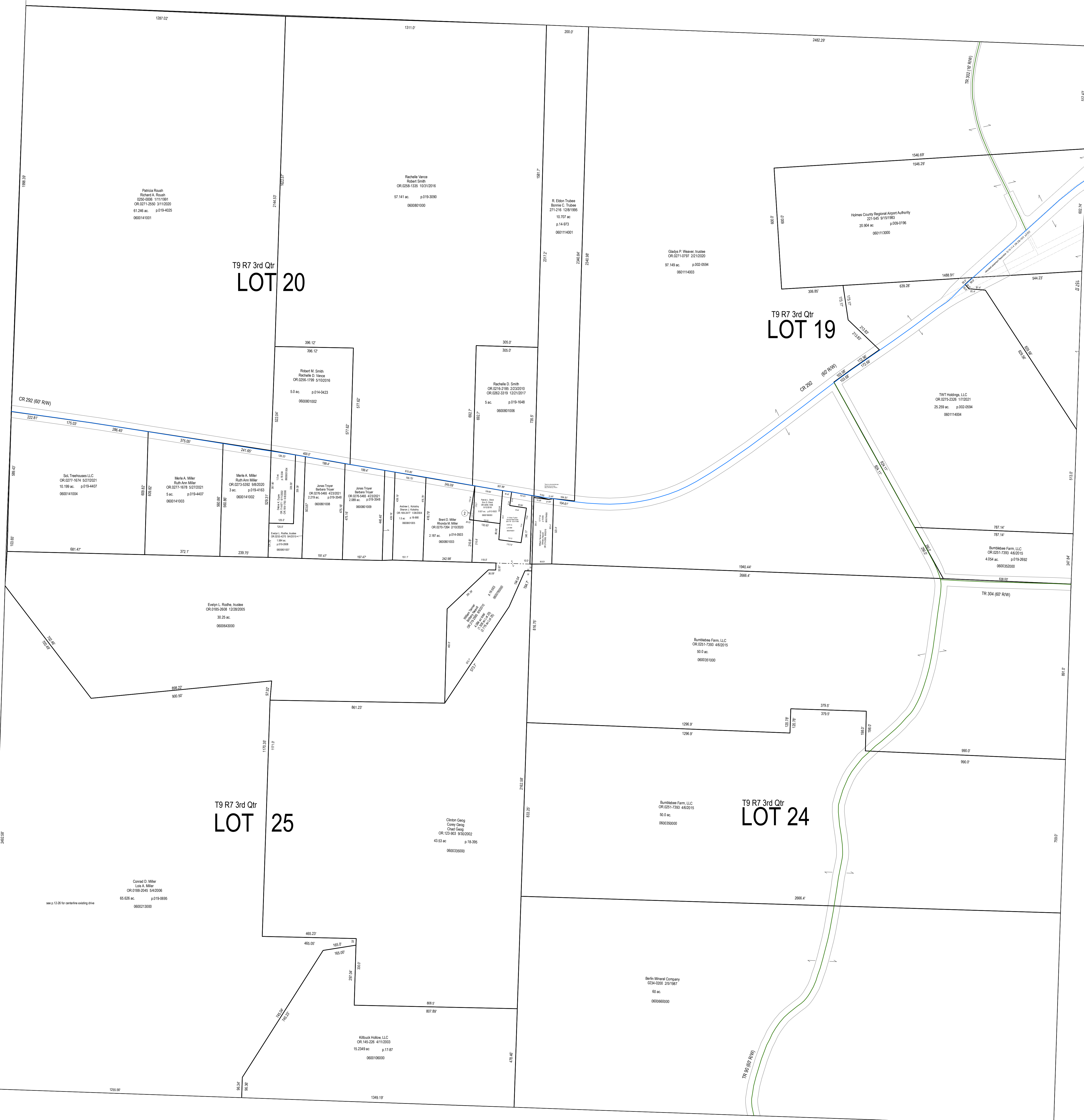
M-19

H-07

K-15

K-20

K-25

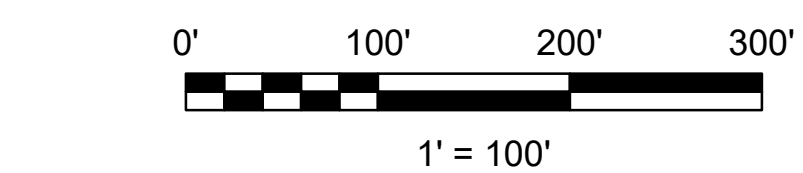


T9 R7 3rd Qtr
LOT 20

T9 R7 3rd Qtr
LOT 19

T9 R7 3rd Qtr
LOT 25

T9 R7 3rd Qtr
LOT 24



LET IT BE KNOWN, THIS MAP HAS BEEN PREPARED AS A REFERENCE GUIDE TO PROPERTY OWNERSHIP. WE BELIEVE THIS INFORMATION TO BE CORRECT AND CURRENT, HOWEVER IT IS NOT INTENDED FOR ANY LEGAL USE, WHETHER IT BE SALES, TRANSFERS, TRADES, LEASES OF ANY TYPE, ETC. AND DO NOT ACCEPT RESPONSIBILITY FOR ERRORS OF ANY NATURE OR OMISSIONS CONTAINED HEREIN.

S.F.T.
new survey required
for next transfer

Last Revision: 1/5/2022

Lots 19, 20, 24 & 25
3rd Qtr., T-9, R-7
Hardy Twp.
Holmes County, Ohio

H-01