

H-23

H-28

H-34

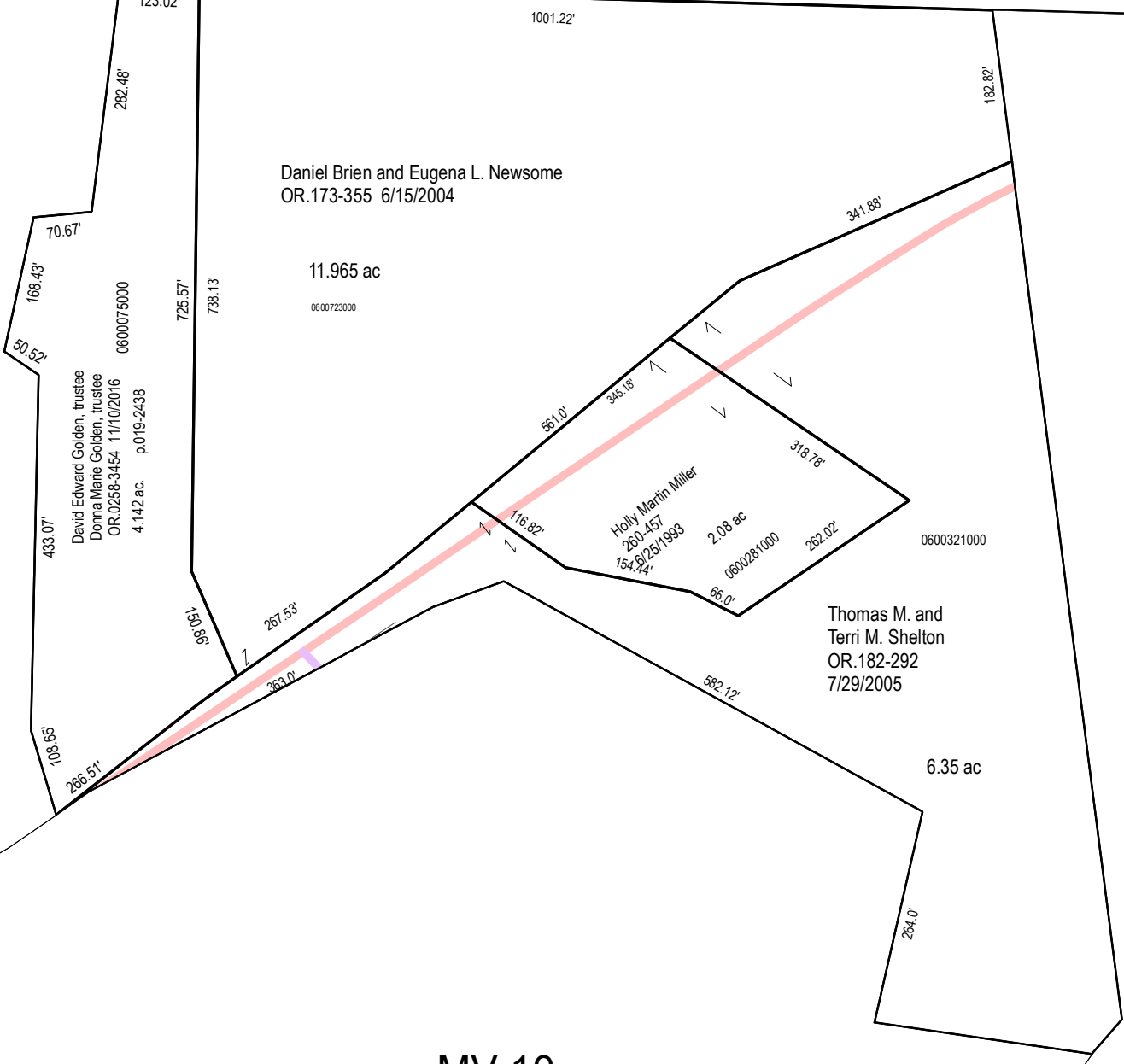
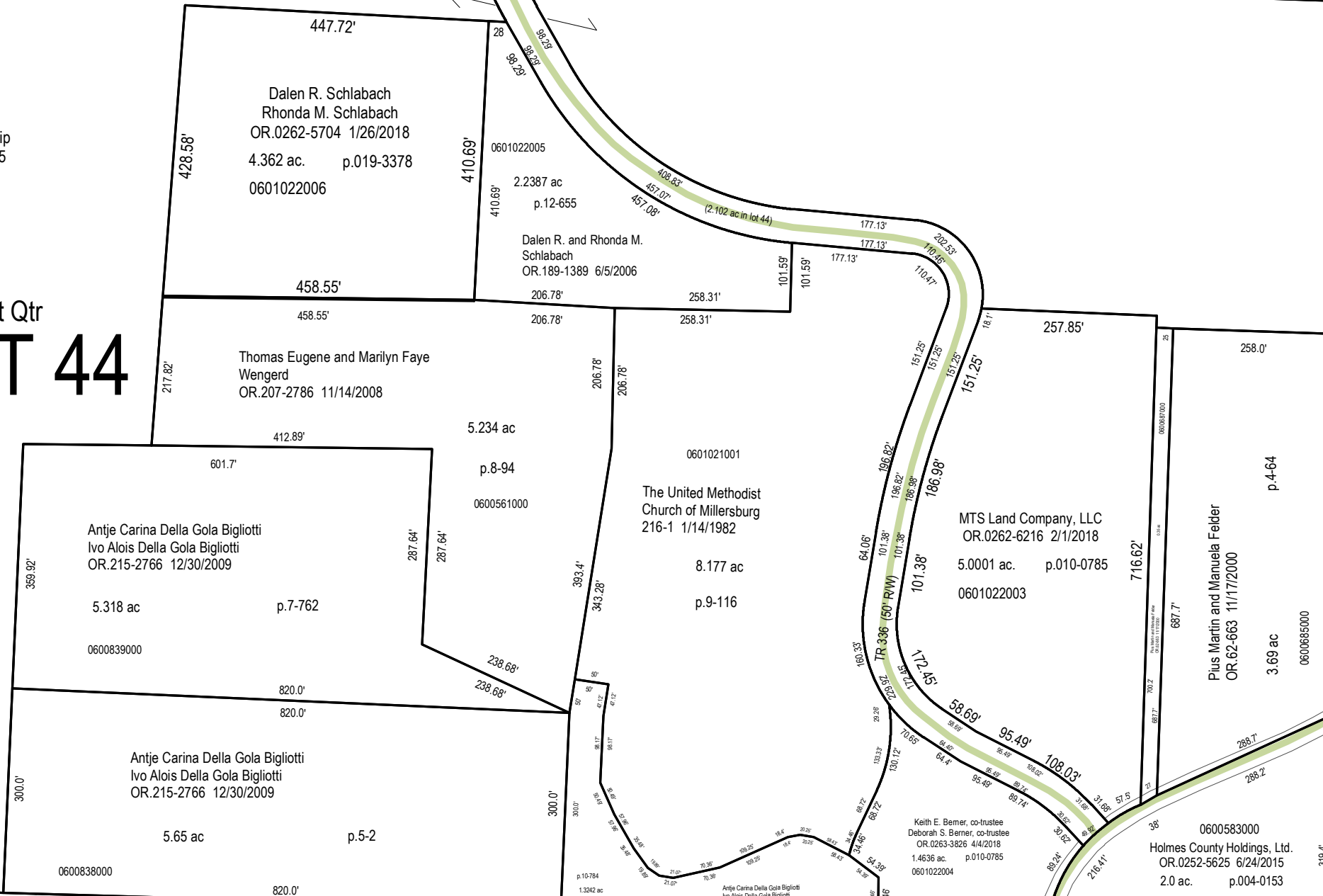
MV-14

Hipp Limited Partnership
271-487 12/28/1995
73.839 ac.
T9 R7 1st Qtr
LOT 40

Hipp Limited Partnership
0271-0487 12/28/1995
71.8023 ac.
0601098000
T9 R7 1st Qtr
LOT 39

Hipp Limited Partnership
271-487 12/28/1995
78.0 ac.
T9 R7 1st Qtr
LOT 45

Hipp Limited Partnership
0271-0487 12/28/1995
36.5804 ac.
0601022000
T9 R7 1st Qtr
LOT 44



MV-02

H-22

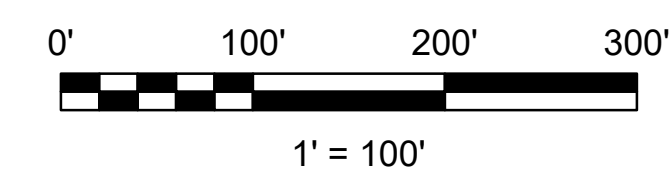
H-33

MV-04

MV-05

H-27A

MV-10



LET IT BE KNOWN, THIS MAP HAS BEEN PREPARED AS A REFERENCE GUIDE TO PROPERTY OWNERSHIP. WE BELIEVE THIS INFORMATION TO BE CORRECT AND CURRENT. HOWEVER, IT IS NOT INTENDED FOR ANY LEGAL USE, WHETHER IT BE SALES, TRANSFERS, TRADES, LEASES OF ANY TYPE, ETC. AND DO NOT ACCEPT RESPONSIBILITY FOR ERRORS OF ANY NATURE OR OMISSIONS CONTAINED HEREIN.

S.F.T.
new survey required
for next transfer

Last Revision: 1/3/2019



**Lots 39 & 40, 1st Qtr
Lots 44 & 45, 1st Qtr
Sec. 11, T-9, R-7
Hardy Twp.
Holmes County, Ohio**

H-27