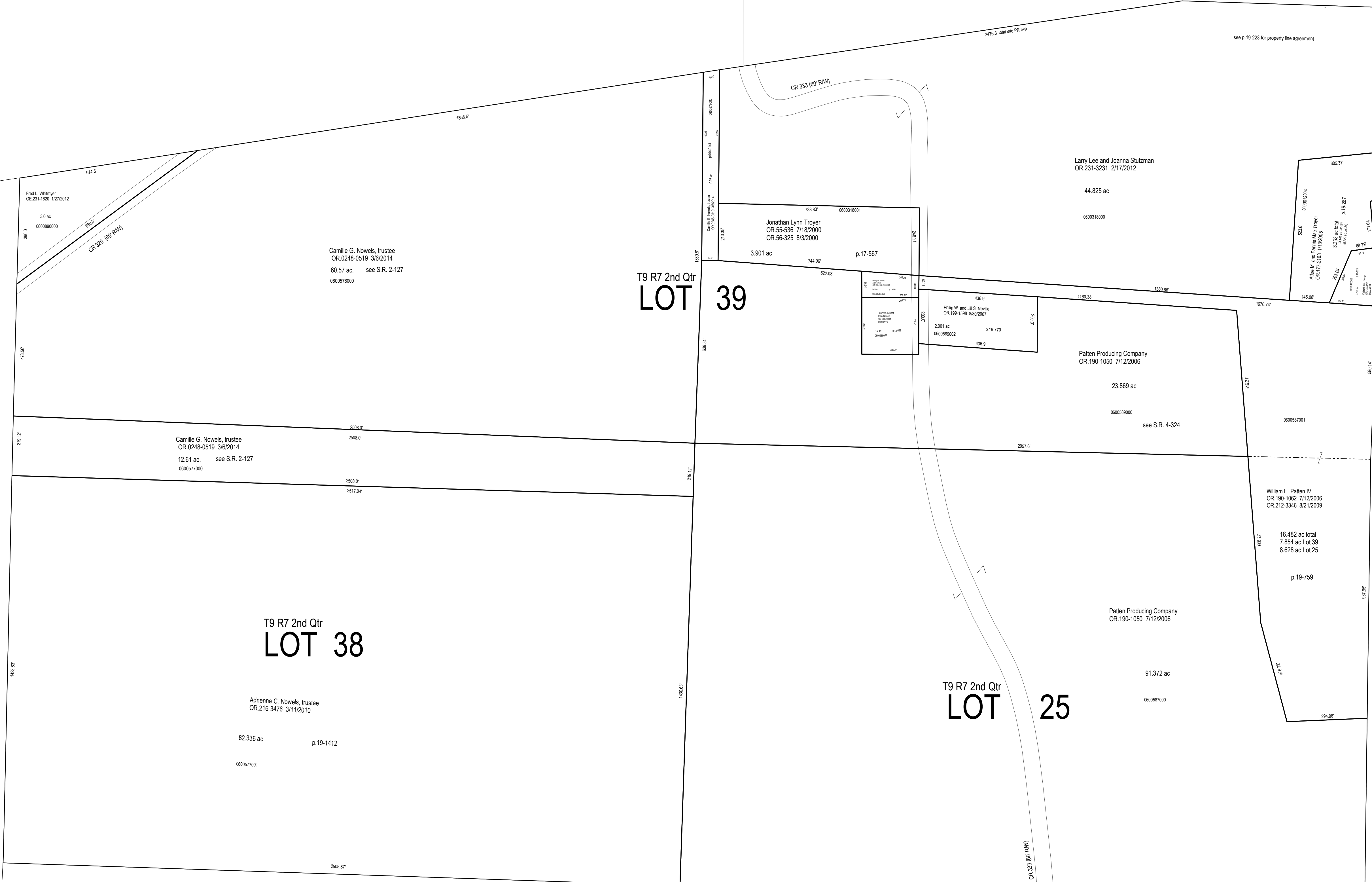


PR-01

PR-06



T9 R7 2nd Qtr
LOT 39

T9 R7 2nd Qtr
LOT 38

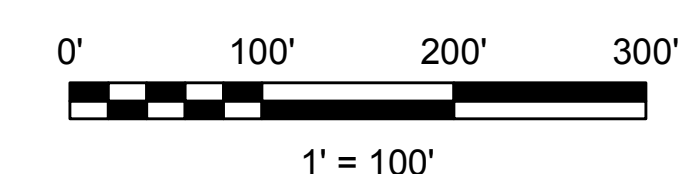
T9 R7 2nd Qtr
LOT 25

M-23

H-12

H-05

H-11



LET IT BE KNOWN, THIS MAP HAS BEEN PREPARED AS A REFERENCE GUIDE TO PROPERTY OWNERSHIP. WE BELIEVE THIS INFORMATION TO BE CORRECT AND CURRENT. HOWEVER, IT IS NOT INTENDED FOR ANY LEGAL USE, WHETHER IT BE SALES, TRANSFERS, TRADES, LEASES OF ANY TYPE, ETC. AND DO NOT ACCEPT RESPONSIBILITY FOR ERRORS OF ANY NATURE OR OMISSIONS CONTAINED HEREIN.

S.F.T.
new survey required
for next transfer

Last Revision: 1/2/2018



Lots 25, 38 & 39
2nd Qtr., T-9, R-7
Hardy Twp.
Holmes County, Ohio

H-06