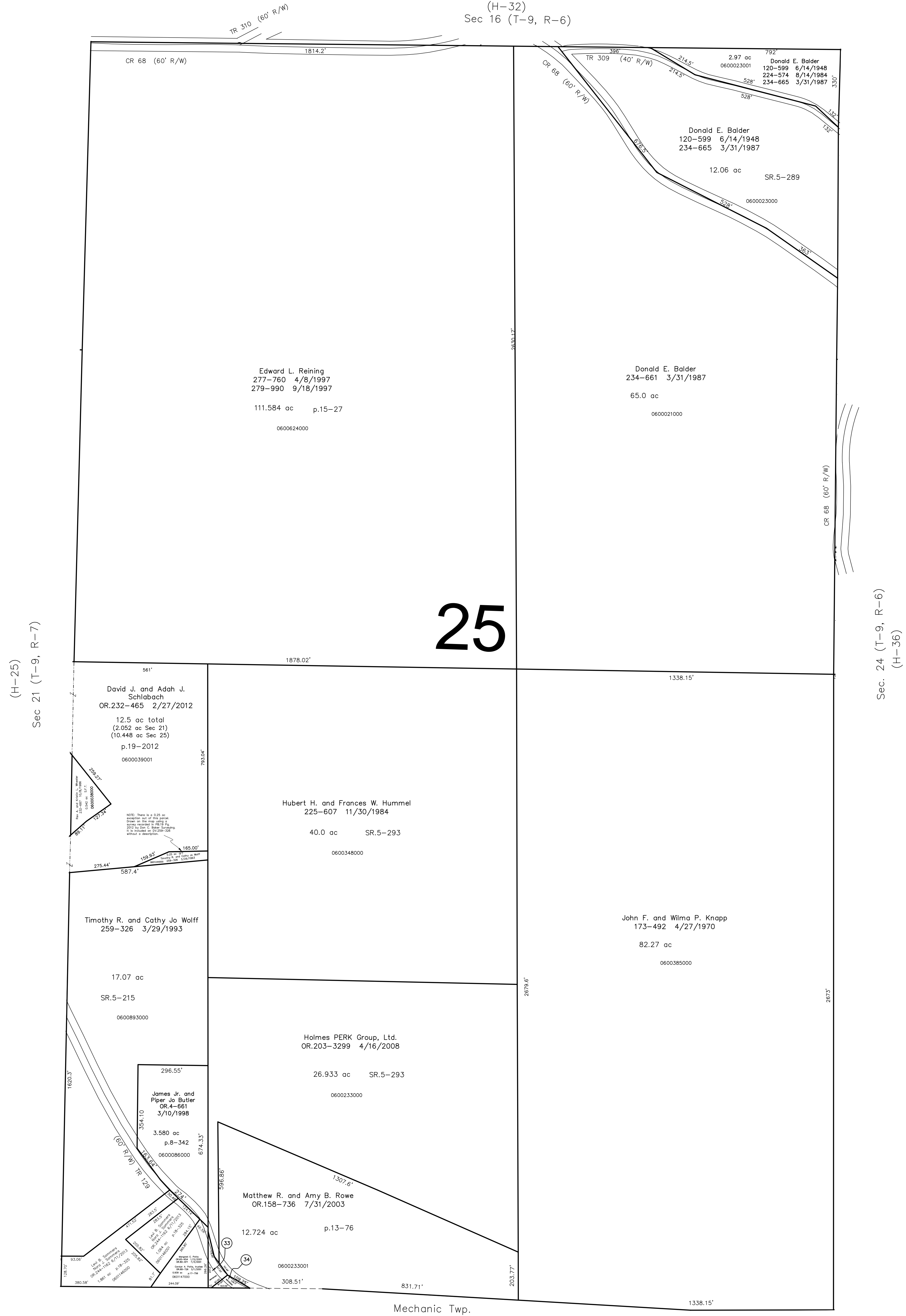


(H-32)  
Sec 16 (T-9, R-6)

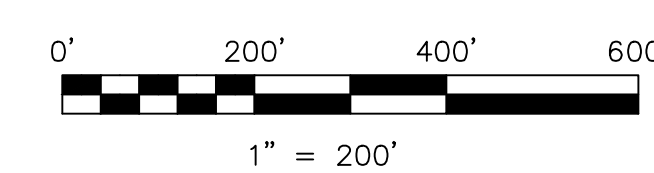


0601051000 33 CAROLYN A. POTTS, TRUSTEE  
 MARGARET E. POTTS  
 OR.0065-654 1/12/2001  
 OR.0068-726 3/1/2001  
 OR.0090-871 7/13/2001  
 0.186 ac p.17-756

0601050000 34 Todd A. and Janet C. Messer  
 OR.195-1968 3/15/2007  
 OR.195-1972 3/15/2007  
 0.103 ac p.19-968

Last Revision: 6/11/2013

**T-9, R-6, Section 25  
HARDY TWP.  
HOLMES COUNTY, OHIO**



S.F.T. new survey required  
 for next transfer

LET IT BE KNOWN, THIS MAP HAS BEEN PREPARED AS A REFERENCE  
 GUIDE TO PROPERTY OWNERSHIP. WE BELIEVE THIS INFORMATION TO  
 BE CORRECT AND CURRENT, HOWEVER IT IS NOT INTENDED FOR ANY  
 LEGAL USE, WHETHER IT BE IN SALES, TRANSFERS, TRADES, LEASES  
 OF ANY TYPE, ETC., AND DO NOT ACCEPT RESPONSIBILITY FOR  
 ERRORS OF ANY NATURE OR OMISSIONS CONTAINED HEREIN.

# H-31