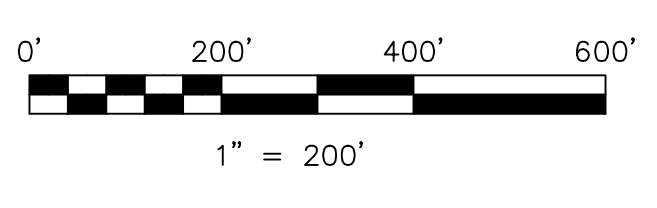


(H-14)  
Sec. 18

nw 1/4 Fair Brothers Subdivision  
P.19-837 Platted 10/16/2006

0601222000 (18) J.D. Hipp Farms, Ltd.  
OR 185-1897 12/19/2005  
9.823 ac total p.2-413  
(0.003 ac Sec 19, 9.26 ac Sec 12)

NOTE:  
THE LOTS AND/OR PARCELS LOCATED WITHIN THE VILLAGE  
OF MILLERSBURG ARE PROVIDED AS A REFERENCE GUIDE  
ONLY. PLEASE SEE MILLERSBURG MAPS FOR DETAILED  
INFORMATION ON THESE PARCELS.



S.F.T. new survey required  
for next transfer

LET IT BE KNOWN, THIS MAP HAS BEEN PREPARED AS A REFERENCE  
GUIDE TO PROPERTY OWNERSHIP. WE BELIEVE THIS INFORMATION TO  
BE CORRECT AND CURRENT, HOWEVER IT IS NOT INTENDED FOR ANY  
LEGAL USE, WHETHER IT BE IN SALES, TRANSFERS, TRADES, LEASES  
OF ANY TYPE, ETC., AND DO NOT ACCEPT RESPONSIBILITY FOR  
ERRORS OF ANY NATURE OR OMISSIONS CONTAINED HEREIN.

Last Revision: 3/22/2013

**T-9, R-7, Section 19  
HARDY TWP.  
HOLMES COUNTY, OHIO**

**H-21**