

Lot 7 3rd Qtr.

(H-8)

Lot 12 3rd Qtr.

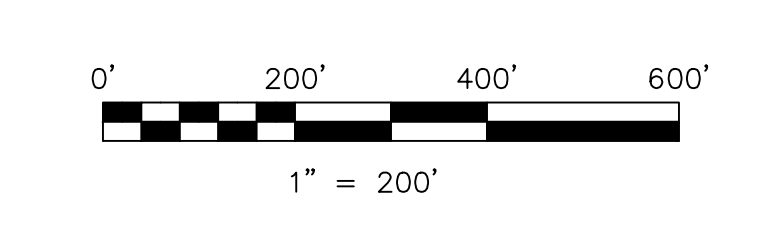
Section 19 (H-21)

Lot 16 3rd Qtr.

Sec. 23

- 0600912003 (5) Stanley Z. and Catherine R. Gettgey
OR.228-1014 9/6/2011
0.038 ac p.14-24
- 0601225000 (6) Michael E. and Amy L. Fair
OR.207-3483 12/2/2008
OR.208-487 12/12/2008
0.0687 ac S.F.T.
- 0600062001 (7) BIRD THOMAS K. AND CHERYL L. TRUSTEES
OR.0066-22 1/19/2001
OR.0066-43 1/19/2001
0.092 ac p.12-54
- 0600816001 (8) FAIR MICHAEL E. AND AMY L.
218-314 9/24/1992
0.110 ac S.F.T. (see SR.4-173 & DV.66-86)
- 0600787001 (9) ROWLAND RONALD L. TRUSTEE
OR.0175-2879 10/21/2004
0.0543 ac p.19-27

S.F.T. new survey required for next transfer



LET IT BE KNOWN, THIS MAP HAS BEEN PREPARED AS A REFERENCE GUIDE TO PROPERTY OWNERSHIP. WE BELIEVE THIS INFORMATION TO BE CORRECT AND CURRENT, HOWEVER IT IS NOT INTENDED FOR ANY LEGAL USE, WHETHER IT BE IN SALES, TRANSFERS, TRADES, LEASES OF ANY TYPE, ETC., AND DO NOT ACCEPT RESPONSIBILITY FOR ERRORS OF ANY NATURE OR OMISSIONS CONTAINED HEREIN.

Last Revision: 1/10/2013

**T-9, R-7, SECTION 18
3rd QTR. LOTS 6, 11
HARDY TWP.
HOLMES COUNTY, OHIO**

H-14