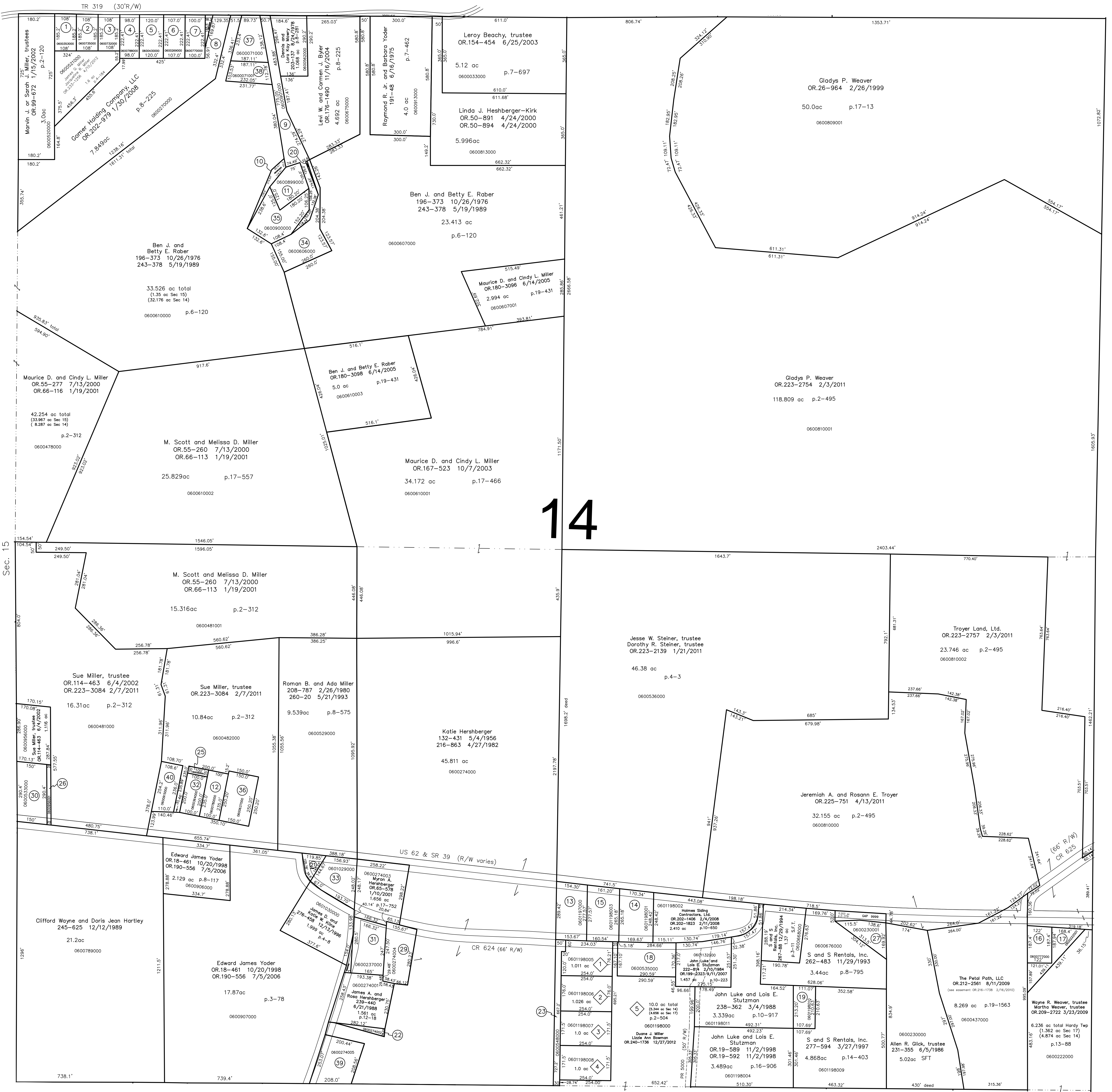


- 0600353000 ① Michael R. Hoxworth  
OR.98-534 12/18/2001  
0.50 ac p.4-184
- 0600735000 ② W. Tom Terwilliger  
OR.189-267 9/19/2005  
OR.210-168 4/7/2009  
0.459 ac p.8-93
- 0600732000 ③ W. Tom Terwilliger  
OR.189-267 9/19/2005  
OR.210-168 4/7/2009  
0.459 ac p.8-93
- 0600788000 ④ Paul and Peggy Swartzentruber  
199-344 9/9/1977  
274-640 8/5/1996  
0.50 ac p.5-147
- 0600430000 ⑤ Steven L. and Emily C. Workman  
OR.210-1245 4/27/2009  
0.61 ac p.5-147
- 0600269000 ⑥ Jeremy L. and Janelle D. Yoder  
OR.191-2669 9/25/2006  
0.55 ac p.7-105
- 0600770000 ⑦ June L. Roberts  
288-330 4/26/1995  
OR.6-974 4/14/1998  
OR.62-838 11/21/2000  
0.51 ac p.7-108
- 0600769000 ⑧ June L. Roberts  
288-330 4/26/1995  
OR.6-974 4/14/1998  
OR.62-838 11/21/2000  
0.51 ac p.7-108
- 0600901000 ⑨ Barbara W. and Paul Lamar Stoken  
OR.236-2721 8/6/2012  
1.372 ac p.9-9
- 0600902000 ⑩ Barbara W. and Paul Lamar Stoken  
OR.236-2721 8/6/2012  
0.179 ac p.9-9
- 0600899000 ⑪ Barbara W. and Paul Lamar Stoken  
OR.236-2721 8/6/2012  
0.55 ac p.9-9
- 0600780000 ⑫ Marvin P. and Donetta L. Troyer  
OR.225-2954 5/10/2011  
0.539 ac p.19-1836
- 0601197000 ⑬ Holmes Siding Contractors, Ltd.  
OR.202-1406 2/4/2008  
1.0 ac p.10-593
- 0601198000 ⑭ Holmes Siding Contractors, Ltd.  
OR.202-1406 2/4/2008  
1.0 ac p.10-550
- 0601198000 ⑮ Holmes Siding Contractors, Ltd.  
OR.202-1406 2/4/2008  
1.0 ac p.10-664
- 0600777000 ⑯ Rock Hill Land and Cattle Company, LLC  
OR.216-1742 2/16/2010  
0.51 ac p.3-188  
(see easement OR.216-1738 2/16/2010)
- 0600222000 ⑰ Rock Hill Land and Cattle Company, LLC  
OR.216-1742 2/16/2010  
0.628 ac p.10-569  
(see easement OR.216-1738 2/16/2010)
- 0600355000 ⑱ Holmes Siding Contractors, Ltd.  
OR.192-380 10/5/2006  
OR.202-1406 2/4/2008  
1.124 ac p.14-444
- 0601198010 ⑲ S and S Rentals, Inc.  
277-594 3/27/1997  
0.532 ac p.14-403
- 0600606000 ⑳ Barbara W. and Paul Lamar Stoken  
OR.236-2721 8/6/2012  
0.0163 ac p.16-459
- 0600907000 ㉑ Laner Corporation  
OR.101-202 1/28/2002  
0.201 ac p.16-886
- 0600274002 ㉒ James A. and Rosa Hershberger  
OR.63-570 12/4/2000  
0.114 ac p.17-713
- 0600548000 ㉓ Hidden Valley Acres, Ltd.  
OR.42-312 11/17/1999  
0.551 ac p.2-94
- 0000000000 ㉔ not used
- 0600365000 ㉕ Robert L. and Roberto S. Kasner  
178-429 11/5/1970  
196-386 11/12/1976  
273-620 5/22/1996  
OR.186-1932 2/3/2006  
0.08 ac p.5-9
- 0600956000 ㉖ Sue Miller Trustee  
OR.114-463 6/4/2002  
0.113 ac
- 0600230001 ㉗ Allen R. Glick, Trustee  
231-355 6/5/1986  
0.53 ac
- 0600000000 ㉘ not used
- 0600274004 ㉙ Donald M. and Joann Shoup  
OR.101-627 1/30/2002  
0.928 ac p.18-184
- 0600533000 ㉚ Triple M, Ltd.  
OR.149-895 5/21/2003  
1.0 ac
- 0600237000 ㉛ Henry G. Graff, trustee  
OR.37-908 8/31/1999  
1.0 ac
- 0600364000 ㉜ Robert L. and Roberto S. Kasner  
178-429 11/5/1970  
196-386 11/12/1976  
273-620 5/22/1996  
OR.186-1932 2/3/2006  
0.459 ac p.4-62
- 0601029000 ㉝ Laner Corporation  
OR.101-202 1/28/2002  
0.901 ac p.8-863
- 0600606000 ㉞ Ben J. and Betty E. Raber  
202-500 7/8/1978  
1.1307 ac p.8-225
- 0600900000 ㉟ Barbara W. and Paul Lamar Stoken  
OR.236-2721 8/6/2012  
1.08 ac p.5-59
- 0600637000 ㊱ Kayann Robb  
181-35 8/7/1972  
OR.88-67 9/20/2001  
0.88 ac p.5/143
- 0600071000 ㊲ Michael J. and Stephanie M. Williams  
OR.203-3175 4/15/2008  
0.733 ac p.19-383
- 0600071001 ㊳ Michael J. and Stephanie M. Williams  
OR.203-3194 4/15/2008  
0.509 ac p.19-383
- 0600274005 ㊴ Glenn and Arlene Miller  
OR.181-731 6/28/2005  
1.08 ac p.19-438
- 0600915000 ㊵ Phillip R. Yoder, Linda E. Yoder,  
Dale E. Yoder, Wilbur D. Yoder  
OR.194-892 1/12/2007  
0.612 ac p.5-73

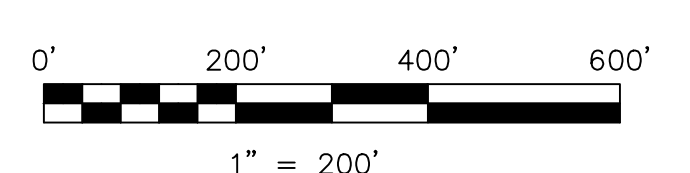


(H-33)  
Sec. 15

Berlin Twp.

- ① Tranquil Acres Allotment No.1  
Plat 13-178 Platted 1/29/1993
- 0601198005 ② George and Lidia Collet  
258-837 2/4/1993  
1.011 ac
- 0601198006 ③ Cornel and Elena Marza  
264-193 4/25/1994  
264-195 4/25/1994  
1.026 ac
- 0601198007 ④ Ellis and Linda Sue Troyer  
279-760 9/4/1997  
279-763 9/4/1997  
1.0 ac
- 0601198008 ⑤ Silvia Tomicler  
OR.19-215 10/29/1998  
OR.19-218 10/29/1998  
1.0 ac
- ⑥ Tranquil Acres Allotment No.1 First Addition  
Plat 2-504 Platted 5/27/2011

S.F.T. new survey required  
for next transfer



LET IT BE KNOWN THIS MAP HAS BEEN PREPARED AS A REFERENCE GUIDE TO PROPERTY OWNERSHIP. WE BELIEVE THIS INFORMATION TO BE CORRECT AND CURRENT, HOWEVER IT IS NOT INTENDED FOR ANY LEGAL USE, WHETHER IT BE IN SALES, TRANSFERS, TRADES, LEASES OF ANY TYPE, ETC., AND DO NOT ACCEPT RESPONSIBILITY FOR ERRORS OF ANY NATURE OR OMISSIONS CONTAINED HEREIN.

Last Revision: 12/27/2012

**T-9, R-6, Section 14  
HARDY TWP.  
HOLMES COUNTY, OHIO**

# H-38