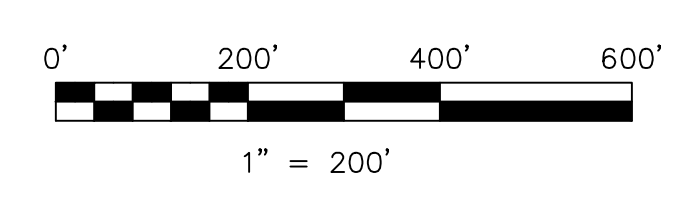


MILLERSBURG
see Millersburg Map
for detail of this area

NOTE:
THE LOTS AND/OR PARCELS LOCATED WITHIN THE VILLAGE
OF MILLERSBURG ARE PROVIDED AS A REFERENCE GUIDE
ONLY. PLEASE SEE MILLERSBURG MAPS FOR DETAILED
INFORMATION ON THESE PARCELS.

Last Revision: 8/16/2012

T-9, R-7, Section 12
Lot 41, 1st Qtr
HARDY TWP.
HOLMES COUNTY, OHIO



LET IT BE KNOWN, THIS MAP HAS BEEN PREPARED AS A REFERENCE
GUIDE TO PROPERTY OWNERSHIP. WE BELIEVE THIS INFORMATION TO
BE CORRECT AND CURRENT, HOWEVER IT IS NOT INTENDED FOR ANY
LEGAL USE, WHETHER IT BE IN SALES, TRANSFERS, TRADES, LEASES
OF ANY TYPE, ETC., AND DO NOT ACCEPT RESPONSIBILITY FOR
ERRORS OF ANY NATURE OR OMISSIONS CONTAINED HEREIN.

S.F.T. new survey required
for next transfer

- 0601229000 ① UHL JAMES A. ?
DV.66-306 7/24/1902
0.03 ac S.F.T.
- 0600161000 ② HOLMES FIRE DISTRICT NO. 1
235-830 7/10/1987
0.203 ac p.10-242
- 0600993000 ③ EAST HOLMES VETERINARY PROPERTIES, LLC
OR.211-2317 6/25/2009
OR.211-2319 6/25/2009
0.28 ac p.4-169
- 0600590000 ④ PATTEN PATRICIA A.
195-47 7/19/1976
OR.2017-614 10/2/1998
0.34 ac p.4-116
- 0601230000 ⑤ HIPPI LIMITED PARTNERSHIP
271-487 12/28/1995
0.982 ac S.F.T.
- 0600990000 ⑥ Susan A. Rechella, trustee
OR.212-468 7/17/2009
0.131 ac p.19-1545
- 0601238000 ⑦ J.D. Hipp Farms, Ltd.
OR.185-1909 12/19/2005
0.657 ac p.2-413
- 0600836000 ⑧ LM ENTERPRISES
267-39 12/28/1994
0.564 ac p.7-761
- 0600488001 ⑨ Carole J. Norman, trustee
OR.212-409 7/16/2009
OR.212-415 7/16/2009
0.548 ac p.12-744
- 0601222001 ⑩ J.D. Hipp Farms, Ltd.
OR.185-1897 12/19/2005
0.093 ac p.2-413
- 0600306000 ⑪ J.D. Hipp Farms, Ltd.
OR.200-1234 10/17/2007
0.231 ac p.19-1165
- 0601222002 ⑫ J.D. Hipp Farms, Ltd.
OR.185-1897 12/19/2005
0.345 ac p.2-413
- 0600306002 ⑬ J.D. Hipp Farms, Ltd.
OR.186-1761 2/3/2006
0.301 ac p.19/620

H-22