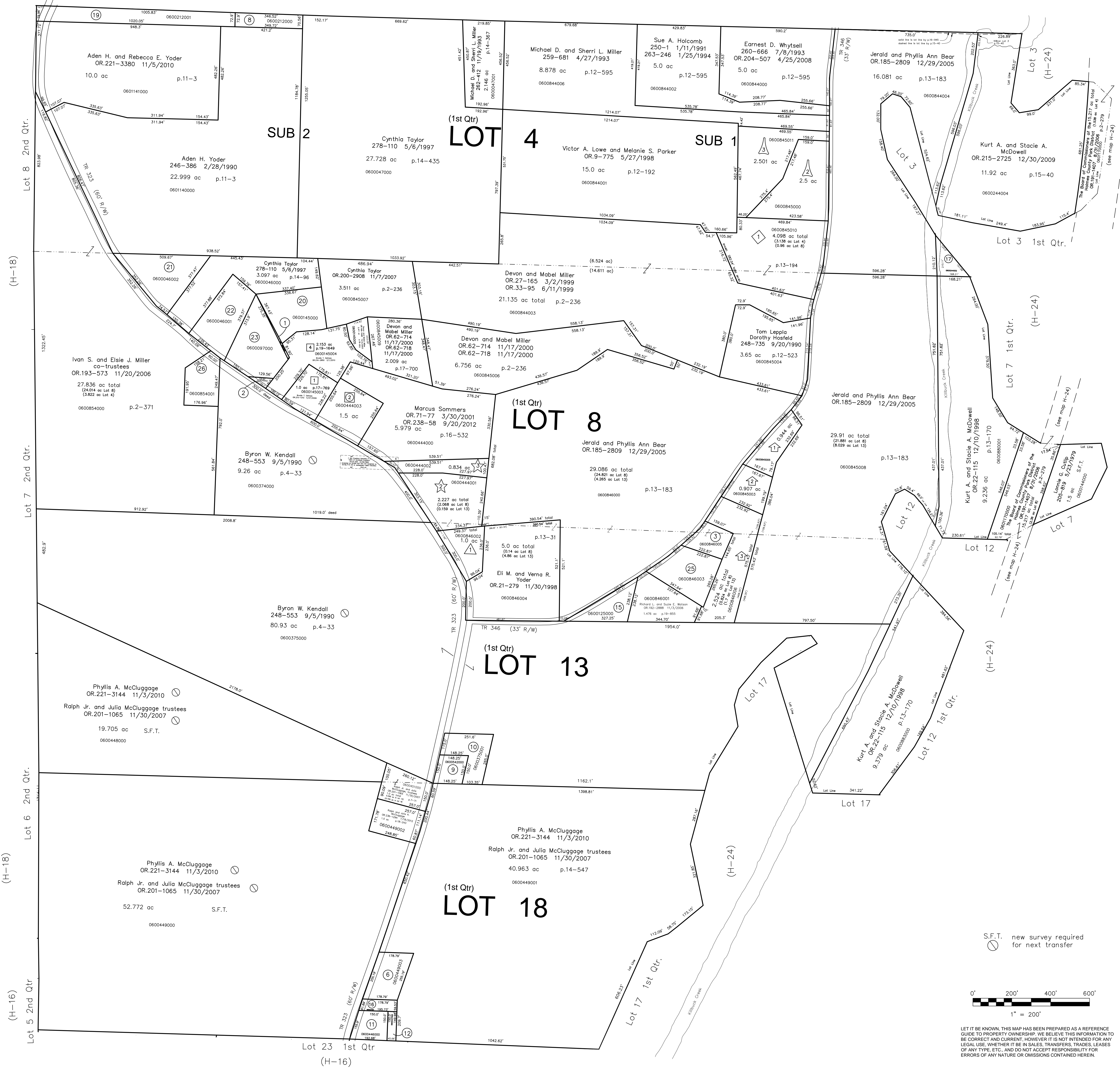


- 0600145001 ① MAYNARD HARVEY L. AND LYNN S. 237-913 1/29/1988 0.041 ac p.10-896
- 0600145002 ② MAYNARD HARVEY L. AND LYNN S. 237-913 1/29/1988 0.082 ac p.10-896
- 0600846005 ③ STROUSE JAMES D. AND LOIS E. 241-151 11/4/1988 0.649 ac p.13-31
- ④ not used
- ⑤ Not used
- 0600449003 ⑥ MCCLUGGAGE DAVID OR.0168-1414 11/24/2003 OR.0169-978 1/16/2004 1.0 ac p.18-813
- ⑦ Not used
- 0600212000 ⑧ MARTIN DAVID N. AND JAMES N. OR.0149-530 5/16/2003 0.573 ac p.12-922
- 0600542000 ⑨ Wayne E. Miller OR.193-3073 12/22/2006 0.50 ac p.5-14
- 0600375001 ⑩ Wayne E. Miller OR.193-3073 12/22/2006 1.0 ac p.14-502
- 0600448000 ⑪ Phyllis A. McCluggage OR.221-3154 11/3/2010 0.59 ac p.3-558
- 0600447000 ⑫ Phyllis A. McCluggage OR.221-3154 11/3/2010 0.59 ac p.3-558
- ⑬ not used
- ⑭ Not used
- 0600125000 ⑮ David E. and Suzanne E. Peight OR.184-2079 11/7/2005 0.872 ac p.7-247
- 0600447001 ⑯ MCCLUGGAGE DAVID OR.0168-1418 11/26/2003 0.256 ac p.18-813
- 0600244002 ⑰ Kurt A. and Stacie A. McDowell OR.215-2725 12/30/2009 0.405 ac p.15-40
- ⑱ not used
- 0600212001 ⑲ MOSSOR JEROD J. LANE, SAMANTHY E. 284-219 4/26/1994 1.794 ac p.12-922
- 0600145000 ⑳ Cynthia Taylor OR.200-2908 11/7/2473 1.53 ac p.14-662
- 0600046002 ㉑ FARLEY DEWEY R. AND SARITA J. 245-715 12/19/1989 1.865 ac p.12-352
- 0600046001 ㉒ TAYLOR CYNTHIA OR.0091-451 10/25/2001 1.665 ac p.12-352
- 0600097000 ㉓ MAYNARD HARVEY L. AND LYNN S. 219-816 3/17/1983 1.748 ac p.8-609
- ⑳ not used
- 0600846003 ㉔ STROUSE LOIS E. AND JAMES D. 232-174 8/29/1986 238-885 4/28/1988 1.3 ac p.10-598
- 0600854001 ㉕ Richard and Lori Edwards OR.193-578 11/20/2006 1.000 ac p.19-889



- ① George F. Dawson Allotment No.1 Plat 13-198 Platted 7/19/1993
- ② EDMONDSON SUSAN E. 281-460 11/19/1997 1.0 ac
- ③ George F. Dawson Allotment No.2 Plat 17-833 Platted 3/28/2001
- ④ Howard Hartsell OR.237-2300 9/10/2012 1.5 ac
- ⑤ LEVI A. MILLER ALLOTMENT No.1 Plat 13-194 Platted 6/23/1993
- ⑥ BROWN SCOTT AND WENDY 268-410 5/2/1995 4.098 ac
- ⑦ LEVI A. MILLER ALLOTMENT No.2 Plat 15-16 Platted 9/27/1993
- ⑧ WHYTSSELL DAVID A. AND CHERYL L. 261-791 9/28/1993 2.5 ac
- ⑨ LOWE VICTOR A. PARKER, MELANIE S. OR.0009-775 5/27/1998 2.501 ac
- ⑩ Replatting and Renumbering of Gerald W. McBride Allotment No.1 Plat 16-864 Platted 9/18/1998
- ⑪ MCBRIDE GERALD W. AND BERTHA M. 209-436 5/8/1980 278-895 9/11/1997 2.227 ac
- ⑫ SOMMERS MARCUS OR.71-77 3/30/2001 OR.238-58 9/20/2012 0.834 ac
- ⑬ Secrist Subdivision Plat 17-769 Platted 1/24/2001 LOT 1
- ⑭ Secrist Subdivision - First Addition Replat of Lot 3 and Additional Lands Plat 19-1649 Platted 2-23/2010 LOT 4
- ⑮ Watson-Strouse Subdivision Plat 17-688 Platted 11/7/2000
- ⑯ STROUSE STEPHANIE E. OR.010-283 4/17/2002 0.944 ac
- ⑰ STROUSE JAMES D. AND LOIS E. OR.0063-134 11/28/2000 0.907 ac
- ⑱ PATTERSON JAMES L. AND ROSEL A. OR.0065-100 1/3/2001 2.524 ac

Last Revision: 9/20/2012

**T-9, R-7, 1st QTR.
 LOTS 4, 8, 13, 18
 HARDY TWP.
 HOLMES COUNTY, OHIO**

H-17