

(H-10)  
Lot 6 2nd Qtr

(H-11)  
Lot 12 2nd Qtr.

(H-17)  
Lot 18 1st Qtr

(H-10)  
Lot 13 2nd Qtr.

Lot 14 2nd Qtr.

Lot 22 1st Qtr.  
(H-23)

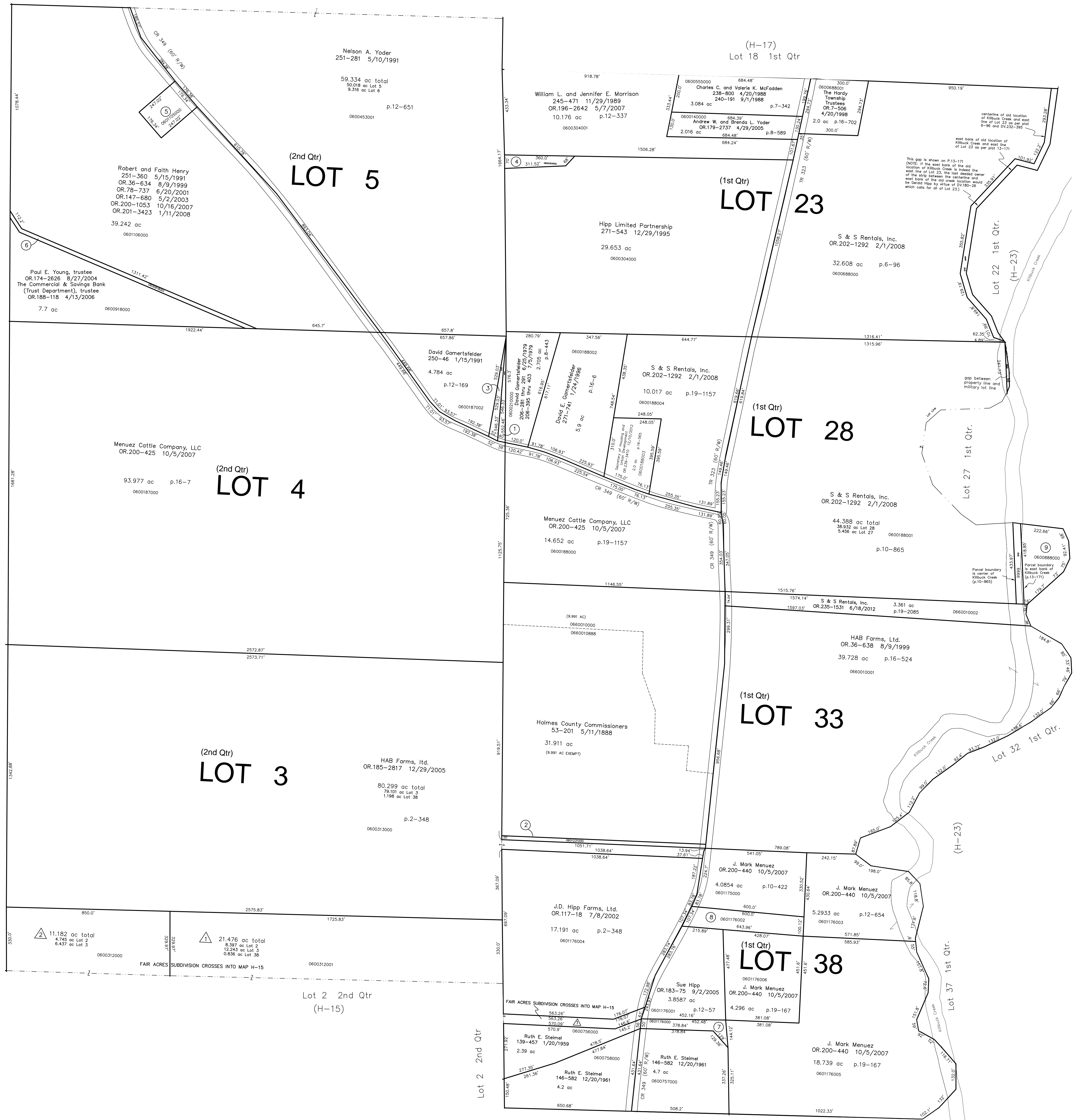
Lot 27 1st Qtr.

(H-23)

Lot 37 1st Qtr.

Lot 32 1st Qtr.

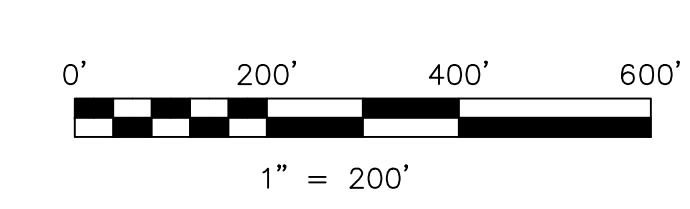
- 0600211000 ① GARNITSFELDER DAVID  
206-281 THRU 291 6/25/1979  
206-395 THRU 403 7/5/1979  
0.249 ac p.8-443
- 0601231000 ② UNKNOWN  
DV.71-398 4/5/1906  
20 R. STRIP
- 0600187001 ③ GARNITSFELDER DAVID  
238-742 4/13/1988  
215-657 12/8/1981  
0.303 ac p.10-936
- 0600304002 ④ William L. and Jennifer E. Morrison  
253-1 10/3/1991  
OR.196-2642 5/7/2007  
0.463 ac p.12-760
- 0601105000 ⑤ Robert A. and Faith R. Henry  
OR.199-1519 8/30/2007  
1.0 ac p.10-160
- 0600918001 ⑥ PAUL E. YOUNG, TRUSTEE  
OR.0174-2626 8/27/2004  
The Commercial & Savings Bank  
(Trust Department), trustee  
OR.0188-118 4/13/2006  
3 STRIP S.F.T.
- 0601176000 ⑦ HIPP, LTD.  
OR.0168-3027 12/16/2003  
0.622 ac p.2-348
- 0601176002 ⑧ J. Mark Menezes  
OR.200-440 10/5/2007  
1.4279 ac p.12-135
- 0600888000 ⑨ MCDOWELL KURT A. AND STACIE A.  
257-417 10/5/1992  
1.732 ac p.13-171



Fair Acres Subdivision  
Plot 18-385 Platted 9/16/2002

- 0600312001 ① FAIR MICHAEL L. AND KATHLEEN M.  
OR.0123-583 9/24/2002  
21.476 ac
- 0600312000 ② FAIR MATTHEW J.  
OR.0123-585 9/24/2002  
11.182 ac

Last Revision: 12/10/2012



S.F.T. new survey required  
for next transfer

LET IT BE KNOWN, THIS MAP HAS BEEN PREPARED AS A REFERENCE  
GUIDE TO PROPERTY OWNERSHIP. WE BELIEVE THIS INFORMATION TO  
BE CORRECT AND CURRENT. HOWEVER, IT IS NOT INTENDED FOR ANY  
LEGAL USE, WHETHER IT BE IN SALES, TRANSFERS, TRADES, LEASES  
OF ANY TYPE, ETC., AND DO NOT ACCEPT RESPONSIBILITY FOR  
ERRORS OF ANY NATURE OR OMISSIONS CONTAINED HEREIN.

**T-9, R-7**  
**1st QTR. LOTS 23, 28, 33, 38**  
**2nd QTR. LOTS 3, 4, 5**  
**HARDY TWP.**  
**HOLMES COUNTY, OHIO**

# H-16