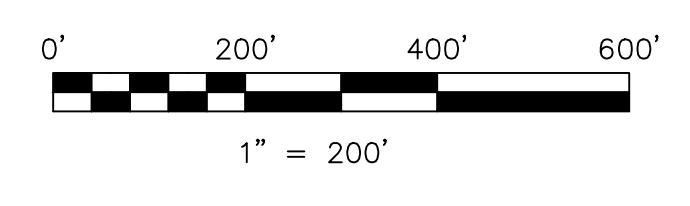


0600178008	1 Paul Ray and Janice M. Hoover OR.219-2223 7/28/2010 5.00 ac total p.16-572 (4.921 ac Lot 20 + 0.079 ac Lot 28)	0600000000	6 not used	0600151001	11 Abe D. Miller 1/2 int; Paul A. Miller 1/4 int; Ruth E. Miller 1/4 int OR.194-625 1/9/2007 1.981 ac total p.19-309 (1.0 ac Lot 27 + 0.981 ac Lot 28)
0600178009	2 Wooded Acres Ltd. OR. 59-275 9/26/2000 30.022 ac total p.16-572 (30.177 ac Lot 20 + 0.045 ac Lot 28)	0600592000	7 Donald T. Arnold OR.199-3127 9/25/2007 0.471 ac p.19-1143	0600174000	12 Ronald M. Salvall OR. 211-3439 7/8/2009 0.65 ac p. 7-60
0600178005	3 Andy Ray and Dena Miller OR.167-2470 10/30/2003 OR.179-3207 5/5/2005 5.000 ac total p.16-572 (4.482 ac Lot 20 + 0.518 ac Lot 28)	0600633000	8 Duane C. Lacey and Ruby D. Reber 281-982 12/19/1997 1.0 ac p.7-192	0600314001	13 John P. and Janet D. Mason 254-154 1/15/1992 OR.33-826 6/22/1999 11.767 ac total p.13-146 (9.419 ac Lot 32 + 2.348 ac Lot 33)
0600443001	4 Joel J. Yoder OR.206-2001 9/4/2008 1.654 ac p.17-234	0600000000	9 not used	0600426000	10 Clifford Conner OR.203-1785 3/27/2008 1.75 ac p.14-728
0601216000	5 Big Country Estates, Limited 269-902 8/16/1995 0.656 ac p.15-58				

Last Revision: 12/27/2012

**T-9, R-7, 2nd Qtr.
LOTS 28, 29, 30, 33, 34, 35
HARDY TWP.
HOLMES COUNTY, OHIO**



S.F.T. new survey required for next transfer

LET IT BE KNOWN, THIS MAP HAS BEEN PREPARED AS A REFERENCE GUIDE TO PROPERTY OWNERSHIP. WE BELIEVE THIS INFORMATION TO BE CORRECT AND CURRENT. HOWEVER IT IS NOT INTENDED FOR ANY LEGAL USE, WHETHER IT BE IN SALES, TRANSFERS, TRADES, LEASES OF ANY TYPE, ETC., AND DO NOT ACCEPT RESPONSIBILITY FOR ERRORS OF ANY NATURE OR OMISSIONS CONTAINED HEREIN.

H-04