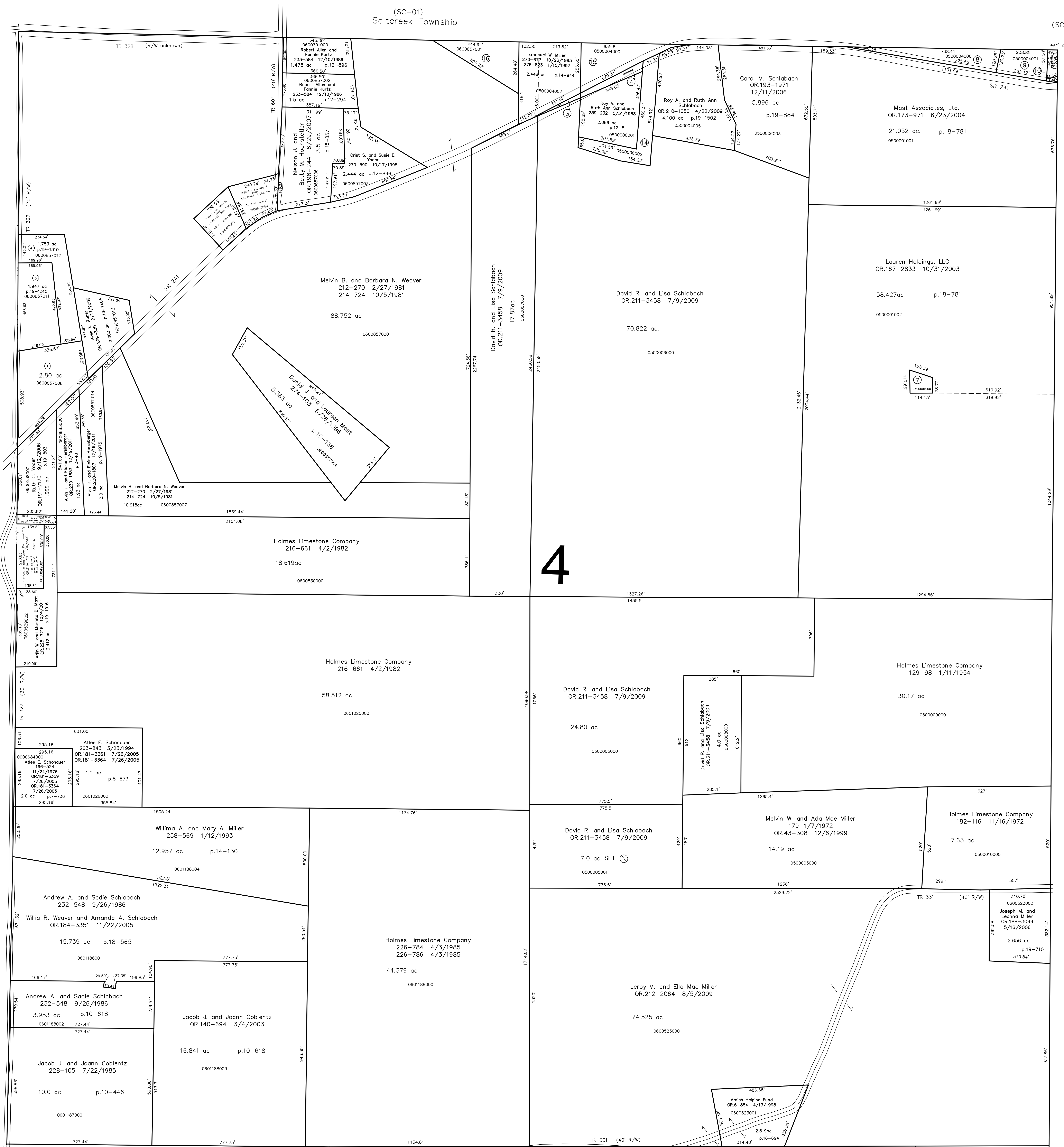


- ① not used
- ② not used
- ③ David R. and Lisa Schlabach
OR.211-3458 7/9/2009
0.071 ac p.14-978
- ④ Roy A. and Ruth Ann Schlabach
271-529 12/18/1995
0.276 ac p.14-978
- ⑤ not used
- ⑥ not used
- ⑦ Most Associates
215-983 1/12/1982
273-455 5/13/1996
0.261 ac
- ⑧ Allen W. and Esther Miller
279-198 7/24/1997
1.079 ac p.16-491
- ⑨ Roy J. and Elmina Miller
257-595 10/19/1992
0.793 ac p.14-82
- ⑩ Roy J. and Elmina Miller
183-748 5/9/1973
186-184 1/22/1974
258-166 12/11/1992
0.16 ac
- ⑪ not used
- ⑫ not used
- ⑬ not used
- ⑭ Roy A. and Ruth Ann Schlabach
OR.30-942 5/9/1999
1.439 ac p.17-94
- ⑮ Jonas W. and Anna Miller
279-26 7/14/1997
279-30 7/14/1997
1.432 ac
- ⑯ Board of Trustees
Scienc View Parshial School
239-621 7/6/1988
1.351 ac p.12-28

(H-35)
Sec. 5



Berlin Twp.
(B-05)

MB Acres Subdivision
Plat 19-725 Platted 6/5/2006

- ① Emma J. Troyer
OR.190-160 6/29/2006
2.80 ac p.19-725
- ② replatted P.19-1310 5/20/2008

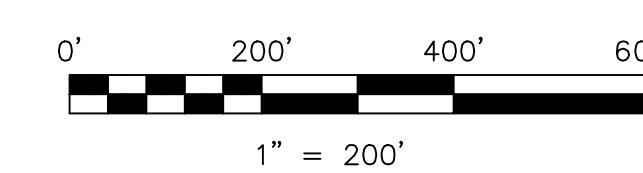
MB Acres Subdivision Replat of Lot 2
and Additional Lands
Plat 19-1310 Platted 5/21/2008

- ③ Wallace Zook and Mary Zook and Karen Zook
OR.205-391 6/17/2008
1.947 ac p.19-1310
- ④ Karen Zook
OR.205-388 6/17/2008
1.753 ac p.19-1310

(H-39)
Sec. 7

S.F.T. new survey required
for next transfer

Last Revision: 12/19/2011



LET IT BE KNOWN, THIS MAP HAS BEEN PREPARED AS A REFERENCE
GUIDE TO PROPERTY OWNERSHIP. WE BELIEVE THIS INFORMATION TO
BE CORRECT AND CURRENT, HOWEVER IT IS NOT INTENDED FOR ANY
LEGAL USE, WHETHER IT BE IN SALES, TRANSFERS, TRADES, LEASES
OF ANY TYPE, ETC., AND DO NOT ACCEPT RESPONSIBILITY FOR
ERRORS OF ANY NATURE OR OMISSIONS CONTAINED HEREIN.

**T-9, R-6, Section 4
HARDY TWP.
HOLMES COUNTY, OHIO**

H-40