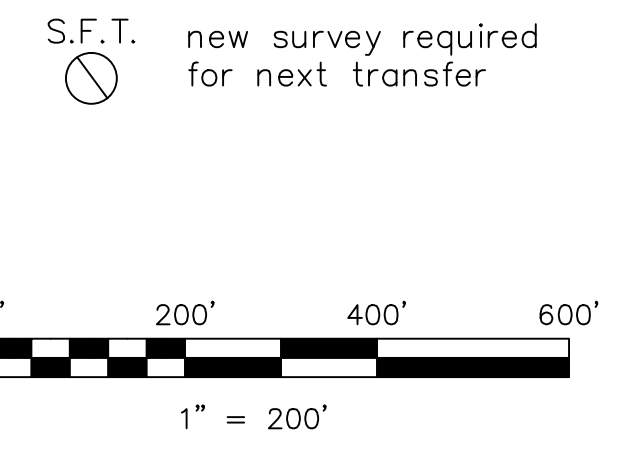
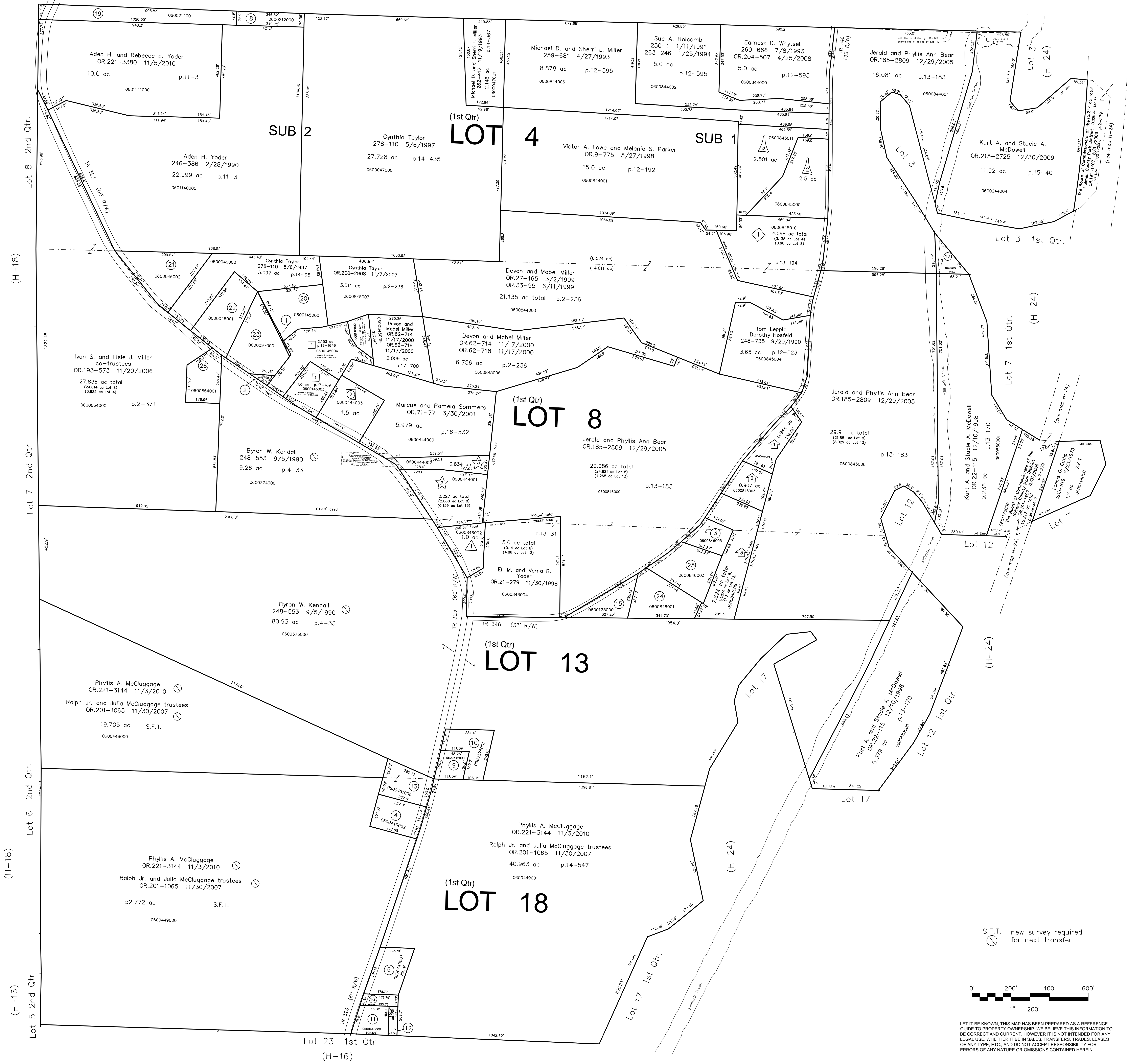


- 0600145001 ① MAYNARD HARVEY L. AND LYNN S. 237-913 1/29/1988 0.041 ac p.10-896
- 0600145002 ② MAYNARD HARVEY L. AND LYNN S. 237-913 1/29/1988 0.082 ac p.10-896
- 0600846003 ③ STROUSE JAMES D. AND LOIS E. 241-151 11/4/1988 0.649 ac p.13-31
- 0600449002 ④ MCCLUGGAGE CHERYL ANN OR.0108-333 3/28/2002 1.0 ac p.18-243
- ⑤ Not used
- 0600449003 ⑥ MCCLUGGAGE DAVID OR.0168-1414 11/24/2003 OR.0169-978 1/6/2004 1.0 ac p.18-813
- ⑦ Not used
- 0600212000 ⑧ MARTIN DAVID N. AND JAMES N. OR.0148-530 5/16/2003 0.573 ac p.12-922
- 0600542000 ⑨ Wayne E. Miller OR.193-3073 12/22/2006 0.50 ac p.5-14
- 0600375001 ⑩ Wayne E. Miller OR.193-3073 12/22/2006 1.0 ac p.14-502
- 0600446000 ⑪ Phyllis A. McCluggage 147-381 3/29/1962 OR.221-3154 11/3/2010 0.59 ac p.3-558
- 0600447000 ⑫ Phyllis A. McCluggage 184-417 6/28/1973 OR.221-3154 11/3/2010 0.154 ac p.7-70
- 0600451000 ⑬ Ralph Jr. and Julia McCluggage, trustees OR.201-1065 11/30/2007 1.0 ac total (0.705 ac Lot 18 + 0.295 ac Lot 13)
- ⑭ Not used
- 0600125000 ⑮ David E. and Suzanne E. Peight OR.184-2079 11/7/2005 0.872 ac p.7-247
- 0600447001 ⑯ MCCLUGGAGE DAVID OR.0168-1416 11/26/2003 0.256 ac p.18-813
- 0600244002 ⑰ Kurt A. and Stacie A. McDowell OR.215-2725 12/30/2009 0.409 ac p.15-40
- 0000000000 ⑱ not used
- 0600212001 ⑲ MOSSOR, JEROD J. LANE, SAMANTHY E. 264-219 4/26/1994 1.794 ac p.12-922
- 0600145000 ⑳ Cynthia Taylor OR.200-2908 11/7/2473 1.53 ac p.14-662
- 0600046002 ㉑ FARLEY DEWEY R. AND SARITA J. 245-715 12/19/1989 1.865 ac p.12-352
- 0600046001 ㉒ TAYLOR CYNTHIA OR.0091-451 10/25/2001 1.665 ac p.12-352
- 0600097000 ㉓ MAYNARD HARVEY L. AND LYNN S. 219-816 3/17/1983 1.746 ac p.8-609
- 0600846001 ㉔ Richard L. and Susie E. Watson OR.192-2888 11/3/2006 1.476 ac p.19-855
- 0600846003 ㉕ STROUSE LOIS E. AND JAMES D. 232-174 8/29/1986 238-885 4/26/1988 1.5 ac p.10-596
- 0600854001 ㉖ Richard and Lori Edwards OR.193-578 11/20/2006 1.000 ac p.19-869



LET IT BE KNOWN, THIS MAP HAS BEEN PREPARED AS A REFERENCE GUIDE TO PROPERTY OWNERSHIP. WE BELIEVE THIS INFORMATION TO BE CORRECT AND CURRENT, HOWEVER IT IS NOT INTENDED FOR ANY LEGAL USE, WHETHER IT BE IN SALES, TRANSFERS, TRADES, LEASES OF ANY TYPE, ETC., AND DO NOT ACCEPT RESPONSIBILITY FOR ERRORS OF ANY NATURE OR OMISSIONS CONTAINED HEREIN.

Last Revision: 11/5/2010

**T-9, R-7, 1st QTR.
LOTS 4, 8, 13, 18
HARDY TWP.
HOLMES COUNTY, OHIO**

H-17

- ① George F. Dawson Allotment No.1 Plat 13-198 Platted 7/19/1993
- 0600846002 ② EDMONDSON SUSAN E. 281-460 11/19/1997 1.0 ac
- ③ George F. Dawson Allotment No.2 Plat 17-833 Platted 3/28/2001
- 0600444003 ④ DAWSON GEORGE E. AND BARBARA J. OR.0071-2 3/30/2001 1.3 ac

- ⑤ Levi A. Miller Allotment No.1 Plat 13-194 Platted 6/29/1993
- 0600845010 ⑥ BROWN SCOTT AND WENDY 268-410 5/2/1995 4.098 ac
- ⑦ Levi A. Miller Allotment No.2 Plat 15-16 Platted 9/27/1993
- 0600845000 ⑧ WHYTESELL DAVID A. AND CHERYL L. 281-751 9/28/1993 2.5 ac
- 0600845011 ⑨ LOWE, VICTOR A. PARKER, MELANIE S. OR.0009-775 5/27/1998 2.501 ac

- ⑩ Replotting and Renumbering of Gerald W. McBride Allotment No.1 Plat 16-864 Platted 9/18/1998
- 0600444001 ⑪ MCBRIDE GERALD W. AND BERTHA M. 209-436 5/8/1980 278-895 9/11/1997 2.227 ac
- 0600444002 ⑫ SOMMERS MARCUS AND PAMELA OR.0071-77 3/30/2001 0.834 ac

- ⑬ Sechrist Subdivision Plat 17-769 Platted 1/24/2001 LOT 1
- ⑭ Sechrist Subdivision - First Addition Replat of Lot 3 and Additional Lands Plat 19-1649 Platted 2-23/2010 LOT 4

- ⑮ Watson-Strouse Subdivision Plat 17-688 Platted 11/7/2000
- 0600845005 ⑯ STROUSE STEPHANIE E. OR.0110-283 4/17/2002 0.944 ac
- 0600845003 ⑰ STROUSE JAMES D. AND LOIS E. OR.0063-134 11/28/2000 0.907 ac
- 0600846006 ⑱ PATTERSON JAMES L. AND ROSEL A. OR.0065-100 1/3/2001 2.524 ac