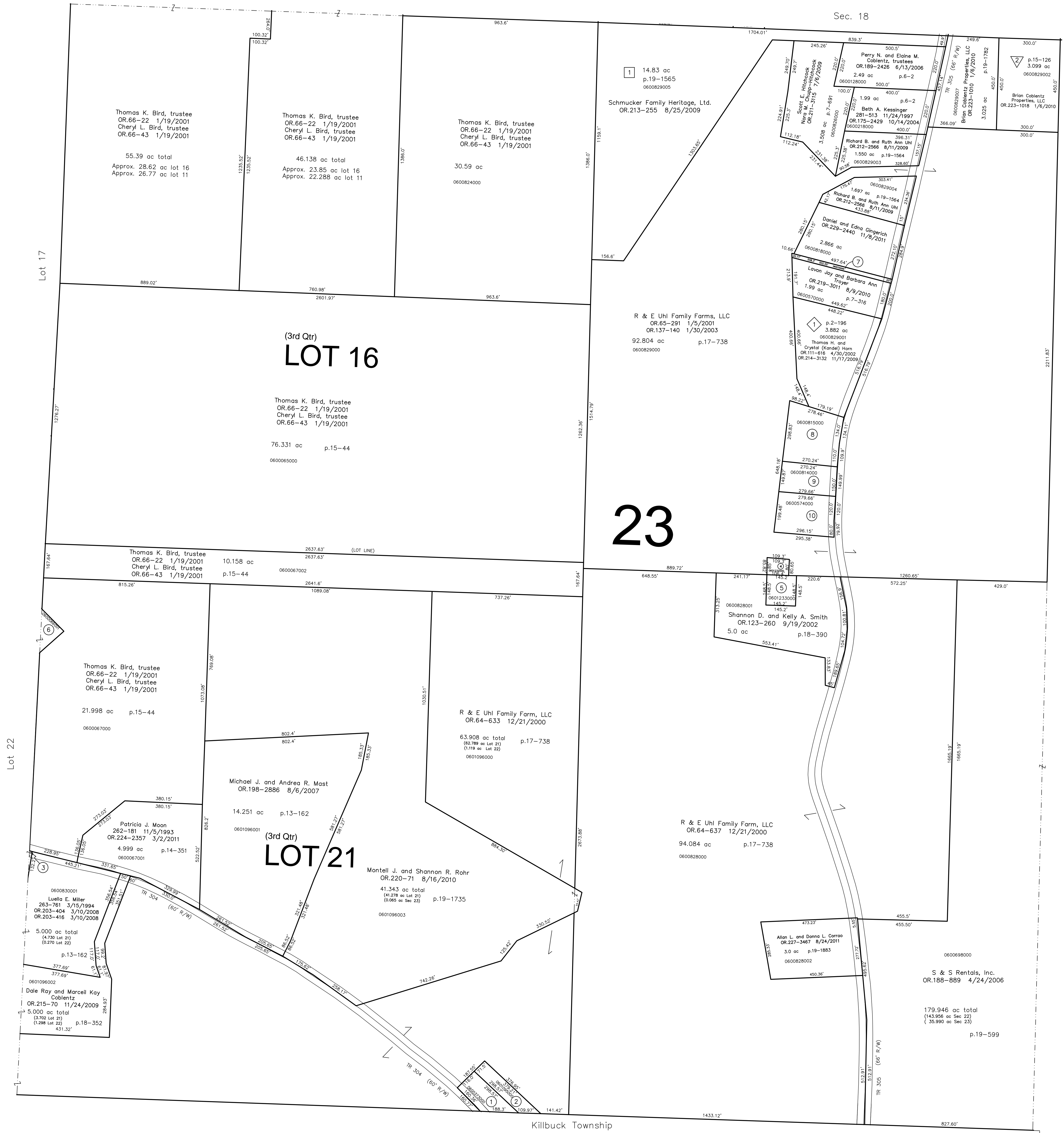


- 0600373000 ① KELLING WILMA R.
173-248 3/11/1970
205-85 3/6/1979
0.64 ac p.2-31
- 0601095000 ② GINGERICH ALLEN AND WILMA
219-772 3/8/1983
0.5562 ac p.10-105
- 0600345000 ③ BRAUN EDWARD A. AND TERESA
238-832 4/25/1988
0.0258 ac p.8-626
- 0601232000 ④ UHL RICHARD E., RALPH C., AND ROBERT R. ?
128-403 8/24/1953
0.206 ac
- 0601233000 ⑤ UHL JAMES A. AND ELIZABETH TRUSTEES ?
DV.63-96 6/28/1899
0.50 ac SR 4-123
- 0600524000 ⑥ KEELER RICKY A.
267-552 2/9/1995
0.275 ac p.14-726
- 0600720000 ⑦ Daniel and Edna Gingerich
OR.229-2440 11/8/2011
0.23 ac p.8-679
- 0600815000 ⑧ STROUSE THOMAS H. AND SHIRLEY A.
245-96 10/19/1989
1.68 ac p.5-158
- 0600814000 ⑨ ST. JOHN PAUL A. AND PAMELA S.
269-424 7/17/1995
0.945 ac p.7-127
- 0600574000 ⑩ STEPHENS LOUIS E. AND SHERRI S.
270-165 9/6/1995
1.31 ac p.7-270

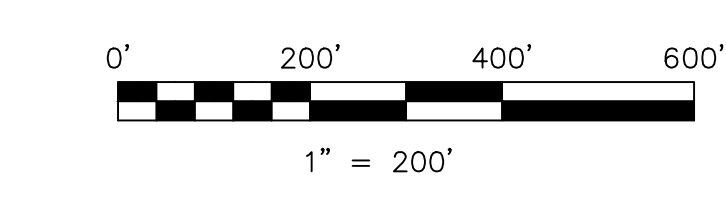
(H-7)
Hardy Twp.



Lot 22

Sec. 22
(H-20)
Hardy Twp.

- Uhl Allotment No.1
Plat 2-196 Platted 3/23/1987
- Uhl Allotment No.2
Plat 15-126 Platted 4/29/1997
- Uhl Cottage Subdivision
Plat 19-1565 Platted 8/12/2009



S.F.T. new survey required
for next transfer

LET IT BE KNOWN, THIS MAP HAS BEEN PREPARED AS A REFERENCE
GUIDE TO PROPERTY OWNERSHIP. WE BELIEVE THIS INFORMATION TO
BE CORRECT AND CURRENT, HOWEVER IT IS NOT INTENDED FOR ANY
LEGAL USE, WHETHER IT BE IN SALES, TRANSFERS, TRADES, LEASES
OF ANY TYPE, ETC., AND DO NOT ACCEPT RESPONSIBILITY FOR
ERRORS OF ANY NATURE OR OMISSIONS CONTAINED HEREIN.

Last Revision: 11/8/2011

T-9, R-7, Sec. 23
3rd Qtr., LOTS 16, 21
HARDY TWP.
HOLMES COUNTY, OHIO

H-13