

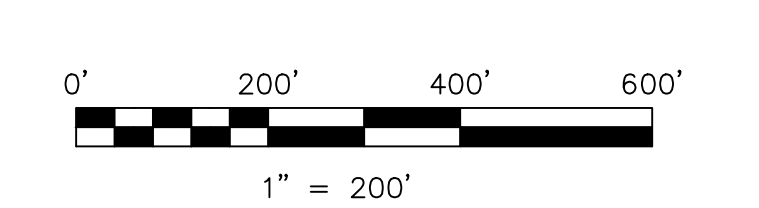


- ◆ South Fork Allotment No. 1
Plat 2-266 Platted 12/26/1996
- 0600179002 ◆ Wesley D. and Cindie L. Hoffman
OR. 65-803 1/17/2001
OR. 162-731 8/29/2003
1.102 ac p.2-266
- 0600179003 ◆ Linnea M. Kuckelheim
OR. 49-798 4/4/2000
OR. 174-2515 8/26/2004
OR. 174-2518 8/26/2004
1.098 ac p.2-266
- 0600179004 ◆ Wesley D. and Cindie L. Hoffman
OR. 65-805 1/17/2001
1.098 ac p.2-266
- 0600179005 ◆ Wesley D. and Cindie L. Hoffman
OR. 56-816 8/11/2000
1.102 ac p.2-266
- 0600179006 ◆ Wesley D. and Cindie L. Hoffman
OR. 162-731 8/29/2003
1.298 ac p.2-266
- 0600179007 ◆ Joe A. and Kimberly K. Freewalt
OR. 196-3231 5/14/2007
1.302 ac p.2-266
- 0600179009 ◆ Jerry and Cheryl Galbreath
OR. 109-628 4/10/2002
1.002 ac p.2-266
- ◆ Replat of Lots 7 & 9
Plat 17-778 Platted 2/6/2001
- 0600179008 ◆ William S. and Dawne L. O'Donnel
OR. 68-742 3/1/2001
1.667 ac p.17-778
- 0600179010 ◆ Thomas A. and Penelope S. York
OR. 180-3489 6/20/2005
0.333 ac p.17-778

- 0600151001 ○ Abe D. Miller 1/2 int;
Paul A. Miller 1/4 int;
Ruth E. Miller 1/4 int
OR. 194-625 1/9/2007
1.981 ac total P.19-909
(1.0 ac Lot 27 + 0.981 ac Lot 28)

Last Revision: 5/14/2007

**T-9, R-7, 2nd Qtr.
LOTS 26, 27, 36, 37
HARDY TWP.
HOLMES COUNTY, OHIO**



S.F.T. new survey required
○ for next transfer

LET IT BE KNOWN, THIS MAP HAS BEEN PREPARED AS A REFERENCE GUIDE TO PROPERTY OWNERSHIP. WE BELIEVE THIS INFORMATION TO BE CORRECT AND CURRENT. HOWEVER IT IS NOT INTENDED FOR ANY LEGAL USE, WHETHER IT BE IN SALES, TRANSFERS, TRADES, LEASES OF ANY TYPE, ETC., AND DO NOT ACCEPT RESPONSIBILITY FOR ERRORS OF ANY NATURE OR OMISSIONS CONTAINED HEREIN.

H-05