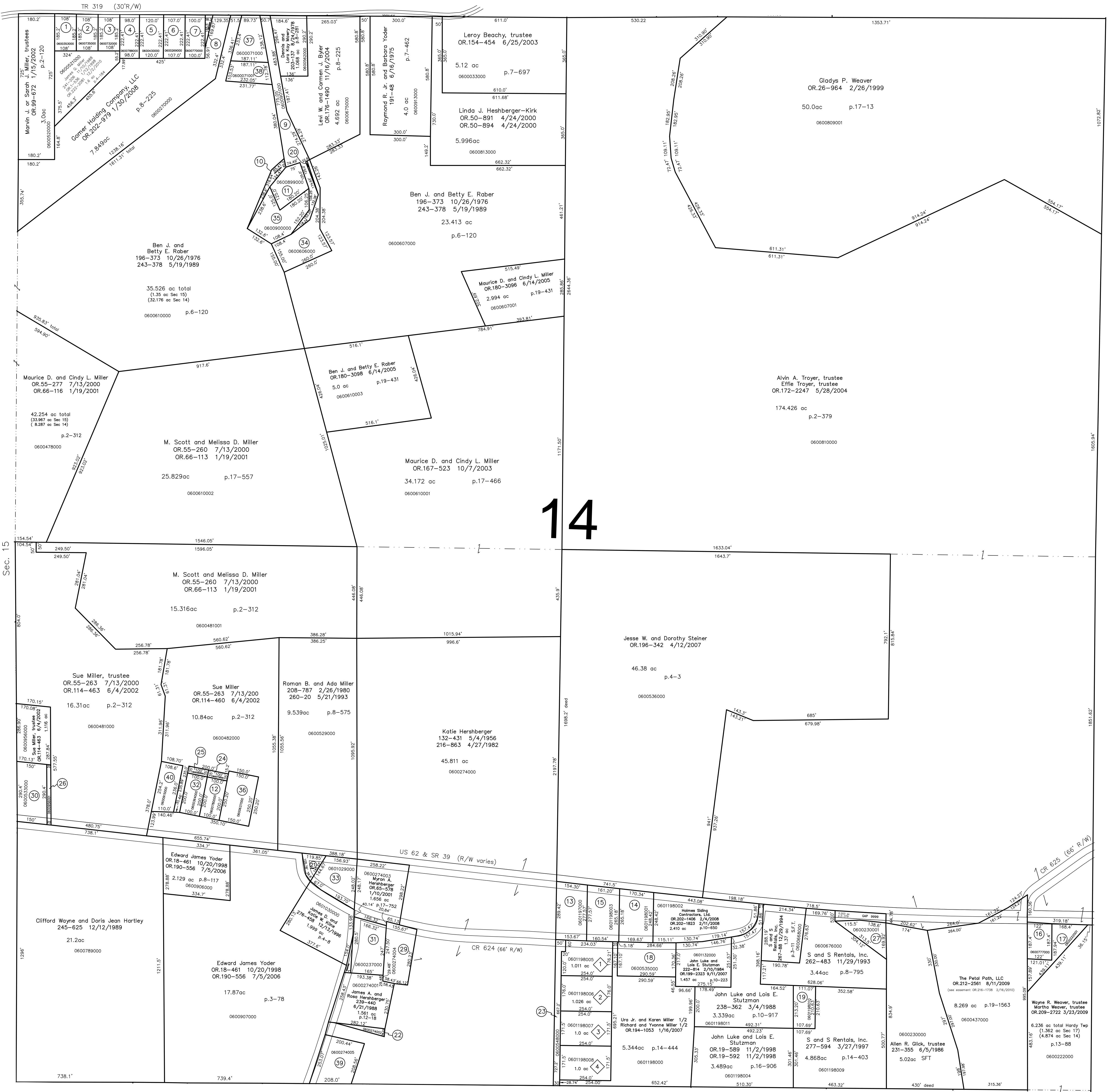


- 0600353000 ① Michael R. Hoxworth
OR.98-534 12/18/2001
0.50 ac p.184
- 0600735000 ② W. Tom Terwilliger
OR.180-467 5/19/2005
OR.210-168 4/7/2009
0.459 ac p.8-93
- 0600732000 ③ W. Tom Terwilliger
OR.180-467 5/19/2005
OR.210-168 4/7/2009
0.459 ac p.8-93
- 0600788000 ④ Paul and Peggy Swartzentruber
199-344 9/9/1977
274-640 8/5/1996
0.50 ac p.5-147
- 0600430000 ⑤ Steven L. and Emily C. Workman
OR.210-1245 4/27/2009
0.61 ac p.5-147
- 0600269000 ⑥ Jeremy L. and Janelle D. Yoder
OR.191-2669 9/20/2006
0.55 ac p.7-105
- 0600770000 ⑦ June L. Roberts
288-330 4/26/1995
OR.6-974 4/14/1998
OR.62-838 11/21/2000
0.51 ac p.7-108
- 0600769000 ⑧ June L. Roberts
288-330 4/26/1995
OR.6-974 4/14/1998
OR.62-838 11/21/2000
0.51 ac p.7-108
- 0600901000 ⑨ Allen A. and Maureen E. Yoder
204-113 11/21/1978
1.372 ac p.9-9
- 0600902000 ⑩ Allen A. and Maureen E. Yoder
204-113 11/21/1978
0.179 ac p.9-9
- 0600899000 ⑪ Allen A. and Maureen E. Yoder
184-384 6/22/1973
246-610 3/26/1990
0.59 ac p.7-88
- 0600780000 ⑫ Steven J. and Terrie A. Glaouque
OR.181-1326 7/1/2005
0.459 ac p.4-72
- 0601197000 ⑬ Holmes Siding Contractors, Ltd.
OR.202-1406 2/4/2008
1.0 ac p.10-503
- 0601198001 ⑭ Holmes Siding Contractors, Ltd.
OR.202-1406 2/4/2008
1.0 ac p.10-503
- 0601198003 ⑮ Holmes Siding Contractors, Ltd.
OR.202-1406 2/4/2008
1.0 ac p.10-664
- 0600777000 ⑯ Rock Hill Land and Cattle Company, LLC
OR.216-1742 2/16/2010
0.51 ac p.3-188
(see easement OR.216-1738 2/16/2010)
- 0600222001 ⑰ Rock Hill Land and Cattle Company, LLC
OR.216-1742 2/16/2010
0.528 ac p.10-569
(see easement OR.216-1738 2/16/2010)
- 0600355000 ⑱ Holmes Siding Contractors, Ltd.
OR.192-380 10/5/2006
OR.202-1406 2/4/2008
1.124 ac p.14-444
- 0601198010 ⑲ S and S Rentals, Inc.
277-594 3/27/1997
0.532 ac p.14-403
- 0600606001 ⑳ Allen A. and Maureen E. Yoder
278-754 6/25/1997
0.0163 ac p.16-459
- 0600907001 ㉑ Laner Corporation
OR.101-202 1/28/2002
0.201 ac p.16-886
- 0600274002 ㉒ James A. and Rosa Hershberger
OR.63-570 12/4/2000
0.114 ac p.17-713
- 0600548000 ㉓ Hidden Valley Acres, Ltd.
OR.42-312 11/17/1999
0.551 ac p.2-94
- 0600779000 ㉔ Steven J. and Terrie A. Glaouque
OR.181-1326 7/1/2005
0.08 ac p.6-120
- 0600365000 ㉕ Robert L. and Roberto S. Kasner
178-429 11/5/1970
196-386 11/12/1976
273-620 5/22/1996
OR.186-1932 2/3/2006
0.08 ac p.5-9
- 0600956001 ㉖ Sue Miller Trustee
OR.111-463 6/4/2002
0.113 ac
- 0600230001 ㉗ Allen R. Glick, Trustee
231-355 6/5/1986
0.53 ac
- 0600000000 ㉘ not used
- 0600274004 ㉙ Donald M. and Joann Shoup
OR.101-627 1/30/2002
0.928 ac p.18-194
- 0600533000 ㉚ Triple M, Ltd.
OR.48-495 5/21/2003
1.0 ac
- 0600237000 ㉛ Henry G. Graff, trustee
OR.37-908 8/31/1999
1.0 ac
- 0600364000 ㉜ Robert L. and Roberto S. Kasner
178-429 11/5/1970
196-386 11/12/1976
273-620 5/22/1996
OR.186-1932 2/3/2006
0.459 ac p.4-62
- 0601029000 ㉝ Laner Corporation
OR.101-202 1/28/2002
0.901 ac p.8-863
- 0600606000 ㉞ Ben J. and Betty E. Rober
202-500 7/6/1978
1.1307 ac p.8-225
- 0600900000 ㉟ Allen A. and Maureen E. Yoder
192-499 11/28/1975
246-610 3/26/1990
1.06 ac p.7-539
- 0600637000 ㊱ Kayann Robb
181-35 8/7/1972
OR.88-69 9/20/2001
0.88 ac p.5/143
- 0600071000 ㊲ Michael J. and Stephanie M. Williams
OR.203-3175 4/15/2008
0.733 ac p.19-383
- 0600071001 ㊳ Michael J. and Stephanie M. Williams
OR.203-3194 4/15/2008
0.509 ac p.19-383
- 0600274005 ㊴ Glenn and Arlene Miller
OR.181-731 6/28/2005
1.06 ac p.19-438
- 0600915000 ㊵ Phillip R. Yoder, Linda E. Yoder,
Dale E. Yoder, Wilbur D. Yoder
OR.194-892 1/12/2007
0.612 ac p.5-73

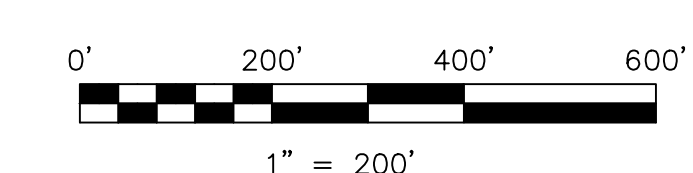


(H-33)
Sec. 15

Berlin Twp.

- ① Tranquil Acres Allotment No.1
Plat 13-178 Platted 1/29/1993
- 0601198005 ② George and Lidia Colet
258-837 2/4/1993
1.011 ac
- 0601198006 ③ Cornel and Elena Marza
264-193 4/25/1994
264-195 4/25/1994
1.026 ac
- 0601198007 ④ Ellis and Linda Sue Troyer
279-760 9/4/1997
279-763 9/4/1997
1.0 ac
- 0601198008 ⑤ Silvia Tomicic
OR.19-215 10/29/1998
OR.19-218 10/29/1998
1.0 ac

S.F.T. new survey required
for next transfer



LET IT BE KNOWN THIS MAP HAS BEEN PREPARED AS A REFERENCE GUIDE TO PROPERTY OWNERSHIP. WE BELIEVE THIS INFORMATION TO BE CORRECT AND CURRENT, HOWEVER IT IS NOT INTENDED FOR ANY LEGAL USE, WHETHER IT BE IN SALES, TRANSFERS, TRADES, LEASES OF ANY TYPE, ETC., AND DO NOT ACCEPT RESPONSIBILITY FOR ERRORS OF ANY NATURE OR OMISSIONS CONTAINED HEREIN.

Last Revision: 12/2/2010

**T-9, R-6, Section 14
HARDY TWP.
HOLMES COUNTY, OHIO**

H-38