

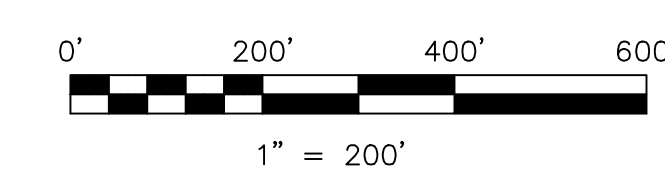
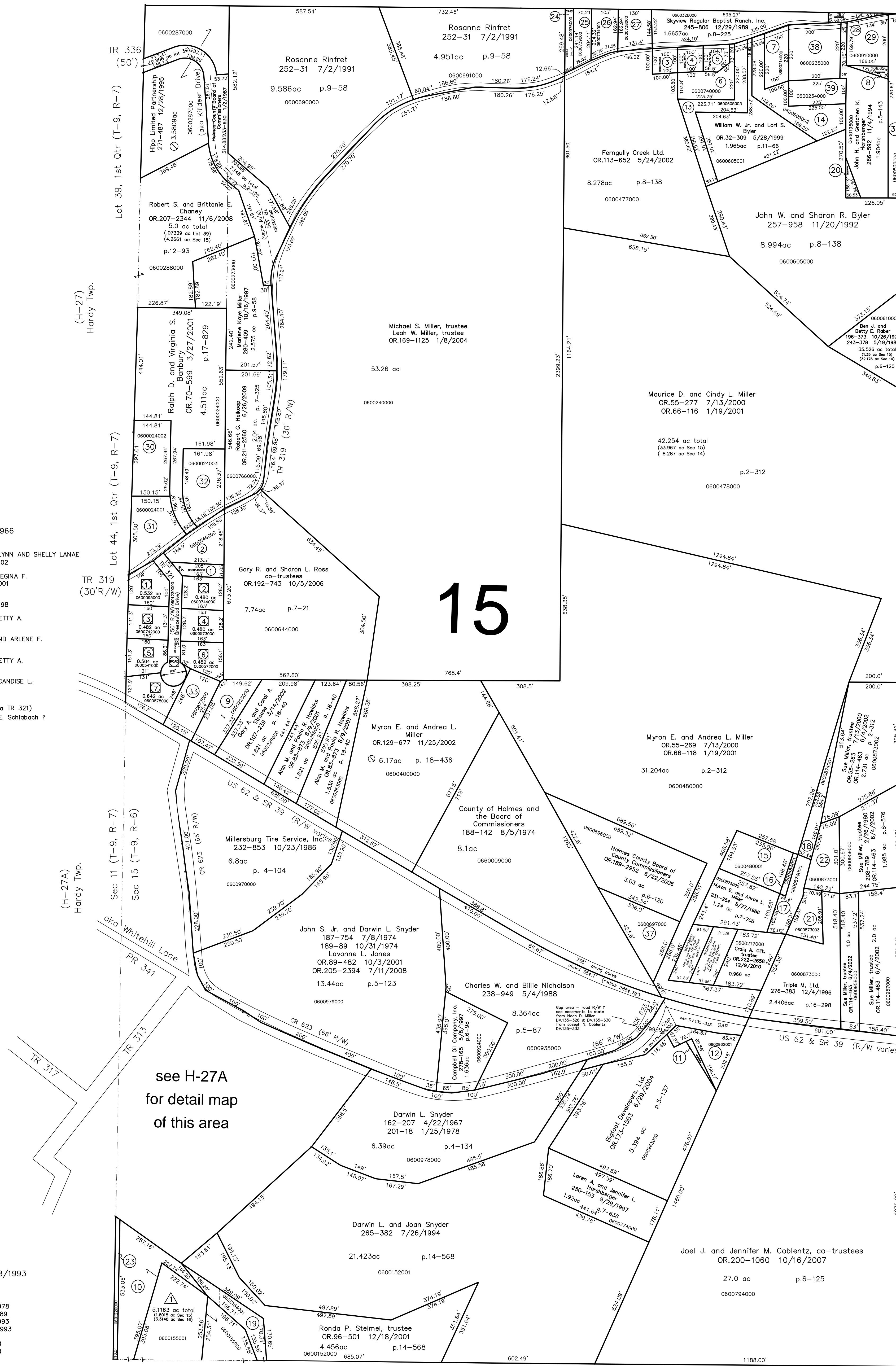
- 0600545000 ① Waneta Carter, trustee
OR.222-1732 11/29/2010
0.24 ac p.4-66
- 0600546000 ② Waneta Carter, trustee
OR.222-1732 11/29/2010
0.73 ac p.4-44
- 0600733000 ③ Shelor Properties II, LLC
OR.219-2894 8/5/2010
0.23 ac p.8-89
- 0600736000 ④ Shelor Properties II, LLC
OR.219-2894 8/5/2010
0.23 ac p.8-89
- 0600737000 ⑤ Shelor Properties II, LLC
OR.219-2894 8/5/2010
0.23 ac p.8-89
- 0600740000 ⑥ Shelor Properties II, LLC
OR.219-2894 8/5/2010
0.63 ac p.8-89
- 0600214000 ⑦ GEISENHEIMER EDWARD D. AND LOREANE F.
184-344 6/19/1973
0.50 ac p.7-85
- 0600911000 ⑧ YODER MOSES R. AND KATIE J.
191-852 6/28/1975
216-674 4/5/1982
266-831 11/29/1994
0.10 ac p.7-508
- 0600225000 ⑨ COKER CAROLINA A.
OR.0085-736 8/28/2001
0.838 ac p.18-40
- 0600155000 ⑩ Leroy A. and Marie Semko Duncan
OR.29-35 4/9/1999
OR.48-443 3/13/2000
48.041 ac total
(2.336 ac Sec 15)
(45.705 ac Sec 16)
p.2-293
- 0600962000 ⑪ BIGFOOT DEVELOPERS, LTD.
OR.0173-1563 6/29/2004
0.056 ac p.5-12
- 0600962001 ⑫ BIG FOOT DEVELOPERS, LTD.
OR.0005-028 3/24/1998
0.64 ac p.12-407
- 0600605003 ⑬ BYLER WILLIAM W. JR. AND LORI S.
OR.0032-309 5/28/1999
0.909 ac p.12-802
- 0600605002 ⑭ BYLER JOHN W. AND SHARON R.
287-787 3/8/1995
1.105 ac p.12-802
- 0600480001 ⑮ MILLER MYRON E. AND ANDREA L.
OR.0017-376 9/30/1998
0.9453 ac p.16-869
- 0600484001 ⑯ MILLER MYRON E. AND ANDREA L.
OR.0017-376 9/30/1998
0.085 ac p.16-869
- 0600874000 ⑰ MILLER MYRON E. AND ANDREA L.
274-666 8/6/1998
0.2674 ac p.5-119
- 0600874001 ⑱ MILLER MYRON E. AND ANDREA L.
OR.0131-443 12/10/2002
0.5098 ac p.16-866
- 0600154001 ⑲ STEMEL RONDA P. TRUSTEE
OR.0006-501 12/18/2001
0.584 ac p.2-293
- 0600195001 ⑳ BYLER JOHN W. AND SHARON R.
OR.0039-231 9/22/1999
0.106 ac p.17-246
- 0600873003 ㉑ MILLER MYRON E. AND ANDREA L.
OR.0055-267 7/13/2000
0.487 ac p.2-312
- 0600873001 ㉒ MILLER MYRON E. AND ANDREA L.
OR.0055-269 7/13/2000
0.675 ac p.2-312
- 0601220000 ㉓ Fairland Acres, Ltd.
OR.186-2143 2/8/2006
0.2 ac
- 0600976000 ㉔ Skyview Regular Baptist Ranch
190-95 3/12/1975
OR.208-793 12/16/2008
0.189 ac p.19-1431
- 0600739000 ㉕ Skyview Regular Baptist Ranch
OR.208-793 12/16/2008
0.359 ac p.19-1431
- 0600734000 ㉖ Skyview Regular Baptist Ranch
OR.208-793 12/16/2008
0.433 ac p.8-91
- 0600738000 ㉗ Skyview Regular Baptist Ranch
OR.208-793 12/16/2008
0.459 ac p.8-91
- 0600768000 ㉘ STEVENS GARTH E. II
OR.0055-884 6/16/2000
0.134 ac p.8-776
- 0600910000 ㉙ YODER MOSES R. AND KATIE J.
185-208 9/21/1973
216-674 4/5/1982
266-831 11/29/1994
0.71 ac p.5-24
- 0600024002 ㉚ BANBURY RALPH D.
OR.0070-593 3/27/2001
1.0 ac p.17-829
- 0600024001 ㉛ BANBURY RALPH D.
OR.0070-593 3/27/2001
1.0 ac p.17-829
- 0600024003 ㉜ BANBURY VIRGINIA S.
OR.0070-596 3/27/2001
1.0 ac p.17-829
- 0600877000 ㉝ MULHALL DAVID M.
OR.0069-670 3/16/2001
0.691 ac p.3-85
- 0600522000 ㉞ Marvin J. or Sarah J. Miller, trustees
OR.99-672 1/15/2002
0.99ac p.4-184
- 0000000000 ㉟ not used
- 0000000000 ㊱ not used
- 0600697000 ㊲ Holmes County Board of County Commissioners
OR.189-2952 6/22/2006
1.0 ac p.4-184
- 0600235000 ㊳ Ariene V. Radden
OR.84-81 8/10/2001
1.02 ac
- 0600234000 ㊴ Ariene V. Radden
OR.84-81 8/10/2001
0.516 ac p.7-682

① Breezewood Acres
Plot 4-114 Platted 9/21/1966

- 0600095000 ① HERSHBERGER ANDREW LYNN AND SHELLY LANAE
OR.0115-177 6/13/2002
- 0600744000 ② YODER BRUCE A. AND REGINA F.
OR.0096-93 12/12/2001
- 0600742000 ③ WHITE ROBERT L.
OR.0002-228 11/13/1998
- 0600573000 ④ TROYER PAUL A. AND BETTY A.
239-44 5/16/1988
- 0600541000 ⑤ WALTMAN STEPHEN J. AND ARLENE F.
253-259 10/28/1991
- 0600572000 ⑥ TROYER PAUL A. AND BETTY A.
239-44 5/16/1988
- 0600878000 ⑦ WENGER RIAN C. AND CANDISE L.
279-185 7/23/1997
- ⑧ BREEZEWOOD DRIVE (aka TR 321)
Roman D. and Fannie E. Schlabach ?
155-203 3/26/1965
0.688 ac by p.4-114

△ Duncan Allotment No.1
Plat 15-4 Platted 8/18/1993

- 0600155001 ① Leroy A. Duncan
Marie E. Semko
201-333 3/27/1978
242-18 1/17/1989
261-280 8/25/1993
261-903 10/13/1993
5.116 ac total
(1.805 ac Sec 15)
(3.3148 ac Sec 16)



S.F.T. new survey required
for next transfer

LET IT BE KNOWN, THIS MAP HAS BEEN PREPARED AS A REFERENCE GUIDE TO PROPERTY OWNERSHIP. WE BELIEVE THIS INFORMATION TO BE CORRECT AND CURRENT, HOWEVER IT IS NOT INTENDED FOR ANY LEGAL USE, WHETHER IT BE IN SALES, TRANSFERS, TRUSTS, LEASES OF ANY TYPE, ETC., AND DO NOT ACCEPT RESPONSIBILITY FOR ERRORS OF ANY NATURE OR OMISSIONS CONTAINED HEREIN.