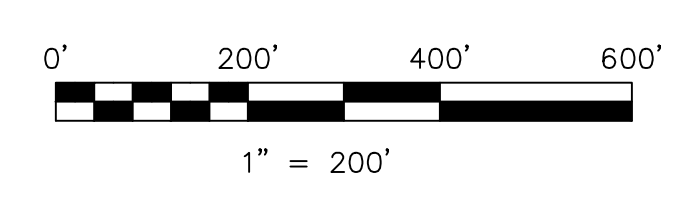


**MILLERSBURG**  
see Millersburg Map  
for detail of this area


NOTE:  
THE LOTS AND/OR PARCELS LOCATED WITHIN THE VILLAGE  
OF MILLERSBURG ARE PROVIDED AS A REFERENCE GUIDE  
ONLY. PLEASE SEE MILLERSBURG MAPS FOR DETAILED  
INFORMATION ON THESE PARCELS.

Last Revision: 7/17/2009

**T-9, R-7, Section 12**  
**Lot 41, 1st Qtr**  
**HARDY TWP.**  
**HOLMES COUNTY, OHIO**



LET IT BE KNOWN, THIS MAP HAS BEEN PREPARED AS A REFERENCE  
GUIDE TO PROPERTY OWNERSHIP. WE BELIEVE THIS INFORMATION TO  
BE CORRECT AND CURRENT, HOWEVER IT IS NOT INTENDED FOR ANY  
LEGAL USE, WHETHER IT BE IN SALES, TRANSFERS, TRADES, LEASES  
OF ANY TYPE, ETC., AND DO NOT ACCEPT RESPONSIBILITY FOR  
ERRORS OF ANY NATURE OR OMISSIONS CONTAINED HEREIN.

S.F.T.  new survey required  
for next transfer

- |  |   |  |
|--|---|--|
| 0601229000 ① UHL JAMES A. ?<br>DV.66-306 7/24/1902<br>0.03 ac S.F.T.   | 0600990000 ⑥ Susan A. Rechella, trustee<br>OR.212-468 7/17/2009<br>0.131 ac p.19-1545                       | 0600306000 ⑪ J.D. Hipp Farms, Ltd.<br>OR.209-1234 10/17/2007<br>0.231 ac p.19-1165 |
| 0600161000 ② HOLMES FIRE DISTRICT NO. 1<br>235-830 7/10/1987<br>0.203 ac p.10-242  | 0601238000 ⑦ J.D. Hipp Farms, Ltd.<br>OR.185-1909 12/19/2005<br>0.657 ac p.2-413                            | 0601222002 ⑫ J.D. Hipp Farms, Ltd.<br>OR.185-1897 12/19/2005<br>0.345 ac p.2-413   |
| 0600993000 ③ EAST HOLMES VETERINARY PROPERTIES, LLC<br>OR.211-2317 6/25/2009<br>OR.211-2319 6/25/2009<br>0.28 ac p.4-169 | 0600836000 ⑧ LM ENTERPRISES<br>267-39 12/28/1994<br>0.564 ac p.7-761  | 0600306002 ⑬ J.D. Hipp Farms, Ltd.<br>OR.186-1761 2/3/2006<br>0.301 ac p.19/620    |
| 0600590000 ④ PATTEN PATRICIA A.<br>195-47 7/19/1976<br>OR.2017-614 10/2/1998<br>0.34 ac p.4-116                          | 0600488001 ⑨ Carole J. Norman, trustee<br>OR.212-409 7/16/2009<br>OR.212-415 7/16/2009<br>0.548 ac p.12-744 |  |
| 0601230000 ⑤ HIPPI LIMITED PARTNERSHIP<br>271-487 12/28/1995<br>0.982 ac S.F.T.  | 0601222001 ⑩ J.D. Hipp Farms, Ltd.<br>OR.185-1897 12/19/2005<br>0.093 ac p.2-413                            |  |

**H-22**