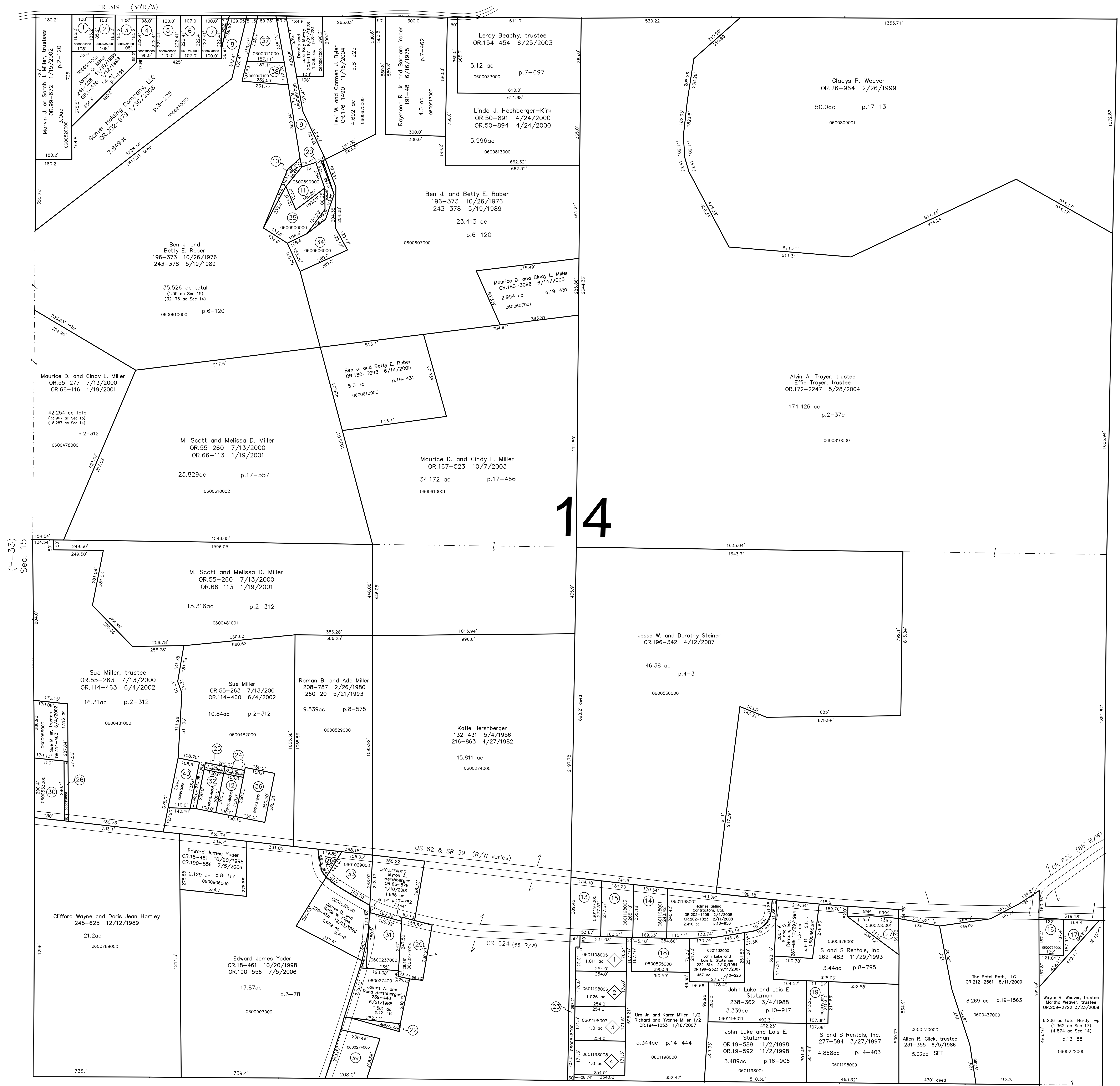


- 0600353000 ① Michael R. Howarth  
OR.96-534 12/18/2001  
0.50 ac p.4-184
- 0600735000 ② W. Tom Terwilliger  
OR.180-667 5/19/2005  
OR.210-168 4/7/2009  
0.459 ac p.8-93
- 0600732000 ③ W. Tom Terwilliger  
OR.180-667 5/19/2005  
OR.210-168 4/7/2009  
0.459 ac p.8-93
- 0600788000 ④ Paul and Peggy Swartztruber  
199-544 9/9/1977  
274-640 8/5/1996  
0.50 ac p.5-147
- 0600430000 ⑤ Steven L. and Emily C. Workman  
OR.210-1245 4/27/2009  
0.81 ac p.5-147
- 0600269000 ⑥ Jeremy L. and Jonelle D. Yoder  
OR.191-2669 9/20/2006  
0.59 ac p.7-105
- 0600770000 ⑦ June L. Roberts  
268-330 4/26/1995  
OR.6-974 4/14/1998  
OR.62-838 11/21/2000  
0.51 ac p.7-108
- 0600769000 ⑧ June L. Roberts  
268-330 4/26/1995  
OR.6-974 4/14/1998  
OR.62-838 11/21/2000  
0.51 ac p.8-394
- 0600901000 ⑨ Allen A. and Maureen E. Yoder  
204-113 11/21/1978  
1.372 ac p.9-9
- 0600902000 ⑩ Allen A. and Maureen E. Yoder  
204-113 11/21/1978  
1.179 ac p.9-9
- 0600899000 ⑪ Allen A. and Maureen E. Yoder  
184-384 8/22/1973  
246-610 3/26/1990  
0.59 ac p.7-68
- 0600780000 ⑫ Steven J. and Terrie A. Glouque  
OR.181-1326 7/1/2005  
0.459 ac p.4-72
- 0601197000 ⑬ Holmes Sliding Contractors, Ltd.  
OR.202-1406 2/4/2008  
1.0 ac p.10-503
- 0601198001 ⑭ Holmes Sliding Contractors, Ltd.  
OR.202-1406 2/4/2008  
1.0 ac p.10-650
- 0601198003 ⑮ Holmes Sliding Contractors, Ltd.  
OR.202-1406 2/4/2008  
1.0 ac p.10-664
- 0600777000 ⑯ S & S Rentals, Inc.  
OR.209-2792 3/24/2009  
0.51 ac p.3-188
- 0600222001 ⑰ S & S Rentals, Inc.  
OR.209-2792 3/24/2009  
0.626 ac p.10-960
- 0600535000 ⑱ Holmes Sliding Contractors, Ltd.  
OR.192-380 10/5/2006  
OR.202-1406 2/4/2008  
1.124 ac p.14-444
- 0601198010 ⑲ S & S Rentals, Inc.  
277-594 3/27/1997  
0.532 ac p.14-403
- 0600606001 ⑳ Allen A. and Maureen E. Yoder  
278-754 6/25/1997  
0.0163 ac p.16-459
- 0600907001 ㉑ Laner Corporation  
OR.101-202 1/28/2002  
0.201 ac p.16-896
- 0600274002 ㉒ James A. and Rosa Hershberger  
OR.63-570 12/4/2000  
0.114 ac p.17-713
- 0600548000 ㉓ Hidden Valley Acres, Ltd.  
OR.42-312 11/17/1989  
0.551 ac p.2-94
- 0600779000 ㉔ Steven J. and Terrie A. Glouque  
OR.181-1326 7/1/2005  
0.08 ac p.6-120
- 0600365000 ㉕ Robert L. and Roberta S. Kasner  
178-429 11/5/1970  
196-386 11/12/1976  
273-620 5/22/1996  
OR.186-1932 2/3/2006  
0.08 ac p.5-9
- 0600956001 ㉖ Sue Miller Trustee  
OR.114-463 6/4/2002  
0.13 ac
- 0600230001 ㉗ Allen R. Glick, Trustee  
231-355 6/5/1986  
0.53 ac
- 0600000000 ㉘ not used
- 0600274004 ㉙ Donald M. and Joann Shoup  
OR.101-627 1/30/2002  
0.628 ac p.16-184
- 0600533000 ㉚ Triple M, Ltd.  
OR.149-895 5/21/2003  
1.0 ac
- 0600237000 ㉛ Henry O. Graft, trustee  
OR.37-908 8/31/1999  
1.0 ac
- 0600364000 ㉜ Robert L. and Roberta S. Kasner  
178-429 11/5/1970  
196-386 11/12/1976  
273-620 5/22/1996  
OR.186-1932 2/3/2006  
0.459 ac p.4-62
- 0601029000 ㉝ Laner Corporation  
OR.101-202 1/28/2002  
0.901 ac p.8-863
- 0600606000 ㉞ Ben J. and Betty E. Rober  
202-500 7/6/1978  
1.1307 ac p.8-225
- 0600900000 ㉟ Allen A. and Maureen E. Yoder  
192-499 11/28/1975  
246-610 3/26/1990  
1.06 ac p.7-539
- 0600637000 ㊱ Kayann Robb  
181-55 9/7/1972  
OR.88-69 9/20/2001  
0.86 ac p.5/143
- 0600071000 ㊲ Michael J. and Stephanie M. Williams  
OR.203-3175 4/15/2008  
0.733 ac p.19-383
- 0600071001 ㊳ Michael J. and Stephanie M. Williams  
OR.203-3194 4/15/2008  
0.509 ac p.19-383
- 0600274005 ㊴ Glenn and Arlene Miller  
OR.181-731 6/28/2005  
1.06 ac p.19-438
- 0600915000 ㊵ Phillip R. Yoder, Linda E. Yoder,  
Dale E. Yoder, Wilbur D. Yoder  
OR.144-992 1/12/2007  
0.612 ac p.5-73

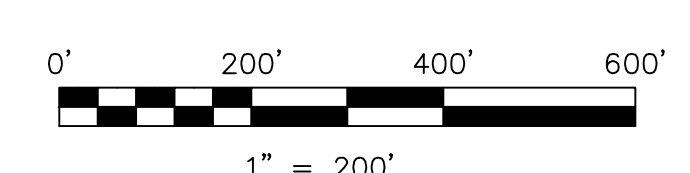


(H-33)  
Sec. 15

Berlin Twp.

- ① Tranquil Acres Allotment No.1  
Plat 13-178 Platted 1/29/1993
- 0601198005 ② Oheaghe and Lida Collet  
264-183 4/25/1994  
1.011 ac
- 0601198006 ③ Cornel and Elena Marza  
264-195 4/25/1994  
1.026 ac
- 0601198007 ④ Ellis and Linda Sue Trayer  
278-760 9/4/1997  
278-763 9/4/1997  
1.0 ac
- 0601198008 ⑤ Silvia Tarniceru  
OR.19-215 10/29/1998  
OR.19-218 10/29/1998  
1.0 ac

S.F.T. new survey required  
for next transfer



LET IT BE KNOWN, THIS MAP HAS BEEN PREPARED AS A REFERENCE  
GUIDE TO PROPERTY OWNERSHIP. WE BELIEVE THIS INFORMATION TO  
BE CORRECT AND CURRENT, HOWEVER IT IS NOT INTENDED FOR ANY  
LEGAL USE, WHETHER IT BE IN SALES, TRANSFERS, TRACES, LEASES  
OF ANY TYPE, ETC., AND DO NOT ACCEPT RESPONSIBILITY FOR  
ERRORS OF ANY NATURE OR OMISSIONS CONTAINED HEREIN.

Last Revision: 8/11/2009

**T-9, R-6, Section 14  
HARDY TWP.  
HOLMES COUNTY, OHIO**

**H-38**