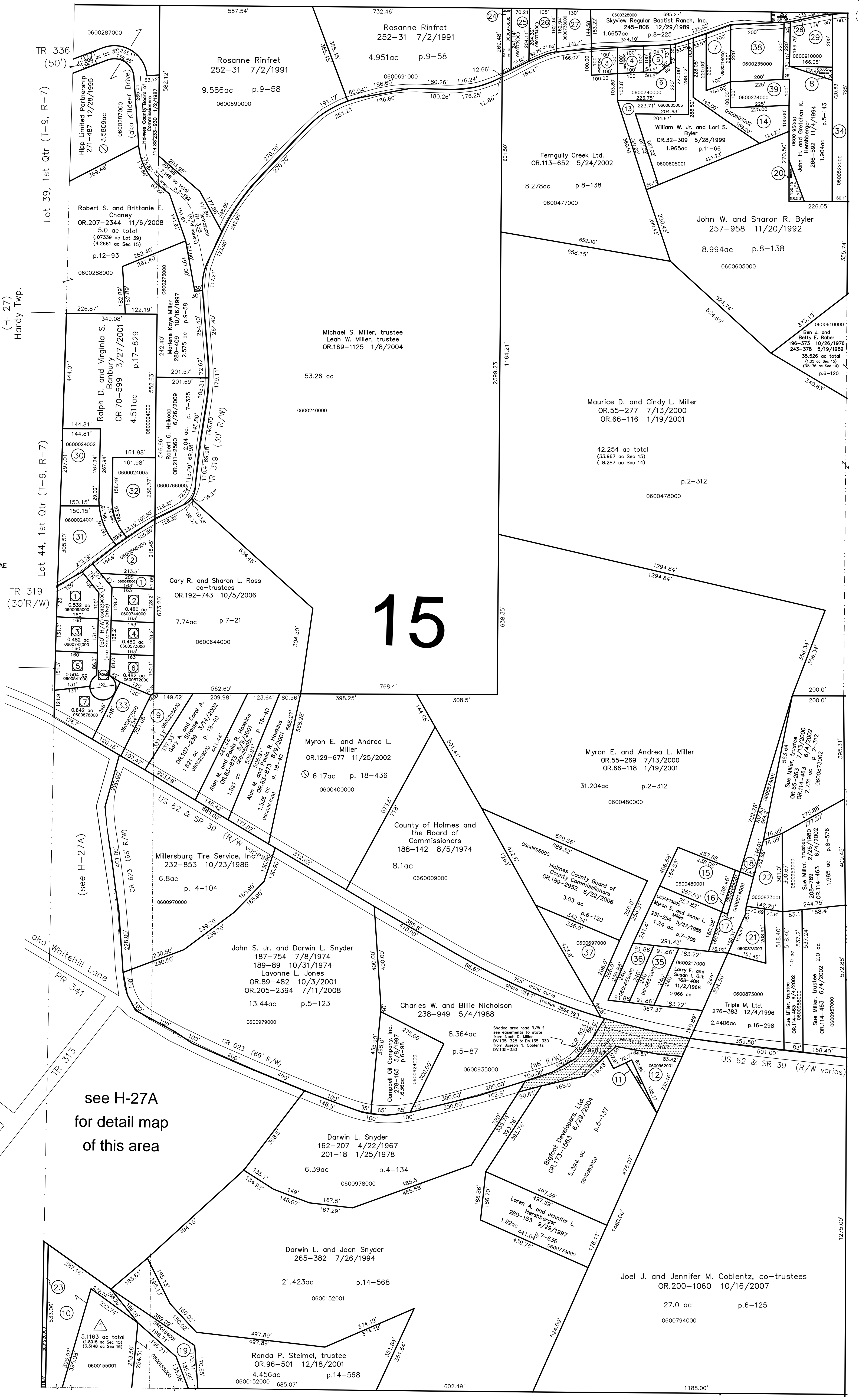


- 0600545000 ① CARTER WANETA  
217-679 7/19/1982  
260-384 6/21/1993  
OR.0111-904 5/3/2002  
OR.0172-2981 6/4/2004  
OR.0172-2985 6/4/2004  
0.24 ac p.4-66
- 0600546000 ② CARTER WANETA  
217-679 7/19/1982  
260-384 6/21/1993  
OR.0111-904 5/3/2002  
OR.0172-2981 6/4/2004  
OR.0172-2985 6/4/2004  
0.73 ac p.4-44
- 0600733000 ③ MUMAW WARD D. AND RUTH A.  
OR.0053-988 6/19/2000  
0.23 ac p.8-89
- 0600736000 ④ MUMAW WARD D. AND RUTH A.  
OR.0053-988 6/19/2000  
0.23 ac p.8-89
- 0600737000 ⑤ MUMAW WARD D. AND RUTH A.  
OR.0053-988 6/19/2000  
0.23 ac p.8-89
- 0600740000 ⑥ MUMAW WARD D. AND RUTH A.  
OR.0053-988 6/19/2000  
0.63 ac p.8-89
- 0600214000 ⑦ SEISENHEMER EDWARD D. AND LOREANNE F.  
184-344 6/21/1993  
0.50 ac p.7-65
- 0600911000 ⑧ YODER MOSES R. AND KATY J.  
191-662 8/29/1975  
216-674 4/5/1982  
266-831 11/29/1994  
0.10 ac p.7-508
- 0600225000 ⑨ COKER CAROLINA A.  
OR.0005-736 8/28/2001  
0.835 ac p.18-40
- 0600155000 ⑩ Leroy A. and Marie Semko Duncan  
OR.29-35 4/5/1999  
OR.48-643 3/13/2000  
48.041 ac total  
(2.336 ac Sec 15)  
(45.705 ac Sec 16)  
p.2-293
- 0600962000 ⑪ BIGFOOT DEVELOPERS, LTD.  
OR.0173-1563 6/29/2004  
0.056 ac p.5-137
- 0600962001 ⑫ BIG FOOT DEVELOPERS, LTD.  
OR.0005-628 3/24/1998  
0.64 ac p.12-407
- 0600605003 ⑬ BYLER WILLIAM W. JR. AND LORI S.  
OR.0032-309 5/28/1999  
0.909 ac p.12-802
- 0600605002 ⑭ BYLER JOHN W. AND SHARON R.  
267-787 3/8/1995  
1.105 ac p.12-802
- 0600480001 ⑮ MILLER MYRON E. AND ANDREA L.  
OR.0017-376 9/30/1998  
0.9455 ac p.16-869
- 0600484001 ⑯ MILLER MYRON E. AND ANDREA L.  
OR.0017-376 9/30/1998  
0.085 ac p.16-869
- 0600874000 ⑰ MILLER MYRON E. AND ANDREA L.  
274-666 8/6/1996  
0.2674 ac p.5-119
- 0600874001 ⑱ MILLER MYRON E. AND ANDREA L.  
OR.0031-443 12/10/2002  
0.5096 ac p.16-868
- 0600154001 ⑲ STEMEL RONDA P. TRUSTEE  
OR.0096-501 12/18/2001  
0.594 ac p.2-293
- 0600195001 ⑳ BYLER JOHN W. AND SHARON R.  
OR.0039-231 9/22/1999  
0.106 ac p.17-246
- 0600873003 ㉑ MILLER MYRON E. AND ANDREA L.  
OR.0055-267 7/13/2000  
0.467 ac p.2-312
- 0600873001 ㉒ MILLER MYRON E. AND ANDREA L.  
OR.0055-269 7/13/2000  
0.675 ac p.2-312
- 0601220000 ㉓ Fairland Acres, Ltd.  
OR.186-2143 2/8/2006  
0.2 ac
- 0600976000 ㉔ Skyview Regular Baptist Ranch  
190-95 3/12/1975  
OR.208-793 12/16/2008  
0.189 ac p.19-1431
- 0600739000 ㉕ Skyview Regular Baptist Ranch  
OR.208-793 12/16/2008  
0.359 ac p.19-1431
- 0600734000 ㉖ Skyview Regular Baptist Ranch  
OR.208-793 12/16/2008  
0.433 ac p.8-91
- 0600738000 ㉗ Skyview Regular Baptist Ranch  
OR.208-793 12/16/2008  
0.459 ac p.8-91
- 0600768000 ㉘ STEVENS GARTH E. II  
OR.0055-884 6/16/2000  
0.14 ac p.7-192
- 0600910000 ㉙ YODER MOSES R. AND KATY J.  
185-206 9/27/1973  
216-674 4/5/1982  
266-831 11/29/1994  
0.71 ac p.5-24
- 0600024002 ㉚ BANBURY RALPH D.  
OR.0070-593 3/27/2001  
1.0 ac p.17-829
- 0600024001 ㉛ BANBURY RALPH D.  
OR.0070-593 3/27/2001  
1.0 ac p.17-829
- 0600024003 ㉜ BANBURY VIRGINIA S.  
OR.0070-596 3/27/2001  
1.0 ac p.17-829
- 0600877000 ㉝ MILHALL DAVID M.  
OR.0068-673 6/16/2000  
0.89 ac p.4-154
- 0600522000 ㉞ ~~MILHALL DAVID M.~~  
~~OR.0068-673 6/16/2000~~  
~~0.89 ac p.4-154~~
- 0600657000 ㉟ Allen D. and Ruth A. Schie  
202-721 7/25/1978  
0.463 ac
- 0600656000 ㊱ Allen D. and Ruth A. Schie  
202-721 7/25/1978  
0.463 ac
- 0600697000 ㊲ Holmes County Board of County Commissioners  
OR.189-2952 6/22/2006  
1.0 ac p.4-184
- 0600235000 ㊳ Arlene V. Rodden  
OR.84-81 8/10/2001  
1.02 ac
- 0600234000 ㊴ Arlene V. Rodden  
OR.84-81 8/10/2001  
0.516 ac p.7-682

- ① Breezewood Acres  
Plot 4-114 Platted 9/21/1966
- 0600095000 ① HERCHBERGER ANDREW LYNN AND SHELLY LANAE  
OR.0115-177 6/13/2002
- 0600744000 ② YODER BRUCE A. AND REGINA F.  
OR.0096-93 12/12/2001
- 0600742000 ③ WHITE ROBERT L.  
OR.0020-228 11/13/1998
- 0600573000 ④ TROYER PAUL A. AND BETTY A.  
239-44 5/16/1988
- 0600541000 ⑤ WALTMAN STEPHEN J. AND ARLENE F.  
253-259 10/28/1991
- 0600572000 ⑥ TROYER PAUL A. AND BETTY A.  
239-44 5/16/1988
- 0600878000 ⑦ HENGERO RIAN C. AND CANDISE L.  
278-185 7/23/1997
- ⑧ BREEZEWOOD DRIVE (aka TR 321)  
Roman D. and Fannie E. Schlabach ?  
155-203 3/28/1965  
156-203  
0.688 ac p.4-114
- △ Duncan Allotment No. 1  
Plot 15-4 Platted 8/18/1993
- 0600155001 ㉟ Leroy A. Duncan  
Marie E. Semko  
201-333 3/27/1978  
242-18 1/17/1989  
261-280 8/25/1993  
261-803 10/13/1993  
5.116 ac total  
(1.8050 ac Sec 15)  
(3.3148 ac Sec 16)



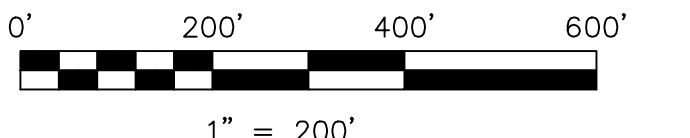
TR 319  
(30'R/W)

Sec. 14 (T-9, R-6)  
Hardy Twp.  
(H-38)

Sec. 16 (T-9, R-6)  
Hardy Twp.  
(H-32)

Last Revision: 6/26/2009

**T-9, R-6, Section 15  
HARDY TWP.  
HOLMES COUNTY, OHIO**



S.F.T.  
① new survey required  
for next transfer

LET IT BE KNOWN, THIS MAP HAS BEEN PREPARED AS A REFERENCE GUIDE TO PROPERTY OWNERSHIP. WE BELIEVE THIS INFORMATION TO BE CORRECT AND CURRENT, HOWEVER IT IS NOT INTENDED FOR ANY LEGAL USE, WHETHER IT BE IN SALES, TRANSFERS, TRADES, LEASES OF ANY TYPE, ETC., AND DO NOT ACCEPT RESPONSIBILITY FOR ERRORS OF ANY NATURE OR OMISSIONS CONTAINED HEREIN.

**H-33**