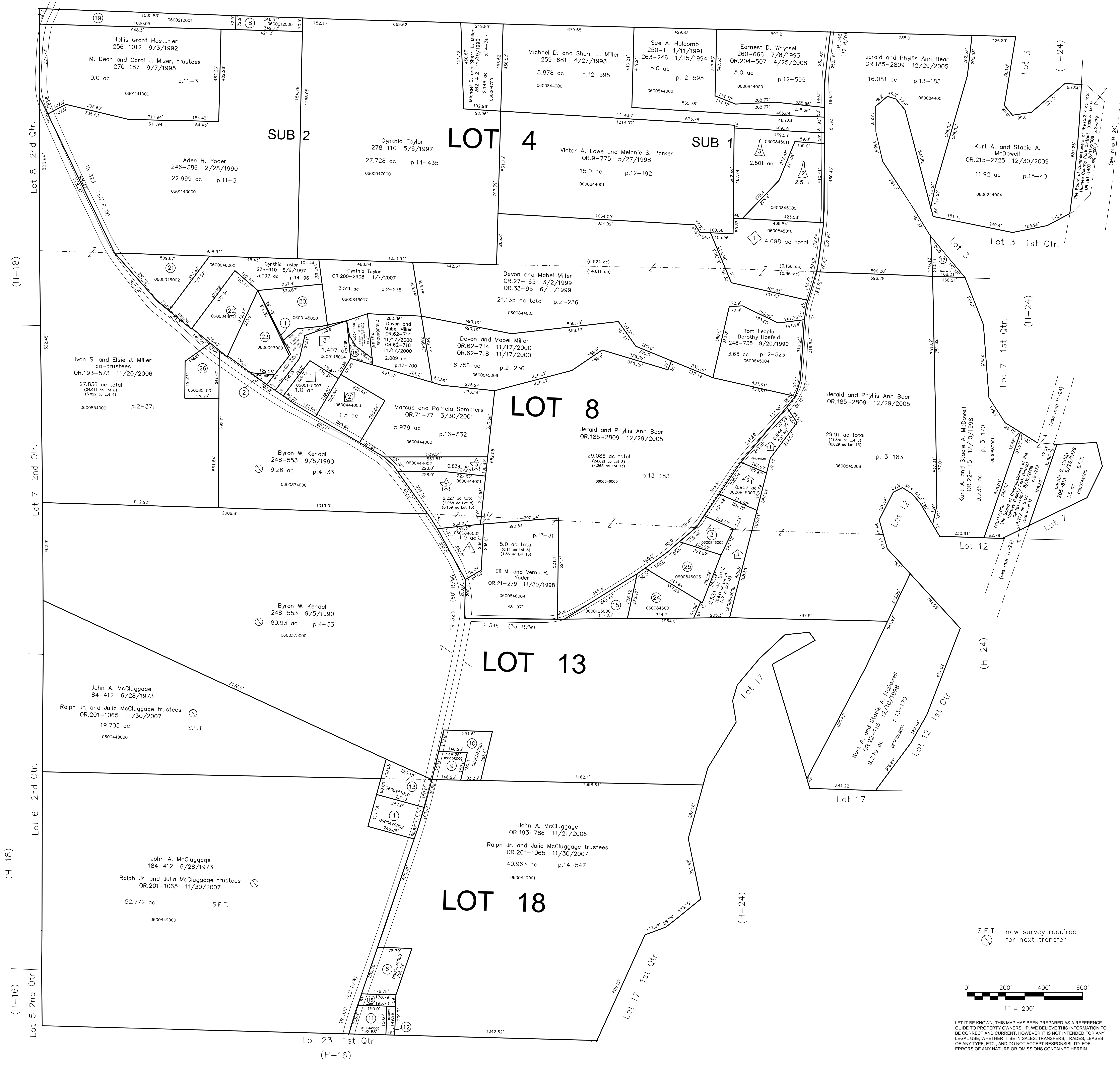
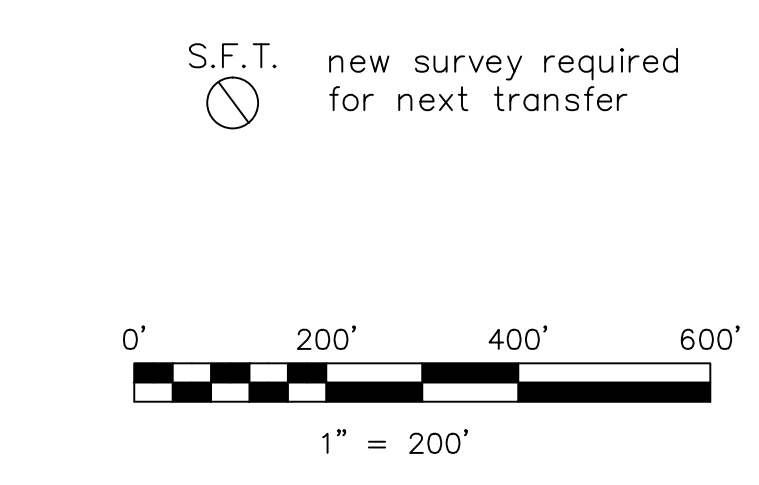


- 0600145001 1 MAYNARD HARVEY L. AND LYNN S. 237-913 1/29/1988 0.041 ac p.10-896
- 0600145002 2 MAYNARD HARVEY L. AND LYNN S. 237-913 1/29/1988 0.082 ac p.10-896
- 0600846005 3 STROUSE JAMES D. AND LOIS E. 241-151 11/4/1988 0.649 ac p.13-31
- 0600449002 4 MCGUIGGAGE CHERYL ANN OR.0108-331 3/28/2002 1.0 ac p.18-243
- 5 Not used
- 0600449003 6 MCGUIGGAGE DAVID OR.0168-1414 11/24/2003 OR.0169-978 1/6/2004 1.0 ac p.18-813
- 7 Not used
- 0600212000 8 MARTIN DAVID N. AND JAMES N. OR.0149-530 5/16/2003 0.573 ac p.12-922
- 0600542000 9 Wayne E. Miller OR.193-3073 12/22/2006 0.50 ac p.5-14
- 0600375001 10 Wayne E. Miller OR.193-3073 12/22/2006 1.0 ac p.14-502
- 0600446000 11 MCGUIGGAGE JOHN A. AND PHYLLIS A. 147-381 3/29/1962 0.59 ac p.3-550
- 0600447000 12 MCGUIGGAGE JOHN A. AND PHYLLIS A. 184-417 6/28/1973 0.154 ac p.7-70
- 0600451000 13 Ralph Jr. and Julia McCluggage, trustees OR.201-1065 11/30/2007 1.0 ac total p.7-70 (0.705 ac Lot 18 + 0.295 ac Lot 13)
- 14 Not used
- 0600125000 15 David E. and Suzanne E. Peight OR.184-2079 11/7/2005 0.872 ac p.7-247
- 0600447001 16 MCGUIGGAGE DAVID OR.0168-1416 11/26/2003 0.256 ac p.18-813
- 0600244002 17 Kurt A. and Stacie A. McDowell OR.215-2725 12/30/2009 0.405 ac p.15-40
- 0600145006 18 Brodie T. DeHass OR.215-27 11/23/2009 0.181 ac p.19-1604
- 0600212001 19 MOSSOR, JEROD J. LANE, SAMANTHY E. 284-219 4/26/1994 1.794 ac p.12-922
- 0600145000 20 Cynthia Taylor OR.200-2908 11/7/2473 1.53 ac p.14-862
- 0600046002 21 FARLEY DEWEY R. AND SARITA J. 245-715 12/19/1989 1.865 ac p.12-352
- 0600046001 22 TAYLOR CYNTHIA OR.0091-451 10/25/2001 1.665 ac p.12-352
- 0600097000 23 MAYNARD HARVEY L. AND LYNN S. 219-816 3/17/1983 1.748 ac p.8-609
- 0600846001 24 Richard L. and Susie E. Watson OR.192-2888 11/3/2006 1.478 ac p.19-855
- 0600846003 25 STROUSE LOIS E. AND JAMES D. 232-174 8/29/1986 238-885 4/26/1988 1.5 ac p.10-598
- 0600854001 26 Richard and Lori Edwards OR.193-578 11/20/2006 1.000 ac p.19-869



- George F. Dawson Allotment No.1 Plat 13-198 Platted 7/19/1993
- 0600846002 EDMONSON SUSAN E. 281-460 11/19/1997 1.0 ac
- George F. Dawson Allotment No.2 Plat 17-833 Platted 3/28/2001
- 0600444003 DAWSON GEORGE E. AND BARBARA J. OR.0071-2 3/30/2001 1.5 ac
- Levi A. Miller Allotment No.1 Plat 13-194 Platted 6/29/1993
- 0600845010 BROWN SCOTT AND WENDY 268-410 5/2/1995 4.998 ac
- Levi A. Miller Allotment No.2 Plat 15-16 Platted 9/27/1993
- 0600845000 WHYTSSELL DAVID A. AND CHERYL L. 261-751 9/28/1993 2.5 ac
- 0600845011 LOWE, VICTOR A. PARKER, MELANIE S. OR.0009-775 5/27/1998 2.501 ac
- Replotting and Renumbering of Gerald W. McBride Allotment No.1 Plat 16-864 Platted 9/18/1998
- 0600444001 MCBRIDE GERALD W. AND BERTHA M. 209-436 5/8/1980 278-895 9/11/1997 2.227 ac
- 0600444002 SUMMERS MARCUS AND PAMELA OR.0071-77 3/30/2001 0.834 ac
- Sechriest Subdivision Plat 17-769 Platted 1/24/2001
- 0600145003 Brodie T. DeHass OR.210-1310 4/27/2009 1.000 ac p.17-769
- Sechriest Subdivision - First Addition Plat 18-820 Platted 12/2/2003
- 0600145004 Brodie T. DeHass OR.210-1310 4/27/2009 1.407 ac p.18-820
- Watson-Strouse Subdivision Plat 17-688 Platted 11/7/2000
- 0600845005 STROUSE STEPHANIE E. OR.0110-283 4/17/2002 0.944 ac
- 0600845003 STROUSE JAMES D. AND LOIS E. OR.0063-134 11/28/2000 0.907 ac
- 0600846006 PATTERSON JAMES L. AND ROSEL A. OR.0065-100 1/3/2001 2.524 ac



LET IT BE KNOWN, THIS MAP HAS BEEN PREPARED AS A REFERENCE GUIDE TO PROPERTY OWNERSHIP. WE BELIEVE THIS INFORMATION TO BE CORRECT AND CURRENT, HOWEVER IT IS NOT INTENDED FOR ANY LEGAL USE, WHETHER IT BE IN SALES, TRANSFERS, TRADES, LEASES OF ANY TYPE, ETC., AND DO NOT ACCEPT RESPONSIBILITY FOR ERRORS OF ANY NATURE OR OMISSIONS CONTAINED HEREIN.

Last Revision: 12/30/2009

**T-9, R-7, 1st QTR.  
LOTS 4, 8, 13, 18  
HARDY TWP.  
HOLMES COUNTY, OHIO**

**H-17**