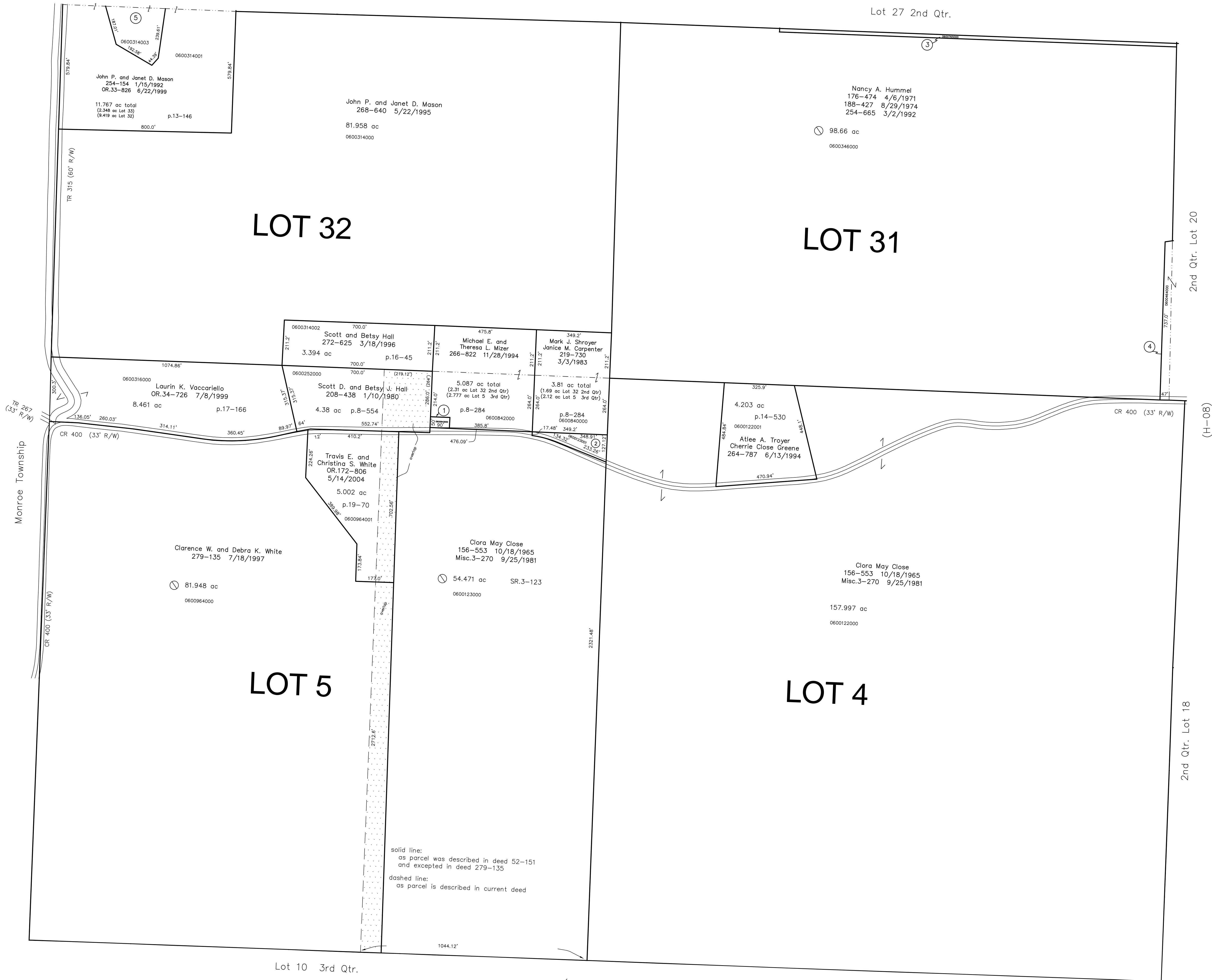


Lot 36 2nd Qtr.

(H-05)

Lot 27 2nd Qtr.



Lot 10 3rd Qtr.

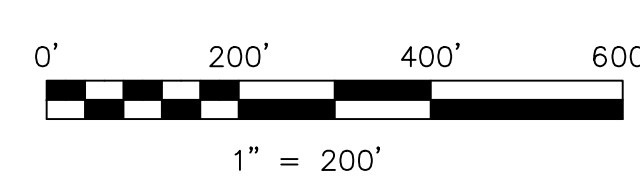
(H-02)

Lot 9 3rd Qtr.

- 0600843000 ① John P. and Janet D. Mason
226-689 4/1/1985
0.103 ac p.13-146
- 0600123001 ② Mark J. and Janice M. Shroyer
270-223 9/11/1995
0.529 ac p.14-917
- 0600765000 ③ Ruth Steimer
130-163 10/7/1954
0.75 ac S.F.T.
- 0600464000 ④ Maynard B. and Betty L. Hummel
OR. 168-574 11/14/2003
8.41 ac total p.5-85
(7.57 ac Lot 17 + 0.84 ac Lot 31)
- 0600314003 ⑤ Renegade Structures, LLC
OR.200-396 10/4/2007
3.199 ac total p.19-1156
(1.229 ac Lot 32 + 1.970 ac Lot 33)

Last Revision: 10/4/2007

T-9, R-7
2nd Qtr., LOTS 31, 32
3rd Qtr., Lots 4, 5
HARDY TWP.
HOLMES COUNTY, OHIO



S.F.T. new survey required
 for next transfer

LET IT BE KNOWN, THIS MAP HAS BEEN PREPARED AS A REFERENCE GUIDE TO PROPERTY OWNERSHIP. WE BELIEVE THIS INFORMATION TO BE CORRECT AND CURRENT. HOWEVER IT IS NOT INTENDED FOR ANY LEGAL USE, WHETHER IT BE IN SALES, TRANSFERS, TRADES, LEASES OF ANY TYPE, ETC., AND DO NOT ACCEPT RESPONSIBILITY FOR ERRORS OF ANY NATURE OR OMISSIONS CONTAINED HEREIN.

H-03