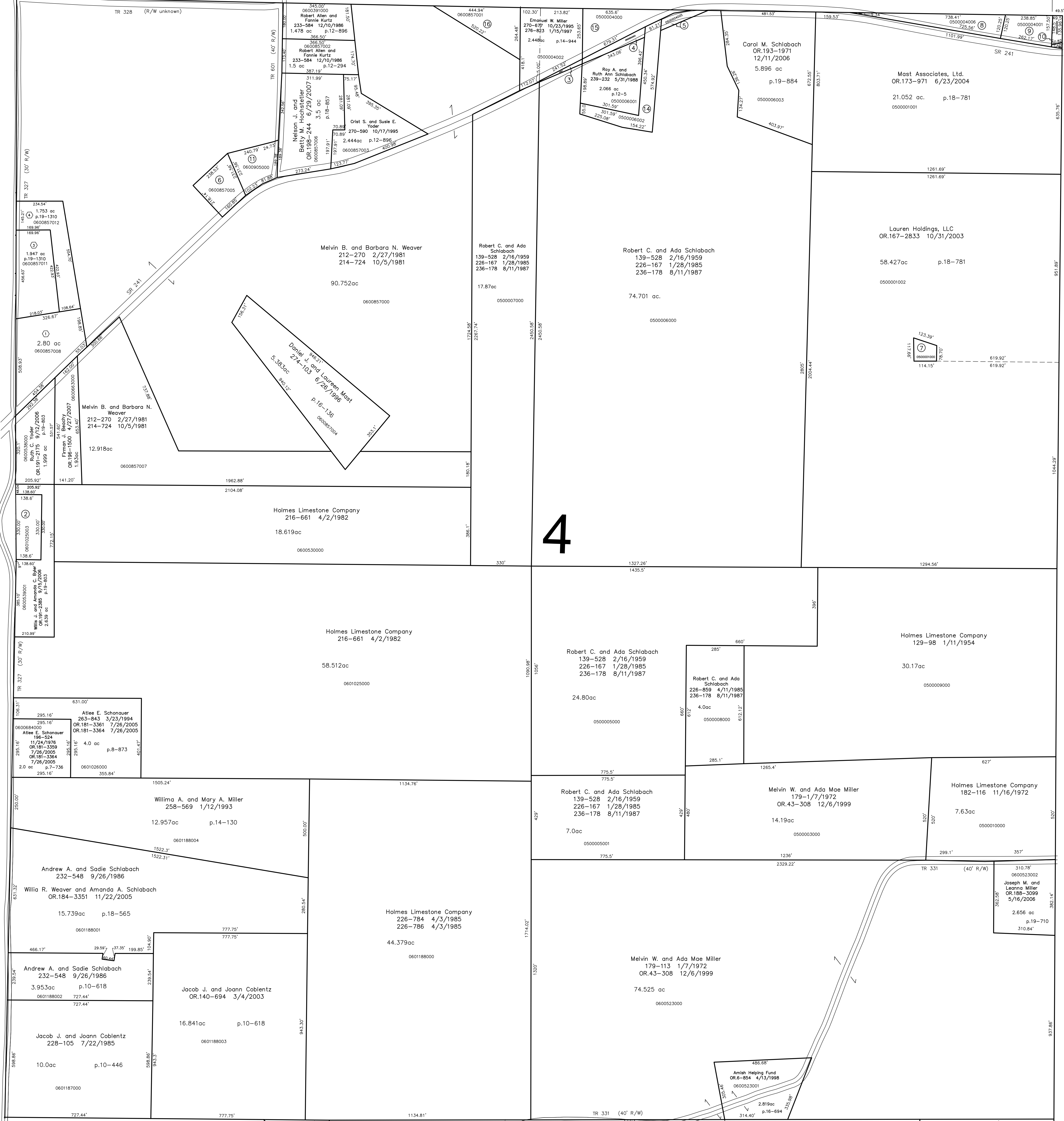


(H-35)  
Sec. 5

Berlin Twp.  
(B-05)



- ① not used
- ② Trustees of the Honey Run Cemetery of the Schlabach District Amish Church 263-846 3/23/1994 1.05 ac p.14-469
- ③ Robert C. and Ada Schlabach 271-331 12/18/1995 0.071 ac p.14-978
- ④ Roy A. and Ruth Ann Schlabach 271-329 12/18/1995 0.276 ac p.14-978
- ⑤ Robert C. and Ada Schlabach 271-331 12/18/1995 0.221 ac p.14-978
- ⑥ Lizzie C. Yoder OR.193-2672 12/20/2006 1.0 ac p.16-256
- ⑦ Mast Associates 215-983 1/12/1982 273-455 5/13/1996 0.261 ac
- ⑧ Allen W. and Esther Miller 278-198 7/24/1997 1.079 ac p.16-491
- ⑨ Roy J. and Elmira Miller 183-748 5/8/1973 186-184 1/22/1974 258-166 12/11/1992 0.16 ac
- ⑩ Roy J. and Elmira Miller 183-748 5/8/1973 186-184 1/22/1974 258-166 12/11/1992 0.16 ac
- ⑪ Lizzie C. Yoder OR.193-2672 12/20/2006 1.014 ac p.8-22
- ⑫ not used
- ⑬ not used
- ⑭ Roy A. and Ruth Ann Schlabach OR.30-942 5/5/1999 1.439 ac p.17-94
- ⑮ Jonas W. and Anna Miller 278-26 7/14/1997 278-30 7/14/1997 1.432 ac
- ⑯ Board of Trustees Scenic View Parochial School 238-621 7/6/1988 1.301 ac p.12-28

- MB Acres Subdivision Plat 19-725 Platted 6/5/2006
- ① Emma J. Troyer OR.190-160 6/25/2006 2.80 ac p.19-725
- ② replatted P.19-1310 5/20/2008
- MB Acres Subdivision Replat of Lot 2 and Additional Lands Plat 19-1310 Platted 5/21/2008
- ③ Wallace Zook and Mary Zook and Karen Zook OR.205-399 6/17/2008 1.947 ac p.19-1310
- ④ Karen Zook OR.205-398 6/17/2008 1.753 ac p.19-1310

(H-39)  
Sec. 7

S.F.T. new survey required for next transfer

Last Revision: 6/17/2008



LET IT BE KNOWN, THIS MAP HAS BEEN PREPARED AS A REFERENCE GUIDE TO PROPERTY OWNERSHIP. WE BELIEVE THIS INFORMATION TO BE CORRECT AND CURRENT. HOWEVER IT IS NOT INTENDED FOR ANY LEGAL USE, WHETHER IT BE IN SALES, TRANSFERS, TRACES, LEASES OF ANY TYPE, ETC., AND DO NOT ACCEPT RESPONSIBILITY FOR ERRORS OF ANY NATURE OR OMISSIONS CONTAINED HEREIN.

**T-9, R-6, Section 4  
HARDY TWP.  
HOLMES COUNTY, OHIO**

**H-40**