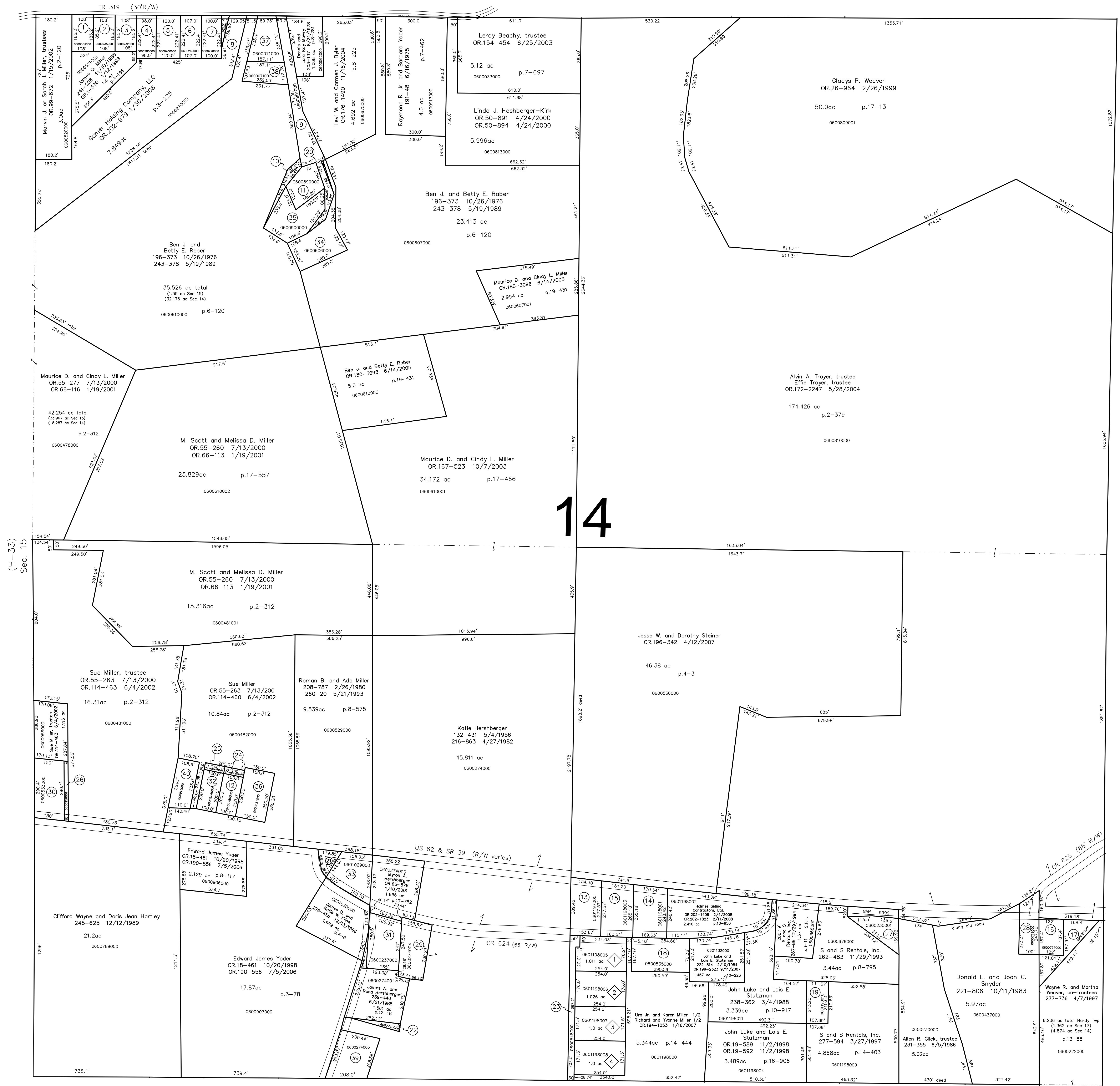
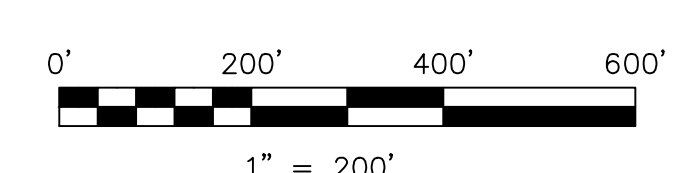


- 0600353000 ① Michael R. Howarth
OR.96-534 12/18/2001
0.50 ac p.4-184
- 0600735000 ② W. Tom Terwilliger and Joseph Kennedy
OR.180-667 5/18/2005
0.459 ac p.8-93
- 0600732000 ③ W. Tom Terwilliger and Joseph Kennedy
OR.180-667 5/18/2005
0.459 ac p.8-93
- 0600788000 ④ Paul and Peggy Swartztruber
199-544 9/9/1977
274-640 8/5/1996
0.50 ac p.5-147
- 0600430000 ⑤ Carol A. Helm aka Van Natta
OR.140-180 2/27/2003
0.61 ac p.5-147
- 0600269000 ⑥ Jeremy L. and Jonelle D. Yoder
OR.191-2669 9/20/2006
0.59 ac p.7-105
- 0600770000 ⑦ June L. Roberts
268-330 4/26/1995
OR.6-974 4/14/1998
OR.62-838 11/21/2000
0.51 ac p.7-108
- 0600769000 ⑧ June L. Roberts
268-330 4/26/1995
OR.6-974 4/14/1998
OR.62-838 11/21/2000
0.51 ac p.8-394
- 0600901000 ⑨ Allen A. and Maureen E. Yoder
204-113 11/21/1978
1.372 ac p.9-9
- 0600902000 ⑩ Allen A. and Maureen E. Yoder
204-113 11/21/1978
0.179 ac p.9-9
- 0600899000 ⑪ Allen A. and Maureen E. Yoder
184-384 8/22/1973
246-610 3/26/1990
0.59 ac p.7-68
- 0600780000 ⑫ Steven J. and Terrie A. Glouque
OR.181-1326 7/1/2005
0.459 ac p.4-72
- 0601197000 ⑬ Holmes Sliding Contractors, Ltd.
OR.202-1406 2/4/2008
1.0 ac p.10-503
- 0601198001 ⑭ Holmes Sliding Contractors, Ltd.
OR.202-1406 2/4/2008
1.0 ac p.10-650
- 0601198003 ⑮ Holmes Sliding Contractors, Ltd.
OR.202-1406 2/4/2008
1.0 ac p.10-664
- 0600777000 ⑯ Donald L. and Joan C. Snyder
255-101 4/7/1992
0.51 ac p.3-188
- 0600222001 ⑰ Donald L. and Joan C. Snyder
239-108 5/23/1989
0.628 ac p.10-990
- 0600535000 ⑱ Holmes Sliding Contractors, Ltd.
OR.192-380 10/5/2006
OR.202-1406 2/4/2008
1.124 ac p.14-444
- 0601198010 ⑳ S and S Rentals, Inc.
277-594 3/27/1997
0.532 ac p.14-403
- 0600606001 ㉑ Allen A. and Maureen E. Yoder
278-754 6/25/1997
0.0163 ac p.16-459
- 0600907001 ㉒ Laner Corporation
OR.101-202 1/28/2002
0.201 ac p.16-896
- 0600274002 ㉓ James A. and Rosa Hershberger
OR.63-570 12/4/2000
0.114 ac p.17-713
- 0600548000 ㉔ Hidden Valley Acres, Ltd.
OR.42-312 11/17/1999
0.551 ac p.2-94
- 0600779000 ㉕ Steven J. and Terrie A. Glouque
OR.181-1326 7/1/2005
0.08 ac p.6-120
- 0600365000 ㉖ Robert L. and Roberta S. Kasner
178-429 11/5/1970
196-386 11/12/1976
273-620 5/22/1996
OR.186-1932 2/3/2006
0.08 ac p.5-9
- 0600956001 ㉗ Sue Miller Trustee
OR.114-463 6/4/2002
0.13 ac
- 0600230001 ㉘ Allen R. Glick, Trustee
231-355 6/5/1986
0.53 ac
- 0600778000 ㉙ Donald L. and Joan C. Snyder
215-296 11/10/1981
0.71 ac
- 0600274004 ㉚ Donald M. and Joann Shoup
OR.101-627 1/30/2002
0.628 ac p.16-184
- 0600533000 ㉛ Triple M, Ltd.
OR.149-895 5/21/2003
1.0 ac
- 0600237000 ㉜ Henry O. Graft, trustee
OR.37-908 8/31/1999
1.0 ac
- 0600364000 ㉝ Robert L. and Roberta S. Kasner
178-429 11/5/1970
196-386 11/12/1976
273-620 5/22/1996
OR.186-1932 2/3/2006
0.459 ac p.4-62
- 0601029000 ㉞ Laner Corporation
OR.101-202 1/28/2002
0.901 ac p.8-863
- 0600606000 ㉟ Ben J. and Betty E. Rober
202-500 7/6/1978
1.1307 ac p.8-225
- 0600900000 ㊱ Allen A. and Maureen E. Yoder
192-499 11/28/1975
246-610 3/26/1990
1.06 ac p.7-539
- 0600637000 ㊲ Kayann Robb
181-55 9/7/1972
OR.88-69 9/20/2001
0.86 ac p.5/143
- 0600071000 ㊳ Michael J. and Stephanie M. Williams
OR.203-3175 4/15/2008
0.733 ac p.19-383
- 0600071001 ㊴ Michael J. and Stephanie M. Williams
OR.203-3194 4/15/2008
0.509 ac p.19-383
- 0600274005 ㊵ Glenn and Arlene Miller
OR.181-731 6/28/2005
1.06 ac p.19-438
- 0600915000 ㊶ Phillip R. Yoder, Linda E. Yoder,
Dale E. Yoder, Wilbur D. Yoder
OR.144-992 1/12/2007
0.612 ac p.5-73



- ① Tranquil Acres Allotment No.1
Plat 13-178 Platted 1/29/1993
- 0601198005 ② Oeaghre and Lida Collet
264-183 4/25/1994
1.011 ac
- 0601198006 ③ Cornel and Elena Marza
264-195 4/25/1994
1.026 ac
- 0601198007 ④ Ella and Linda Sue Trayer
278-760 9/4/1997
278-763 9/4/1997
1.0 ac
- 0601198008 ⑤ Silvia Tarniceru
OR.19-215 10/29/1998
OR.19-218 10/29/1998
1.0 ac

S.F.T. new survey required
for next transfer



LET IT BE KNOWN, THIS MAP HAS BEEN PREPARED AS A REFERENCE
GUIDE TO PROPERTY OWNERSHIP. WE BELIEVE THIS INFORMATION TO
BE CORRECT AND CURRENT, HOWEVER IT IS NOT INTENDED FOR ANY
LEGAL USE, WHETHER IT BE IN SALES, TRANSFERS, TRACES, LEASES
OF ANY TYPE, ETC., AND DO NOT ACCEPT RESPONSIBILITY FOR
ERRORS OF ANY NATURE OR OMISSIONS CONTAINED HEREIN.

Last Revision: 4/15/2008

**T-9, R-6, Section 14
HARDY TWP.
HOLMES COUNTY, OHIO**

H-38