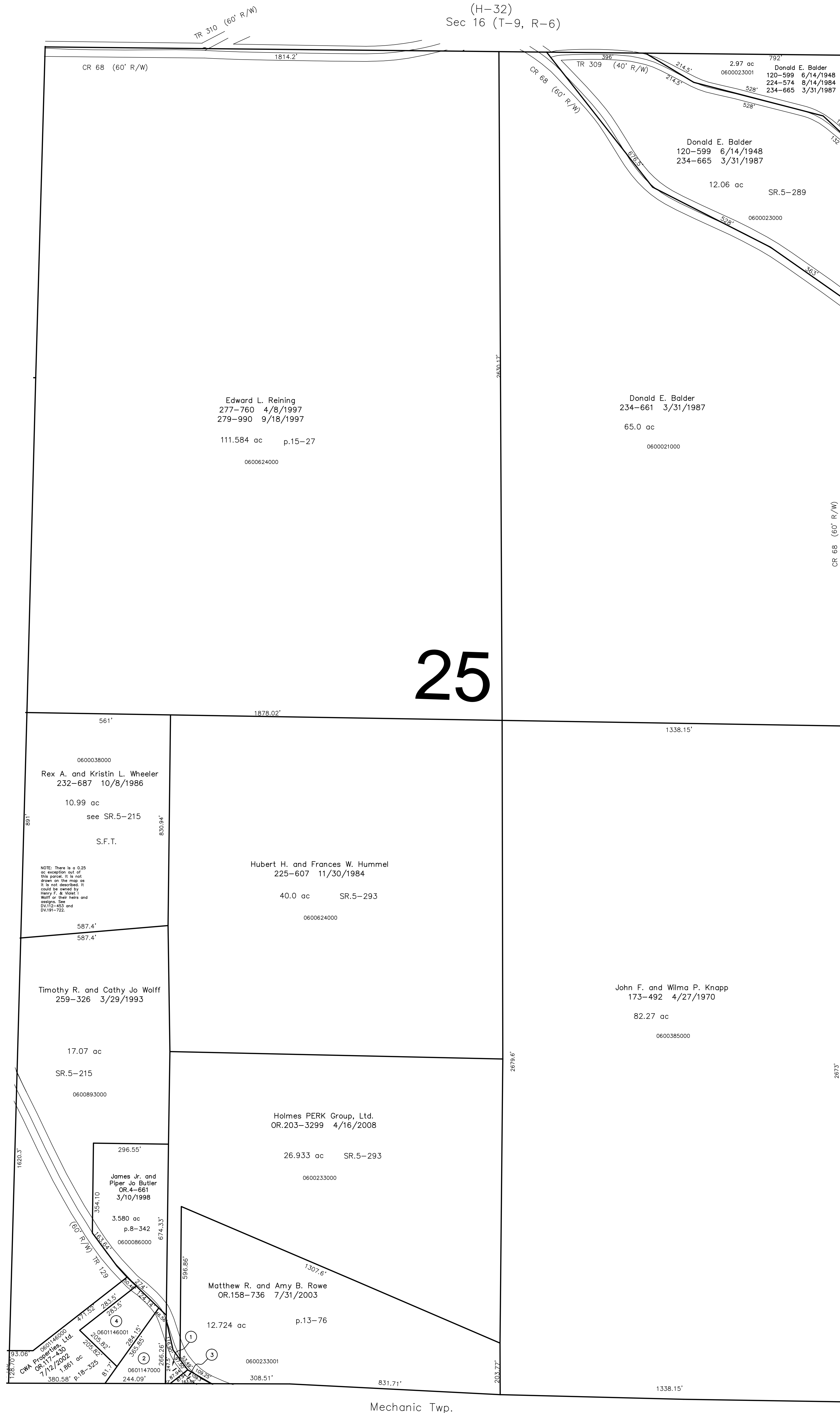


(H-32)
Sec 16 (T-9, R-6)

(H-25)
Sec 21 (T-9, R-7)

Sec. 24 (T-9, R-6)
(H-36)



Mechanic Twp.

0601051000 ① CAROLYN A. POTTS, TRUSTEE
MARGARET E. POTTS
OR.0065-654 1/12/2001
OR.0068-726 3/1/2001
OR.0080-871 7/3/2001
0.186 ac p.17-756

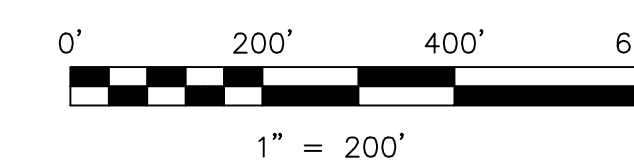
0601147000 ② CAROLYN A. POTTS, TRUSTEE
MARGARET E. POTTS
OR.0065-654 1/12/2001
OR.0068-726 3/1/2001
OR.0080-871 7/3/2001
0.939 ac p.17-756

0601050000 ③ Todd A. and Janet C. Messer
OR.195-1968 3/15/2007
OR.195-1972 3/15/2007
0.103 ac p.19-968

0601146001 ④ CORY S. ALLISON
OR.0118-880 7/29/2002
1.064 ac p.18-325

Last Revision: 4/16/2008

**T-9, R-6, Section 25
HARDY TWP.
HOLMES COUNTY, OHIO**



S.F.T. new survey required
for next transfer

LET IT BE KNOWN, THIS MAP HAS BEEN PREPARED AS A REFERENCE
GUIDE TO PROPERTY OWNERSHIP. WE BELIEVE THIS INFORMATION TO
BE CORRECT AND CURRENT, HOWEVER IT IS NOT INTENDED FOR ANY
LEGAL USE, WHETHER IT BE IN SALES, TRANSFERS, TRADES, LEASES
OF ANY TYPE, ETC., AND DO NOT ACCEPT RESPONSIBILITY FOR
ERRORS OF ANY NATURE OR OMISSIONS CONTAINED HEREIN.

H-31