

Port Washington Road Acres
Plat 2A-164 Platted 2/17/1977

- 0600986000 Green Hills, LLC
OR.185-2699 12/29/2005
5.4 ac p.7-641
- 0600997000 MICHAEL LLOYD NIPPERT, TRUSTEE
MEGAN O'NEIL NIPPERT, TRUSTEE
OR.183-1472 9/21/2005
5.4 ac p.7-646
- 0600998000 HALL MICHAEL E. AND JANE E.
228-710 9/11/1985
6.875 ac p.7-641
- 0601013000 KINGSLAND RICHARD G. AND FLORENCE A.
201-113 2/13/1978
6.875 ac p.7-645
- 0600999000 EDINGER JOSEPH R. AND SUSAN K.
OR.0260-37 7/2/2001
5.429 ac p.7-644
- 0601014000 James R. and Louise B. Lanning
201-622 4/26/1978
OR.192-1187 10/16/2008
5.400 ac p.2A-164 & p.7-648
- 0601018000 EARNEY YVONNE S.
230-681 3/27/1986
5.4 ac p.7-649
- 0601019000 CONWAY JAMES R. AND HOLLY C.
228-562 8/28/1985
5.4 ac p.7-651
- 0601015000 MICHALSKI JERRY
201-378 3/31/1978
OR.0100-328 1/18/2002
5.4 ac p.7-650
- 0601012000 James R. Jr. and Becky J. Chamberlain
OR.190-184 6/29/2006
5.523 ac p.7-662
- 0601011000 HORN, RICKY L.
MAST, LOGAN M.
223-702 5/30/1984
5.15 ac p.7-666
- 0601010000 FRANK STEVEN E. AND RUTH E.
246-428 3/2/1990
5.1 ac p.7-777
- 0601002000 BASERMAN, MARK W.
IRVING, JANE
OR.0019-53 10/28/1998
5.45 ac p.7-654
- 0601003000 ANTHONY JANET L.
OR.0008-206 4/1/1998
5.4 ac p.7-652
- 0601004000 Green Hills, LLC
OR.185-2699 12/29/2005
5.654 ac p.7-658
- 0601020000 TAYLOR CYNTHIA A.
203-669 10/20/1978
229-783 12/19/1985
5.5 ac p.7-660
- 0601008000 TAYLOR CYNTHIA ANN
234-574 3/25/1987
5.4 ac p.7-656
- 0601016000 SCHNEELY MARILYN SUE TRUSTEE
272-40 2/20/1996
5.45 ac p.7-655
- 0601017000 SCHNEELY MARILYN SUE TRUSTEE
272-40 2/20/1996
5.527 ac p.7-776
- 0601009000 BEHASS DONALD D. AND KIMBERLY R.
268-986 6/7/1995
5.657 ac p.7-657

Replat of Tracts 13 & 14
Plat 19-452 Platted 7/14/2005

- 0601000000 Douglas W. and Rebecca J. Shultz
OR.183-552 9/9/2005
(see card: revised Oct. 2006 to match auditor's records)
6.466 ac p.19-452
- 0601001000 Scott G. and Melissa Blitz
OR.183-553 9/9/2005
5.084 ac p.19-452

Replat Tracts 18, 19, 20
Plat 17-755 Platted 1/12/2001

- 0601005000 Dean O. and Quentin J. Larson
OR.173-625 6/18/2004
6.019 ac p.17-755
- 0601006000 Green Hills, LLC
OR.185-2699 12/29/2005
5.258 ac p.17-755
- 0601007000 Green Hills, LLC
OR.185-2699 12/29/2005
5.133 ac p.17-755

Hardy Twp.
Sec. 19

Arlee R. and Evelyn L. Rodhe
243-17 4/20/1989
24.905 ac S.F.T.
0600491000

- 0600355000 HUSTON SHARON A. TRUSTEE
OR.0032-801 6/7/1999
0.83 ac S.F.T.
- 0600752000 LADRACH, MARCUS AND BETH E.
STEMEL, RONDA P. AND
STEMEL, RONDA P. TRUSTEE
260-372 6/18/1993
OR.0068-753 3/1/2001
0.30 ac
- 0600714000 SKELLY JACK T. AND WILMA J. TRUSTEES
OR.0106-197 1/18/2002
0.031 ac p.7-362
- 0600754000 LADRACH, MARCUS AND BETH E.
STEMEL, RUTH M., RONDA K.,
RONDA P. TRUSTEE, AND SAMUEL M.
198-340 5/4/1986
260-376 6/18/1993
OR.0068-753 3/1/2001
OR.0169-825 1/2/2004
1.0 ac

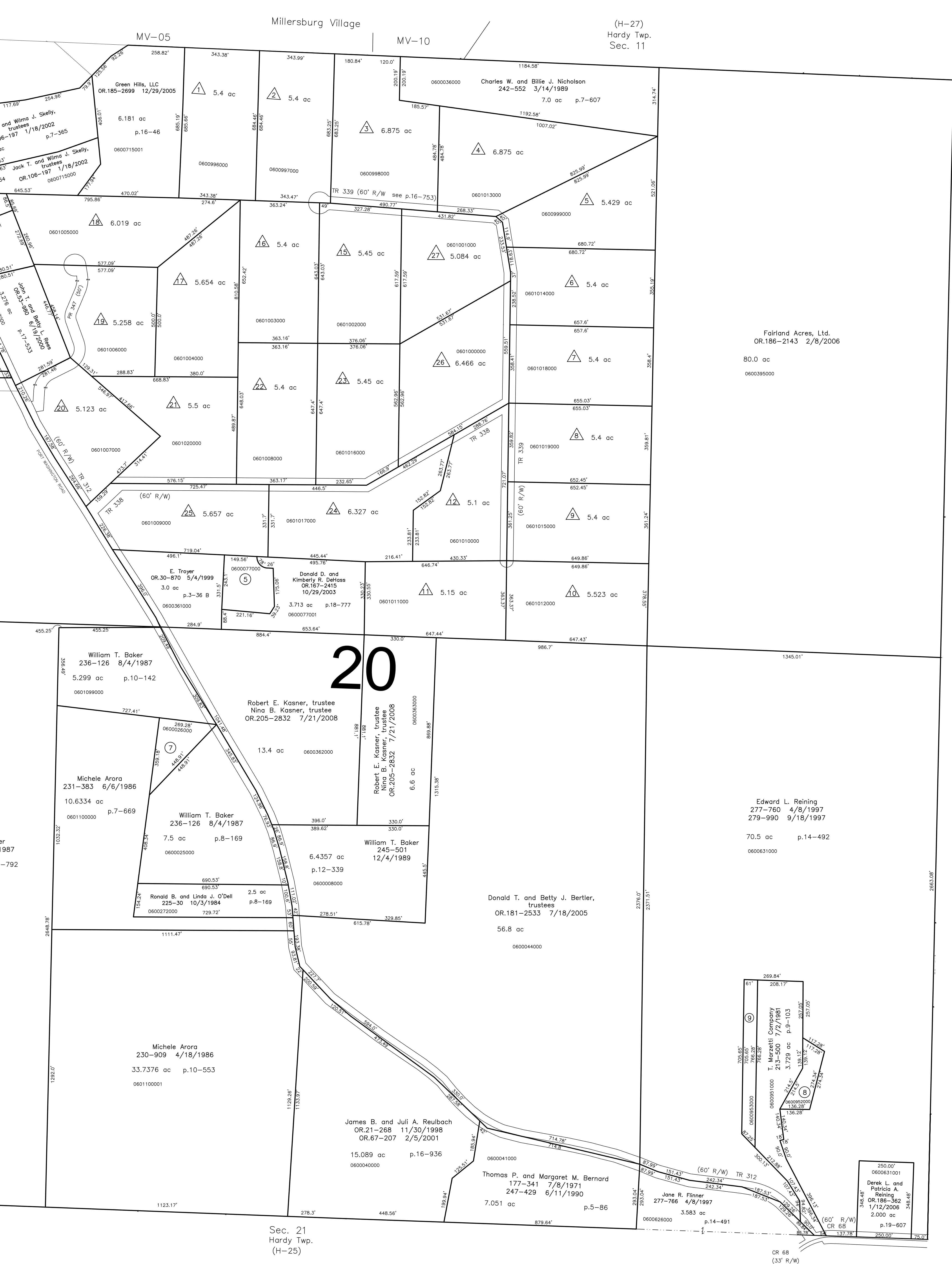
MILLERSBURG
(see Millersburg Maps for detail)

- 060077000 DICHER MARVIN J. AND REGINA F.
OR.0168-728 11/17/2003
1.227 ac p.4-138
- 0600433001 STEMEL, RUTH E. AND RONDA K.,
RONDA P. TRUSTEE, SAMUEL M.,
LADRACH, MARCUS & BETH E.
OR.0053-977 6/19/2001
OR.0068-753 3/1/2001
OR.0169-813 1/2/2004
1.703 ac p.17-533
- 0600184000 WILE VICKI L.
OR.0026-480 2/19/1999
0.828 ac
- 06000753000 STEMEL, RONDA K.,
LADRACH, MARCUS AND BETH E.;
STEMEL, RONDA P. TRUSTEE
OR.0068-753 3/1/2001
2.052 ac
- 0600026000 BAKER WILLIAM T.
236-126 8/4/1987
1.11 ac p.8-845
- 0600952000 T. MARZETTI COMPANY
215-500 7/2/1981
0.699 ac p.9-103
- 0600953000 T. MARZETTI COMPANY
213-500 7/2/1981
1.042 ac p.9-103

MILLERSBURG
(see Millersburg Maps for detail)

- 0601009000 William T. Baker
236-126 8/4/1987
5.299 ac p.10-142
- 0601000000 Michele Arora
231-383 6/6/1986
10.6334 ac p.7-669
- 0601100000 William T. Baker
236-126 8/4/1987
7.5 ac p.8-169
- 0600025000 William T. Baker
245-501
12/4/1989
6.4357 ac p.12-339
- 0600080000 Ronald B. and Linda J. O'Dell
225-30 10/3/1984
2.5 ac p.8-169
- 0600072000 Michele Arora
230-909 4/18/1986
33.7376 ac p.10-553
- 0600040000 James B. and Juli A. Reulbach
OR.21-268 11/30/1998
OR.67-207 2/5/2001
15.089 ac p.16-936
- 0600040000 Thomas P. and Margaret M. Bernard
177-341 7/8/1971
247-429 6/11/1990
7.051 ac p.5-86
- 0600626000 Jane R. Finner
277-766 4/8/1997
3.583 ac p.14-491
- 0600631000 Edward L. Reining
277-760 4/8/1997
279-990 9/18/1997
70.5 ac p.14-492
- 0600631000 Edward L. Reining
277-760 4/8/1997
279-990 9/18/1997
70.5 ac p.14-492
- 0600631000 Edward L. Reining
277-760 4/8/1997
279-990 9/18/1997
70.5 ac p.14-492

- 0600077000 DICHER MARVIN J. AND REGINA F.
OR.0168-728 11/17/2003
1.227 ac p.4-138
- 0600433001 STEMEL, RUTH E. AND RONDA K.,
RONDA P. TRUSTEE, SAMUEL M.,
LADRACH, MARCUS & BETH E.
OR.0053-977 6/19/2001
OR.0068-753 3/1/2001
OR.0169-813 1/2/2004
1.703 ac p.17-533
- 0600184000 WILE VICKI L.
OR.0026-480 2/19/1999
0.828 ac
- 06000753000 STEMEL, RONDA K.,
LADRACH, MARCUS AND BETH E.;
STEMEL, RONDA P. TRUSTEE
OR.0068-753 3/1/2001
2.052 ac
- 0600026000 BAKER WILLIAM T.
236-126 8/4/1987
1.11 ac p.8-845
- 0600952000 T. MARZETTI COMPANY
215-500 7/2/1981
0.699 ac p.9-103
- 0600953000 T. MARZETTI COMPANY
213-500 7/2/1981
1.042 ac p.9-103



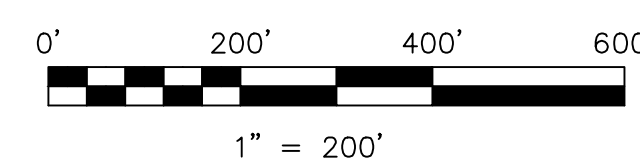
- 0600355000 HUSTON SHARON A. TRUSTEE
OR.0032-801 6/7/1999
0.83 ac S.F.T.
- 0600752000 LADRACH, MARCUS AND BETH E.
STEMEL, RONDA P. AND
STEMEL, RONDA P. TRUSTEE
260-372 6/18/1993
OR.0068-753 3/1/2001
0.30 ac
- 0600714000 SKELLY JACK T. AND WILMA J. TRUSTEES
OR.0106-197 1/18/2002
0.031 ac p.7-362
- 0600754000 LADRACH, MARCUS AND BETH E.
STEMEL, RUTH M., RONDA K.,
RONDA P. TRUSTEE, AND SAMUEL M.
198-340 5/4/1986
260-376 6/18/1993
OR.0068-753 3/1/2001
OR.0169-825 1/2/2004
1.0 ac

Sec. 21
Hardy Twp.
(H-25)

Sec. 16
Hardy Twp.
(H-32)

Last revision: 7/21/2008

T-9, R-7, Section 20
HARDY TWP.
HOLMES COUNTY, OHIO



LET IT BE KNOWN, THIS MAP HAS BEEN PREPARED AS A REFERENCE GUIDE TO PROPERTY OWNERSHIP. WE BELIEVE THIS INFORMATION TO BE CORRECT AND CURRENT, HOWEVER IT IS NOT INTENDED FOR ANY LEGAL USE, WHETHER IT BE IN SALES, TRANSFERS, TRADES, LEASES OF ANY TYPE, ETC., AND DO NOT ACCEPT RESPONSIBILITY FOR ERRORS OF ANY NATURE OR OMISSIONS CONTAINED HEREIN.

S.F.T. new survey required for next transfer

H-26