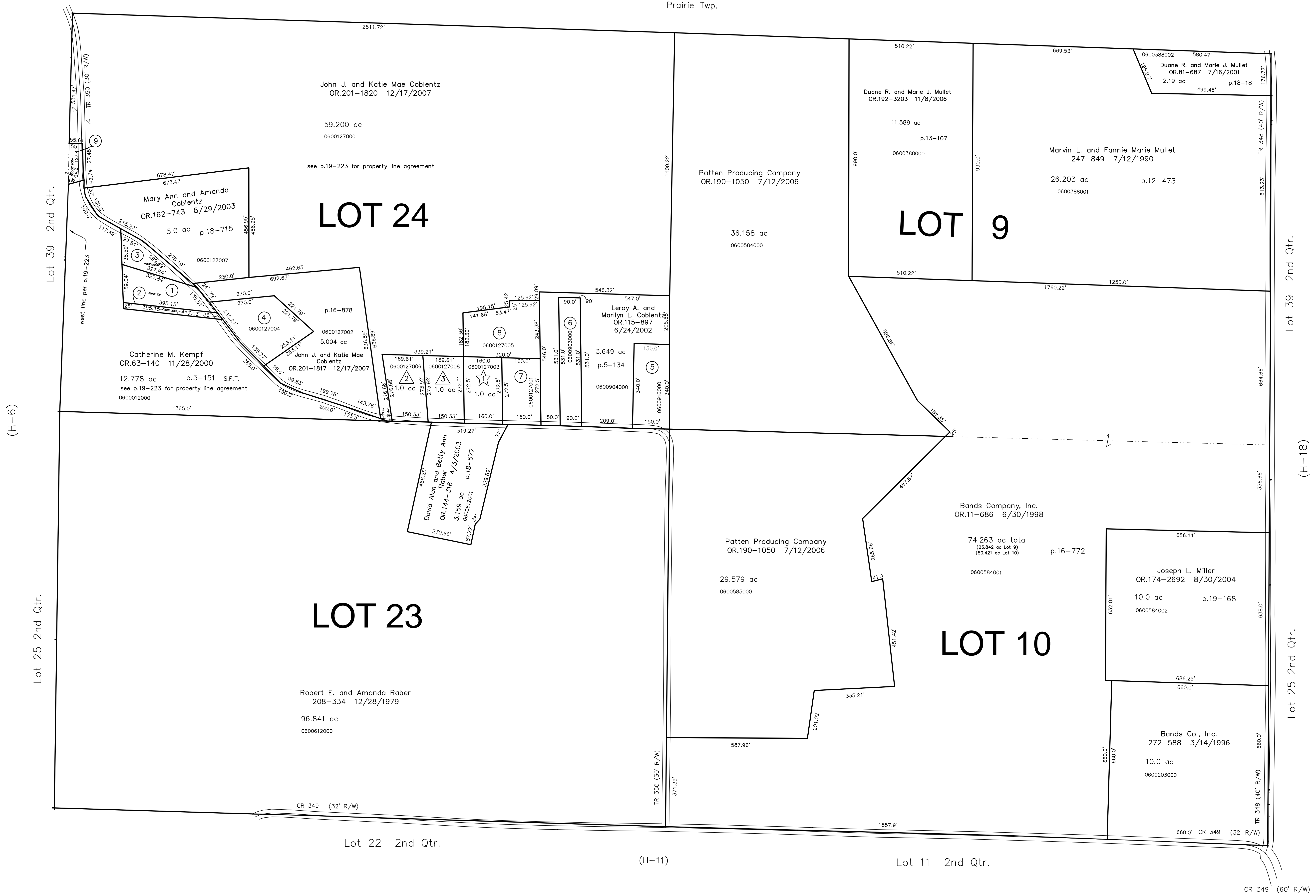


Prairie Twp.



- 0600012001 ① Allen J. Hostetler  
OR.185-2166 12/21/2005  
1.0 ac p.14-465
- 0600012002 ② Allen J. Hostetler  
OR.185-2166 12/21/2005  
0.238 ac p.14-840
- 0600012003 ③ Allen J. Hostetler  
OR.185-2166 12/21/2005  
0.362 ac p.14-840
- 0600127004 ④ LORRE L. POST  
OR.0174-835 8/4/2004  
1.567 ac p.16-97
- 0600916000 ⑤ MARVIN R. AND SARA ANN MILLER  
233-514 12/4/1986  
1.171 ac p.8-527
- 0600903000 ⑥ LEROY A. AND MARILYN L. COBLENTZ  
OR.0115-897 6/24/2002  
1.1 ac p.3-68 B
- 0600127001 ⑦ PAUL DEAN AND DIANE MCCLUGGAGE  
233-128 10/16/1991  
1.0 ac p.10-951
- 0600127005 ⑧ LEROY A. AND MARILYN L. COBLENTZ  
OR.0115-897 6/24/2002  
1.375 ac p.16-214
- 0600012004 ⑨ ATLEE M. AND FANNIE MAE TROYER  
OR.0177-2163 1/13/2005  
3.363 ac total p.19-287  
(0.222 ac Lot 24 + 3.141 ac Lot 39)

★ L & R Subdivision No.1  
Plot 17-318 Platted 11/29/1999

0600127003 ★ LISA E. MORRIS  
OR.0043-238 12/3/1999  
1.0 ac

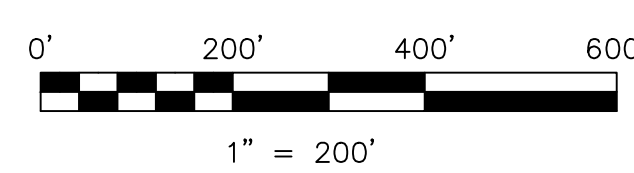
△ Riley Allotment No.1, Replat of Lot 1  
Plot 19-595 Platted 1/4/2006

0600127008 △ Ronald G. Reed  
OR.208-2690 9/22/2008  
1.0 ac p.19-595

0600127008 △ Ronald G. and Melissa Reed  
OR.201-1592 12/11/2007  
1.0 ac p.19-595

Last Revision: 9/22/2008

**T-9, R-7, 2nd Qtr.  
LOTS 9, 10, 23, 24  
HARDY TWP.  
HOLMES COUNTY, OHIO**



S.F.T. new survey required  
for next transfer

LET IT BE KNOWN, THIS MAP HAS BEEN PREPARED AS A REFERENCE GUIDE TO PROPERTY OWNERSHIP. WE BELIEVE THIS INFORMATION TO BE CORRECT AND CURRENT. HOWEVER IT IS NOT INTENDED FOR ANY LEGAL USE, WHETHER IT BE IN SALES, TRANSFERS, TRUSTS, LEASES OF ANY TYPE, ETC., AND DO NOT ACCEPT RESPONSIBILITY FOR ERRORS OF ANY NATURE OR OMISSIONS CONTAINED HEREIN.

# H-12