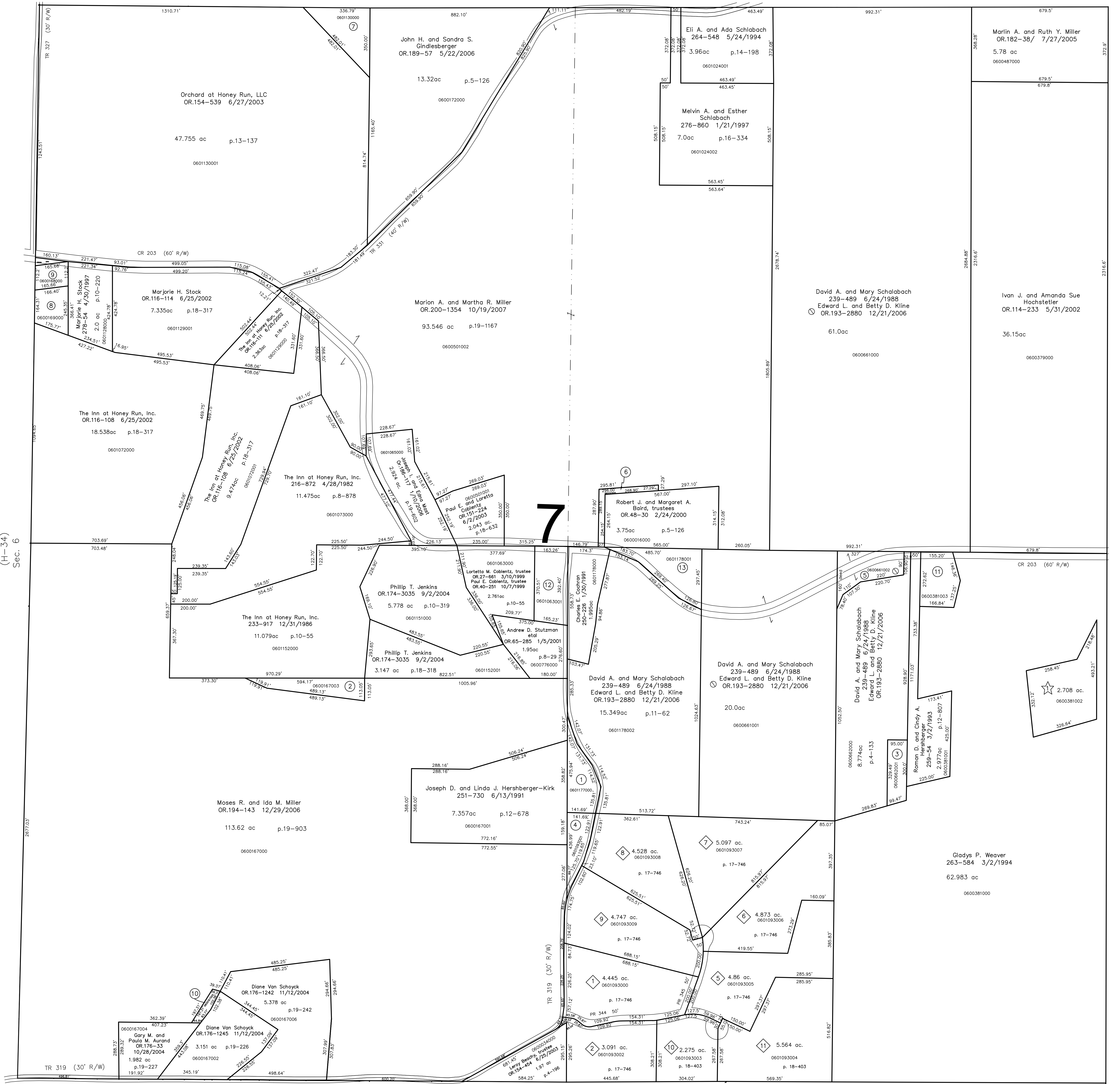


- Hickory Spring Subdivision**
Plat 18-702 Platted 8/12/2003
- 0600381002 **Darryl L. and Jennifer G. Kurtz**
OR.161-97 8/18/2003
2.708 ac p.18-702
- Honey Run Village**
Plat 17-746 Platted 12/29/2000
- 0601093000 **Norman E. and Candace L. Phillips**
OR.163-151 9/3/2003
4.445 ac p.17-746
- 0601093002 **Wendy R. and Leah F. Swartzentruber**
OR.191-1462 8/31/2006
3.091 ac p.17-746
- 0601093005 **Marc A. and Corinne M. Lehman**
OR.199-643 8/22/2007
4.86 ac p.17-746
- 0601093006 **James B. and Virginia L. Norton**
OR.174-897 5/15/2001
4.873 ac p.17-746
- 0601093007 **James B. and Virginia L. Norton**
OR.191-2474 9/18/2006
4.528 ac p.17-746
- 0601093008 **Joshua E. and Susan M. Crilow**
OR.191-2474 9/18/2006
4.528 ac p.17-746
- 0601093009 **Joshua Miller**
OR.191-1665 9/1/2006
4.747 ac p.17-746
- Replat of Lots 3 & 4**
Plat 18-403 Platted 10/8/2002
- 0601093003 **Derek C. Miller**
Lori B. Pendlebury
OR.197-2268 6/12/2007
2.275 ac p.18-403
- 0601093004 **Marjorie H. Stock**
219-724 3/3/1983
5.564 ac p.18-403



(H-34)
Sec. 6

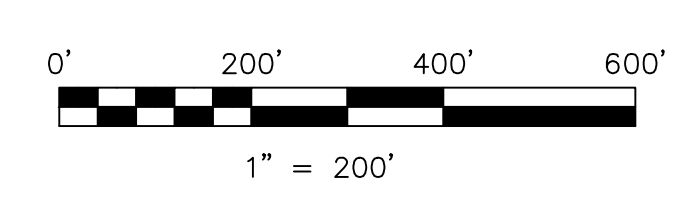
Berlin Twp.

- 0601177000 **Joseph D. and Linda J. Hershberger-Kirk**
227-715 6/14/1985
1.106 ac p.10-425
- 0600167003 **The Inn at Honey Run, Inc.**
263-857 3/24/1994
0.973 ac p.14-471
- 0600662001 **Roman D. and Cindy A. Hershberger**
OR.40-24 10/5/1999
0.686 ac p.17-261
- 0601093001 **The Inn Farms, Inc.**
OR.64-90 12/13/2000
0.808 ac p.17-723
- 0600661002 **David A. and Mary Schlabach**
239-489 6/24/1988
Edward L. and Betty D. Kline
OR.193-2880 12/21/2006
1.0 ac
- 0601023000 **Robert J. and Margaret A. Baird, trustees**
OR.48-33 2/24/2000
0.349 ac p.8-859

- 0601130000 **John H. and Sandra S. Gindlesberger**
OR.189-57 5/22/2006
1.353 ac p.13-137
- 0600169000 **Jeffery J. and Viola S. Allison**
OR.39-741 10/1/1999
0.776 ac p.8-157
- 0600168000 **Jeffery J. and Viola S. Allison**
OR.39-741 10/1/1999
0.46 ac
- 0600167005 **Diane Van Schoyck**
OR.176-1242 11/12/2004
0.184 ac p.19-242
- 0600381003 **Eugene D. and Joani M. Weaver**
OR.179-1013 4/5/2005
1.122 ac p.19-356

- 0601063001 **Loretta M. Coblenz, trustee**
OR.27-654 3/10/1999
Paul E. Coblenz, trustee
OR.40-253 10/7/1999
1.432 ac p.17-23
- 0601178001 **Robert J. and Margaret A. Baird, trustees**
OR.48-36 2/24/2000
1.55 ac p.10-518

S.F.T. new survey required for next transfer



LET IT BE KNOWN, THIS MAP HAS BEEN PREPARED AS A REFERENCE GUIDE TO PROPERTY OWNERSHIP. WE BELIEVE THIS INFORMATION TO BE CORRECT AND CURRENT, HOWEVER IT IS NOT INTENDED FOR ANY LEGAL USE, WHETHER IT BE IN SALES, TRANSFERS, TRACES, LEASES OF ANY TYPE, ETC., AND DO NOT ACCEPT RESPONSIBILITY FOR ERRORS OF ANY NATURE OR OMISSIONS CONTAINED HEREIN.

Last Revision: 10/19/2007

**T-9, R-6, Section 7
HARDY TWP.
HOLMES COUNTY, OHIO**