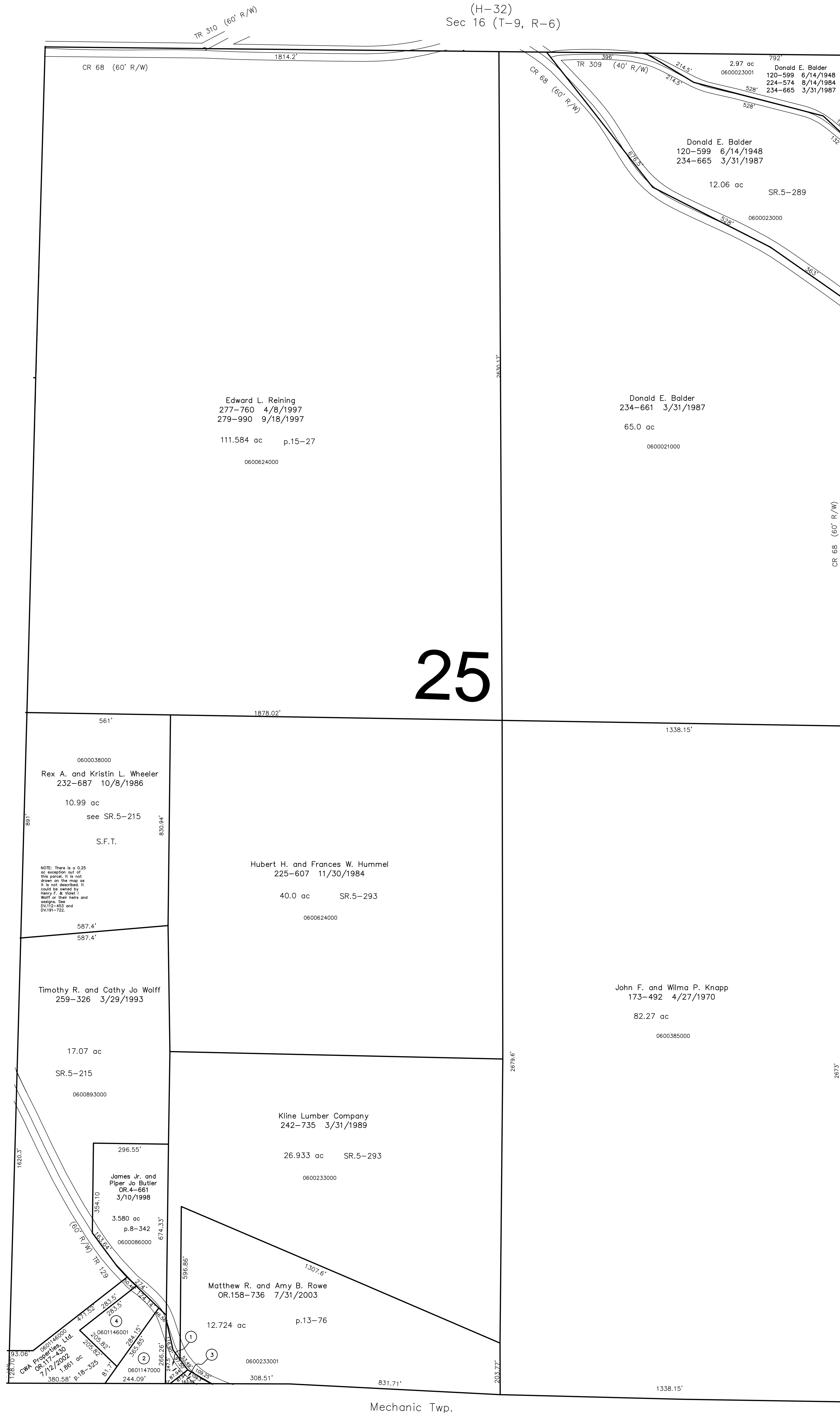


(H-32)  
Sec 16 (T-9, R-6)

(H-25)  
Sec 21 (T-9, R-7)

Sec. 24 (T-9, R-6)  
(H-36)



Mechanic Twp.

0601051000 ① CAROLYN A. POTTS, TRUSTEE  
MARGARET E. POTTS  
OR.0065-654 1/12/2001  
OR.0068-726 3/1/2001  
OR.0080-871 7/3/2001  
0.186 ac p.17-756

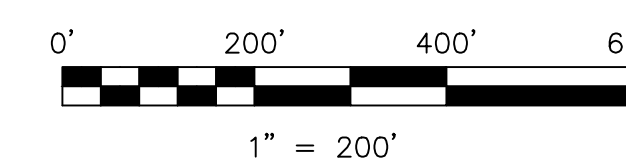
0601147000 ② CAROLYN A. POTTS, TRUSTEE  
MARGARET E. POTTS  
OR.0065-654 1/12/2001  
OR.0068-726 3/1/2001  
OR.0080-871 7/3/2001  
0.939 ac p.17-756


0601050000 ③ Todd A. and Janet C. Messer  
OR.195-1968 3/15/2007  
OR.195-1972 3/15/2007  
0.103 ac p.19-968

0601146001 ④ CORY S. ALLISON  
OR.0118-880 7/29/2002  
1.064 ac p.18-325

Last Revision: 3-15-2007

**T-9, R-6, Section 25  
HARDY TWP.  
HOLMES COUNTY, OHIO**



S.F.T.  new survey required  
for next transfer

LET IT BE KNOWN, THIS MAP HAS BEEN PREPARED AS A REFERENCE  
GUIDE TO PROPERTY OWNERSHIP. WE BELIEVE THIS INFORMATION TO  
BE CORRECT AND CURRENT, HOWEVER IT IS NOT INTENDED FOR ANY  
LEGAL USE, WHETHER IT BE IN SALES, TRANSFERS, TRADES, LEASES  
OF ANY TYPE, ETC., AND DO NOT ACCEPT RESPONSIBILITY FOR  
ERRORS OF ANY NATURE OR OMISSIONS CONTAINED HEREIN.

# H-31