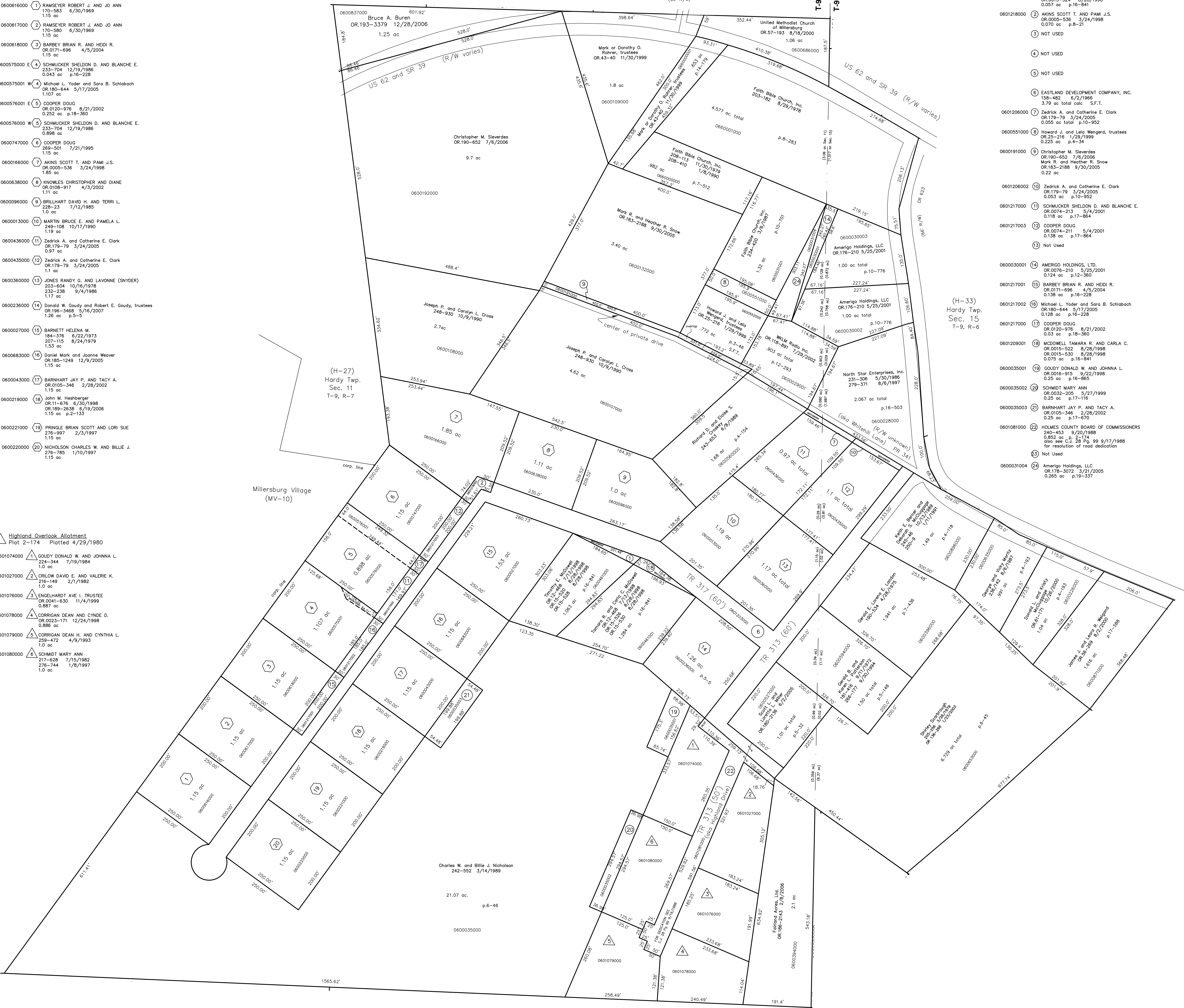


**Hilltop Acres Allotment**  
Plot 2-133 Platted 3/12/1969

- 0600616000 ① RAMSEYER ROBERT J. AND JO ANN  
170-583 6/30/1969  
1.15 ac
- 0600617000 ② RAMSEYER ROBERT J. AND JO ANN  
170-580 6/30/1969  
1.15 ac
- 0600618000 ③ BARBEY BRIAN R. AND HEDI R.  
OR.0171-696 4/5/2004  
1.15 ac
- 0600575000 E ④ SCHMUCKER SHELDON D. AND BLANCHE E.  
233-704 12/19/1986  
0.043 ac p.16-228
- 0600575001 W ④ Michael L. Yoder and Sara B. Schlabach  
OR.180-644 5/17/2005  
1.107 ac
- 0600576001 E ⑤ COOPER DOUG  
OR.0120-976 8/21/2002  
0.252 ac p.18-360
- 0600576000 W ⑤ SCHMUCKER SHELDON D. AND BLANCHE E.  
233-704 12/19/1986  
0.898 ac
- 0600747000 ⑥ COOPER DOUG  
269-501 7/21/1995  
1.15 ac
- 0600166000 ⑦ AKINS SCOTT T. AND PAMI J.S.  
OR.0005-536 3/24/1998  
1.85 ac
- 0600638000 ⑧ KNOWLES CHRISTOPHER AND DIANE  
OR.0108-917 4/3/2002  
1.11 ac
- 0600096000 ⑨ BRILLHART DAVID H. AND TERRI L.  
228-23 7/12/1985  
1.0 ac
- 0600013000 ⑩ MARTIN BRUCE E. AND PAMELA L.  
249-108 10/17/1990  
1.19 ac
- 0600436000 ⑪ Zedrick A. and Catherine E. Clark  
OR.179-79 3/24/2005  
0.97 ac
- 0600435000 ⑫ Zedrick A. and Catherine E. Clark  
OR.179-79 3/24/2005  
1.1 ac
- 0600360000 ⑬ JONES BARRY C. AND LAVONNE (SNYDER)  
804-804 10/16/1978  
232-238 9/4/1986  
1.17 ac
- 0600236000 ⑭ Donald W. Goudy and Robert E. Goudy, trustees  
OR.185-3469 5/18/2007  
1.26 ac p.5-5
- 0600027000 ⑮ BARNETT HELENA M.  
184-378 6/22/1973  
207-115 8/24/1979  
1.53 ac
- 0600683000 ⑯ Daniel Mark and Joanne Weaver  
OR.185-1249 12/9/2005  
1.15 ac
- 0600043000 ⑰ BARNHART JAY P. AND TACY A.  
OR.0105-346 2/28/2002  
1.15 ac
- 0600219000 ⑱ John M. Heshberger  
OR.11-676 6/30/1998  
OR.189-2638 5/18/2006  
1.15 ac p.2-133
- 0600221000 ⑲ PRINGLE BRIAN SCOTT AND LORI SUE  
276-997 2/3/1997  
1.15 ac
- 0600220000 ⑳ NICHOLSON CHARLES W. AND BILLIE J.  
276-785 1/10/1997  
1.15 ac

**Highland Overlook Allotment**  
Plot 2-174 Platted 4/29/1980

- 0601074000 ① GOUDEY DONALD W. AND JOHNNA L.  
224-344 7/19/1984  
1.0 ac
- 0601027000 ② CRLOW DAVID E. AND VALERIE K.  
216-149 2/1/1982  
1.0 ac
- 0601076000 ③ ENGELHARDT AVE L. TRUSTEE  
OR.0041-630 11/4/1999  
0.887 ac
- 0601078000 ④ CORRIGAN DEAN AND CYNDE D.  
OR.0223-171 12/24/1998  
0.886 ac
- 0601079000 ⑤ CORRIGAN DEAN H. AND CYNTHIA L.  
259-472 4/9/1993  
1.0 ac
- 0601080000 ⑥ SCHMIDT MARY ANN  
217-629 7/15/1982  
276-744 1/8/1997  
1.0 ac

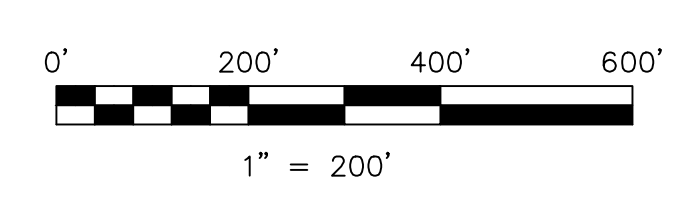


- 0601209000 ① MCDOWELL TIMOTHY E.  
OR.0015-524 8/28/1998  
0.057 ac p.16-841
- 0601218000 ② AKINS SCOTT T. AND PAMI J.S.  
OR.0005-536 3/24/1998  
0.070 ac p.8-21
- ③ NOT USED
- ④ NOT USED
- ⑤ NOT USED
- ⑥ EASTLAND DEVELOPMENT COMPANY, INC.  
158-482 6/2/1966  
3.79 ac total calc S.F.T.
- 0601206000 ⑦ Zedrick A. and Catherine E. Clark  
OR.179-79 3/24/2005  
0.055 ac total p.10-952
- 0600551000 ⑧ Howard J. and Lela Wengerd, trustees  
OR.25-216 1/29/1999  
0.225 ac p.4-34
- 0600191000 ⑨ Christopher M. Sieverdes  
OR.190-852 7/8/2006  
Mark R. and Heather R. Snow  
OR.183-2188 9/30/2005  
0.22 ac
- 0601206002 ⑩ Zedrick A. and Catherine E. Clark  
OR.179-79 3/24/2005  
0.053 ac p.10-952
- 0601217000 ⑪ SCHMUCKER SHELDON D. AND BLANCHE E.  
OR.0074-213 5/4/2001  
0.118 ac p.17-864
- 0601217003 ⑫ COOPER DOUG  
OR.0074-211 5/4/2001  
0.138 ac p.17-864
- ⑬ Not Used
- 0600030001 ⑭ AMERIGO HOLDINGS, LTD.  
OR.0076-210 5/25/2001  
0.124 ac p.12-360
- 0601217001 ⑮ BARBEY BRIAN R. AND HEDI R.  
OR.0171-696 4/5/2004  
0.138 ac p.16-228
- 0601217002 ⑯ Michael L. Yoder and Sara B. Schlabach  
OR.180-644 5/17/2005  
0.128 ac p.16-228
- 0601217000 ⑰ COOPER DOUG  
OR.0120-976 8/21/2002  
0.03 ac p.18-360
- 0601209001 ⑱ MCDOWELL TAMARA R. AND CARLA C.  
OR.0015-522 8/28/1998  
OR.0015-530 8/28/1998  
0.078 ac p.16-841
- 0600035001 ⑲ GOUDEY DONALD W. AND JOHNNA L.  
OR.0016-915 9/22/1998  
0.25 ac p.16-865
- 0600035002 ⑳ SCHMIDT MARY ANN  
OR.0032-205 5/27/1999  
0.25 ac p.17-116
- 0600035003 ㉑ BARNHART JAY P. AND TACY A.  
OR.0105-346 2/28/2002  
0.25 ac p.17-670
- 0601081000 ㉒ HOLMES COUNTY BOARD OF COMMISSIONERS  
240-453 9/20/1988  
0.852 ac p. 2-174  
285 see C-1, 58 pp 99 9/17/1988  
for resolution of road dedication
- ㉓ Not Used
- 0600031004 ㉔ Amerigo Holdings, LLC  
OR.178-3072 3/21/2005  
0.265 ac p.19-337

Last revision: 5/16/2007

**Portions of**  
**T-9, R-7, Section 11**  
**T-9, R-6, Section 15**  
**HARDY TWP.**  
**HOLMES COUNTY, OHIO**

**H-27A**



S.F.T. new survey required for next transfer

LET IT BE KNOWN, THIS MAP HAS BEEN PREPARED AS A REFERENCE GUIDE TO PROPERTY OWNERSHIP. WE BELIEVE THIS INFORMATION TO BE CORRECT AND CURRENT, HOWEVER IT IS NOT INTENDED FOR ANY LEGAL USE, WHETHER IT BE IN SALES, TRANSFERS, TRADES, LEASES OF ANY TYPE, ETC., AND DO NOT ACCEPT RESPONSIBILITY FOR ERRORS OF ANY NATURE OR OMISSIONS CONTAINED HEREIN.